

国际 TELE SATELLITE 杂志 & BROADBAND

国际卫星电视 和 宽带

NTS 330

发烧友报道
访问南非的
“卫星爸爸”



TELE SATELLITE & BROADBAND
AWARD
10-11/2007

测试报告
地平线 HDSM USB 加强型



傻瓜都会用的天线仪器

测试报告
Technisat DigitSim S2



迷你机型

测试报告
九洲DVS-2018BS
专业接收机



并非家用机，而是非常坚固耐用的专业型

在第8页
链接
中文
译稿

带CI的高清电视 电脑用接收机

测试报告
TechnoTrend
S2-3650CI



9 770931 173082 12



More real than real world

TOPFIELD High Definition Digital Receiver brings you higher level of video standard



TF7700HSCI

HIGH DEFINITION Digital Satellite Receiver
2 common Interfaces for CONAX, CRYPTOWORKS,
IRDETO, SECA & VIACCESS

MPEG-2 / MPEG-4 / H.264 HD, SD Digital Video Decoding
HDMI Digital Video & Audio Output
1080i, 720P, 576P, 576i Video Out
Firmware upgrade by Over-The-Air & USB
VFD Display for service information

Topfield Co., Ltd.

Hanseong Bldg, 246-3, Seohyun-Dong, Bundang-Ku, seongnam, GyeongGi-Do, 463-824, Korea Tel: +82 31 778 0800 Fax: +82 31 778 0801, 0802
www.i-topfield.com Email: inquiry@i-topfield.com

Topfield Europe GmbH.

Lichtstr. 43H, D-50825 Cologne Germany www.topfield-europe.com Email: info@topfield-europe.com

TOPFIELD®
LEADER OF MULTIMEDIA HOME

该CD为《国际卫星电视》杂志独家版权所有

《国际卫星电视》杂志+CD-ROM

SatcoDX 《卫星的世界》 CD-ROM 3.12版

注意：欲从较早的3.11版更新到3.12版，请安装该《卫星的世界》CD



地址：
国际卫星电视
1234邮箱
85766 慕尼黑 Ufg
德国 欧盟

主编：
亚历山大.维思
alex@TELE-satellite.com

出版：
TELE-satellite Medien GmbH
德国/欧盟

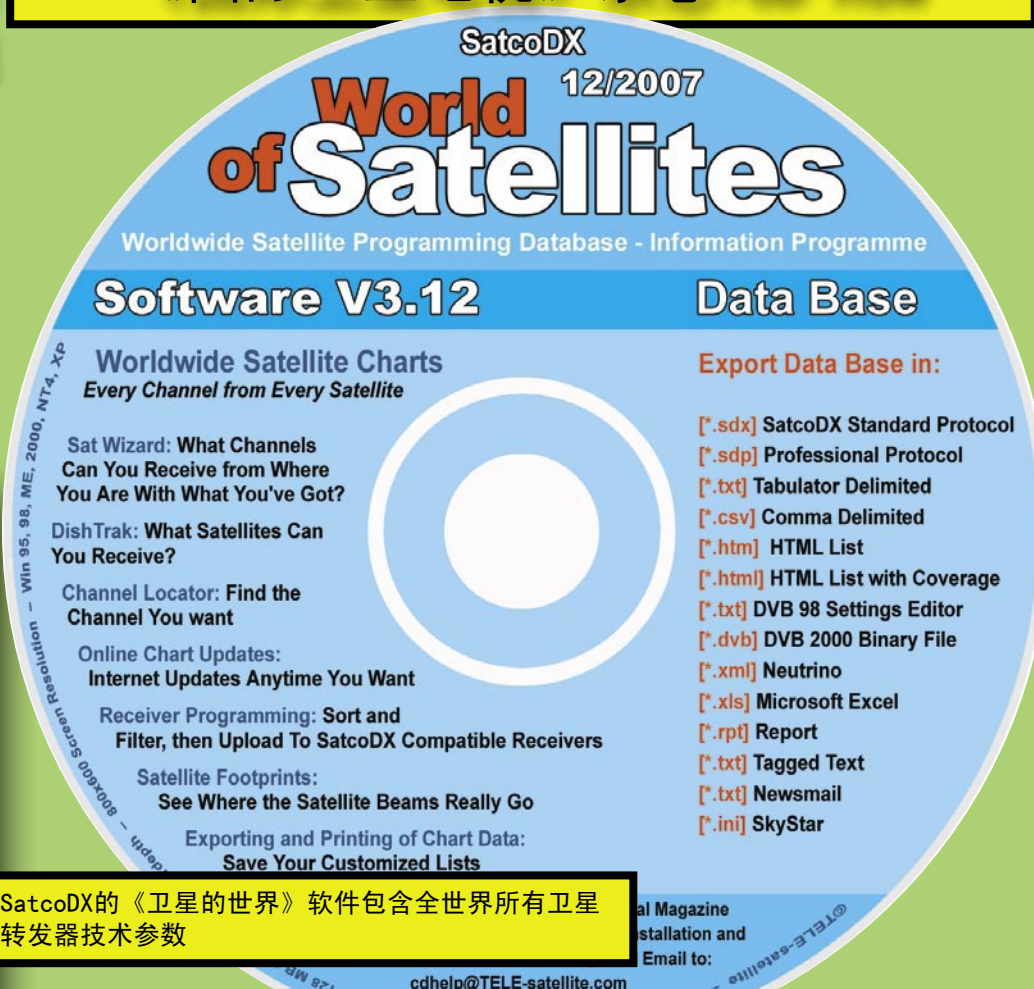
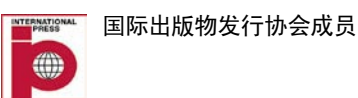
设计/制作
国际卫星电视匈牙利公司
耐曼提.巴拿.阿泰拉
匈牙利/欧盟

国际广告
亚历山大.维思
alex@TELE-satellite.com

城市广告
莫妮卡.萨博
m.szabo@TELE-satellite.com

订阅服务
罗世刚德容贸易商行
001-390信箱
518001 深圳
中国
电话/传真：+86-755-82173350

版权所有@
国际卫星电视 2007
www.TELE-satellite.com/man



SatcoDX的《卫星的世界》软件包含全世界所有卫星转发器技术参数

全球所有卫星频道完整数据列表

自动显示所有可接收的卫星频道

自动载入卫星频道数据到与SatcoDX兼容的接收机中

通过互联网连接主服务器及备份服务器进行频道数据库更新

以HTML格式打印包含卫星场强图的频道列表

以多种格式保存网页数据

- SatcoDX Industry Standard Protocol [* .sdx]
- SatcoDX Industry Standard Protocol Professional [* .sdp]
- SatcoDX Tabulator Delimited Text File [* .txt]
- SatcoDX Comma Separated Text File [* .csv]
- HTML (SatcoDX Style) [* .htm]
- HTML List (With Coverage Images) [* .html]
- HTML List (Without Coverage Images) [* .html]
- DVB '98 Settings Editor Text File [* .txt]
- DVB2000 Binary File [* .dwb]
- Neutrino XML files [* .xml]
- Microsoft Excel File [* .xls]
- Report [* .rpt]
- Tagged Text File [* .txt]
- Newsmail [* .txt]
- SkyStar INI files [* .ini]

TELE-satellite Online in All Languages

www.TELE-satellite.com/

The World's Largest Satellite Magazine



www.TELE-satellite.com/TELE-satellite-1011/feature/

(article on page 18)

www.TELE-satellite.com/TELE-satellite-1011/eycos/

(article on page 40)



www.TELE-satellite.com/TELE-satellite-1011/techartrend/

(article on page 22)

www.TELE-satellite.com/TELE-satellite-1011/spaun/

(article on page 44)

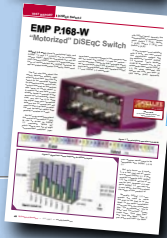


www.TELE-satellite.com/TELE-satellite-1011/jiuzhou/

(article on page 26)

www.TELE-satellite.com/TELE-satellite-1011/emp/

(article on page 48)



www.TELE-satellite.com/TELE-satellite-1011/technisat/

(article on page 30)

www.TELE-satellite.com/TELE-satellite-1011/doebis/

(article on page 72)



www.TELE-satellite.com/TELE-satellite-1011/techartrendHDMI/

(article on page 34)

www.TELE-satellite.com/TELE-satellite-1011/tony/

(article on page 76)



www.TELE-satellite.com/TELE-satellite-1011/horizon/

(article on page 36)

www.TELE-satellite.com/TELE-satellite-1011/grandfather/

(article on page 78)



العربية

Indonesia

Български

Deutsch

English

Español

فارسي

Français

Ελληνικά

Hrvatski

Italiano

Magyar

中文

Nederlands

Polski

Русский

Türkçe

Global Satellite Chart by TELE-satellite

SATCODX
WORLDWIDE

www.handbook.satcodx.com/satcodx.pdf



Satellite Dish & Cable TV Products



INFOSAT

Window to The World TV



TV Signal Level Meter



INFOSAT DSR-9500



INFOSAT i-Move 2006



INFOSAT LMBF E-6011



INFOSAT M860



INFOSAT MNT-750EII



Sat Transmitter 24 mW

INFOSAT Satellite Dish Antenna

- 5.0', 5.5', 6', 7', 7.5' and 10' Fixed & Move
- Aluminum Mesh Dish Antenna
- C/KU Band Reception
- High Accuracy Parabolic Curvature Design

INFOSAT Digital CKU LNBF

- Model. CKU 0001
- Lo: C : 5150 MHz ,
 - KU: 9.75 – 10.6 GHz
 - Switching: DiSEqC 2x1



INFOSAT Signal Level Meter

LM870N, LM870W and LM870 TVR are specially designed and manufactured for CATV system installation and testing. They are a portable instrument, easy to carry with many functions.

46/22 Moo.5, Tiwanon Rd., Banmai, Pakkred, Nonthaburi 11120 Thailand
 Tel.: +662 961 9161-3, +662 961 9996-8 Fax: +662 961 8587 E-mail: niran@infosats.com

www.infosats.com



TECHNOTREND S2-3650CI
HDTV PC Receiver22



JIUZHOU DVS-2018BS
专业接收机26



TECHNISAT DIGITSIM S2
卫星接收机30



TECHNOTREND TT-MICRO S320
通过 HDMI 传输视频34



HORIZON HDSM USB PLUS
“傻瓜都会使用它” r36



EYCOS S80.12 HD
首款高清卫星电视 PVR 接收机40



SPAUN SMS 91609 NF
复合开关44

EMP P.168-W
DiSEqC Switch 48

Media:
Satellite & Broadband News14

Feature:
多用途的 网络接口 18

SatcoDX Global Satellite Chart52

Company report:
卫星器材批发商多比斯72

Satellite DX:
Tony Di Rienzo76

Enthusiast Report:
卫星 “爷爷”78

亲爱的读者们



电视观众分为两种类型。一种是属于喜欢浏览频道的人,也包括我在内。他们把电视打开,不断把一个频道转换为另外一个频道,直到他们找到有趣的东西。如果他们找不到感兴趣的东西,他们就继续浏览下去。他们看电视没有计划也并不真的想停留在某一特别的频道上。

还有另一群人: 他们坐下来认真研究电视节目指南或者 EPG,并选定一个特定的节目。他们捧着花生、薯条和啤酒,从头到尾观看一个节目。

对于卫星接收而言,电视观众的这种差异有何借鉴呢? 这种差异对于接收机市场产生着重要的作用。当喜爱浏览频道的这群人对 PVR 机顶盒没有需求的时候,另外一群人则不同: PVR 技术已经找到了归宿。这些观众并没有捧着电视指南在电视之前坐了原来那么多的时间,而是增加 15 分钟!

原因很简单:他们打开 PVR 开始观看节目,15 分钟之后当他们坐在沙发上的时候,他们只使用向前的按键。这个群体将 PVR 作为商业广告的一个杀手。在广告开始时,他们就快速地越过它。

现在,我们来看这两个群体的差异对卫星业的主要影响。只有当有 PVR 的高清电视接收机诞生的时候,期待已久的高清电视繁荣才会出现。我们距离那天已

经不太远了,首批高清电视 PVR 接收机将会很快上市。迄今为止还很少有如此巨量的数据存储器来与高清电视连接。制造厂家和经销商甚至不知道哪一种大小的硬盘适合他们。这是一个重要的成本因素。

所以,有越来越多接收机,甚至包括 DVB-S 型号,都具有外接硬盘和 USB 接口。这样,制造厂家和经销商不再需要选择硬盘了,这个问题交给用户了。

因此,在这次远足之后再探究这两群电视观众的心理,我们现在终于知道了我们如此热切地期待高清电视的繁荣只是基于这样一个事实:内建 PVR 的高清电视接收机现在在市场上出现了。只是现在高清电视才开始逐渐多起来,因为对于大部分电视观众来说现在有了购买一台高清电视接收机的理由,它内建了 PVR。

致敬

亚历山大·维思

附注: 我本月喜爱的广播电台是来自意大利的 Zainet 电台(13° E, Hotbird, 11.200V 27500), 一个经常播放与众不同音乐的学生电台。

广告

ABCOM	20
ARION	11
AZURE SHINE	47
CABSAT	16
CSTB-2008	63
DOEBIS	12,13
DVB SHOP	31
EEBC 2007	51
EMP	77
EURASIA	49
EYCOS	17

FORTECSTAR	45
HORIZON	23
INFOSAT	9
INVACOM	73
JIUZHOU	84
JONSA	21
KATHREIN	55
MOTECK	59
MTI	29
RESYS	83
SADOUN	80

SEATEL	41
SMARTWI	76
SPAUN	53
STAB	39
TAITRONICS	71
TECHNISAT	27
TECHNOMATE	43
TELE-satellite CITY	61
TERRA	15
TOPFIELD	2

Art Shopping for Spring Collection

HDMI & Multi - Room



AF-9400 PVR HDMI

HD STB



AF-8000HDCI

PVR



Satellite, Terrestrial, Cable PVR

Meet New ARION high-tech digital media collections Multi - Room PVR, Terrestrial & Cable PVR

ARION
TECHNOLOGY
Advanced Standard for PVR
www.arion.co.kr/global

NEW TECHNOLOGIES – NOW ON STOCK

We are official **HUMAX** distributor

HUMAX

PR-HD 1000 / PR-HD 1000 C



HDTV for satellite and cable reception

- Suitable for Premiere and Premiere HD
- MPEG4 / MPEG2 Technology
- opt. out for Dolby Surround Sound
- Nagravision embedded
- HDMI (with HDCP)
- 2 x CI Slots
- 2 x Scart

TOPFIELD NEW

TF-7700 HSCI / TF-7700 HCCI



HDTV for satellite and cable reception

- Supports MPEG-2, MPEG-4, H.264 and fully DVB compliant
- 2 Common Interfaces
- USB 2.0 supported for fast PC interface
- VFD Display for service information

eycos NEW

55.12 PVRH
HDMI



HDMI Output 576p, 720p and 1080i

- 8000 Services (TV and Radio) programmable
- Alphanumeric VFD Display
- 2 x Common Interface
- USB 2.0
- Videosignal RGB, CVBS, S-Video YUV

NEW

S60.12 PV2R
Multiroom



Digital Multiroom Twin Receiver

- 8000 Services (TV and Radio) programmable
- Alphanumeric VFD Display
- Multipicture Mosaik function
- 2 x Common Interface
- USB 2.0
- Videosignal RGB, CVBS, S-Video YUV

HUMAX NEW

PR FOX II



BLU FOX S



TOPFIELD

TF 6000 FE



Digital Satellite Receiver

- MPEG-2 Digital and fully DVB compliant
- DiSEqC 1.0, 1.1, 1.2 and USALS (DiSEqC 1.3)
- 5000 services (TV and Radio) programmable

TF 6000 T
Digital Terrestrial Receiver

- MPEG-2 Digital and fully DVB compliant
- 2000 services (TV and Radio) programmable
- Multilingual Audio support

Measuring Instruments

emitor
MEGALOOK

MEGALOOK helps professional users to do exact adjustments and maintenance of satellite dishes and of cable TV and terrestrial networks.



NEW

- Input frequency: 2-900 MHz and 920-2150 MHz
- 4.5" B/W Monitor for PAL/NTSC
- Lots of memory positions for spectrum pictures
- RS232 for PC-connection
- Built in, rechargeable battery.
- Only 7.5kg complete with carrying case

ALSO AVAILABLE:

- Comblook
- Digital Satlook NIT
- Satlook Micro
- Satlook Mark IV

MAXIMUM

V-Series



AVAILABLE AS:

- V-1 Single
- V-11 Single + DiSEqC
- V-2 Twin
- V-4 Quad
- V- 8 Octo

NEW

Full LNB range MAXIMUM available from stock

MICROELECTRONICS TECHNOLOGY INC.

High-Line-Series



AVAILABLE AS:

- MTI AP 8 T2NRC Single
- MTI AP 82 XT2N Twin
- MTI AK54 XT2N Quad

NEW

Full LNB range MTI available from stock

INVACOM QDH 031



AVAILABLE AS:

- SNH-031
- TWH-031
- VQTH-031
- QDH-031
- SNF-031
- TWF-031
- QTF-031
- QDF-031

Full LNB range INVACOM available from stock

HUMAX

F3 FOX CI



Digital Satellite Receiver with CI Slot

- Scrambled channel receivable with DVB CI.
- MPEG-II Digital & Fully DVB Compliant.
- Max. 4000 channels receivable.
- Channel list mode
- 4 Favorite channel groups
- DiSEqC version 1.0, 1.2 USALS compliant

Türkçe konuşan personele sahibiz !

Мы говорим и даём консультации на русском языке!

ALPS

GIBERTINI

PREMIERE

Inverto

mu

MICROELECTRONICS TECHNOLOGY INC.

Stab

ELANVISION EV-8000S

HOME MULTIMEDIA CENTER



Features

- Linux Operating System
- Ethernet Card 100 Mbit (Networking with TCP/IP, Samba Server supported)
- USB 1.1 Host Controller (recognizes USB-Sticks, Digital Cameras, external USB-HDD etc.)
- IBM Power PC ("STB04500/Pallas")
- Recording 2 channels simultaneously while playback another from HDD
- One touch recording with capability of taking over the pre-stored time-shift buffer
- Music Player
- API (Plugin) Interface
- Autobookmark (optional)
- Easy Creation of Favorite Lists during live operation
- Twin Tuner (with Loophrough)
- 2 CI + 1 Cardreader (optional)
- Alpha-Numeric VFD Display
- Truecolor OSD (16,7 Mio colors)
- Realtime Clock
- AC3 Dolby Digital Bitstream Output
- DISEQC 1.2 / USALS compatibel

TOPFIELD NEW

NEW

TF-6000 PVR E-LAN



Digital Satellite Personal Video Recorder

- Local Area Network (HTTP / FTP)
- Picture-in-Picture
- Dual Recording

TF-6000 PVR W-LAN



Digital Satellite Wireless Lan PVR

- Wireless Lan PVR
- Alphanumeric VFD Display
- Dual decoding (PIP) and Dual tuner

Multiswitches / DiSeqC - Switches

- SPAUN
- DTRON
- JAEGER
- JOHANSSON



From 2 in/1 out
up to 17 in/8 out



Full Range



emitor
DIGISAT PRO ACCU



Measuring instrument for dish-properties
Check two LNBs at the same time
With DiSeqC tester

Also available:

- Digisat
- Digisat+
- Digisat Pro
- Sat Beeper
- DiSeqC Checker
- DiSeqC Tester

LNBs

- MTI
- BEST
- INVACOM
- ALPS
- INVERTO, etc.



- Single Universal
- Twin Universal
- Quattro Universal
- Quad Universal
- Octo LNB
- Monoblock Single Universal
- Monoblock Twin Universal
- Monoblock Quattro Switch
- KU
- C Band
- Circular
- and many more

PCMCIA-Modules

- CONAX
- IRDETO
- VIACCESS
- ASTON / SECA
- CRYPTOWORKS
- CRYPTOWORKS (Arena)
- PREMIERE



NEW GENERATION

- ALPHACRYPT Light
- ALPHACRYPT Classic
- ALPHACRYPT TC
- VIACCESS MPEG 2+4
- CONAX MPEG 2+4

Parts

Multifeeder for 2, 3, or 4 LNB



Wallmounts

- 15 cm distance - Aluminium
- 25 cm distance - Aluminium
- 35 cm distance - Aluminium
- 45 cm distance - Aluminium
- 50 cm distance - Steel
- 35 cm distance - Steel



- F-Connector - 7 mm
- F-Connector - 7 mm waterresistant
- F-Connector - 4 mm and more

Remotesystems

- AV-Linker - Videosender for remote control
- Remote Blaster
- Zapline 2 and more



Koaxialcable

- High Quality coax cable
- Minicable Coax
- Mini-Twincable Coax
- > 100 dB / > 110 dB



Dishes

GIBERTINI

IRTE

TRIAx

emme esse
MULTIMEDIA SYSTEM



- 40 cm - White
- 70 cm - White, Black, Red
- 90 cm - White, Black, Red
- 100 cm - White, Black, Red
- 120 cm - White
- 130 cm - White, Black
- 160 cm - White

Big Dishes directly from our warehouse!
KTI, ORBITRON, IRTE

- SDI 1,50 m
- SDI 1,80 m
- Mesh 3,10 m
- Mesh 3,70 m
- Irte 2,00 m
- Irte 2,40 m



Motors

Aktuatoren/ Actuators

- Mini Actuators - 6", 8", 10", 12"
- Regular Actuators - 12", 18", 24"
- Heavy Actuators - 24", 36"



H-H Mounts

- SG 99 - up to 1,00 m
- SG 107 - up to 1,10 m
- SG 2100 A DiSeqC 1.2 - up to 1,00 m
- Stab HH100 DiSeqC 1.2 - up to 1,00 m
- Stab HH120 DiSeqC 1.2 - up to 1,20 m

More products and informations you`ll find on our website www.dobis.de



Edited by
Branislav Pekic

EUROPE

**CZECH REPUBLIC
VOLNY LAUNCHES IPTV SERVICE**

Czech telecom operator Volny has announced the launch of a new IPTV service called Volny TV. The service offers nearly 40 Czech and foreign TV stations, as well as first-run movie channels, video-on-demand, HBO Digital, the VOLNY Album, which enables on-line viewing and sharing of photos published on the Internet, games and radio. VOLNY TV also includes the service "My TV", which enables viewers to organise their own channel by compiling all the programs that they want to watch.

**ITALY
TISCALI TO LAUNCH IPTV IN OCTOBER**

Italian telecommunications company Tiscali will be launching its new IPTV service in late October. Thanks to a distribution deal with public broadcaster RAI, Tiscali TV will access three RAI channels, namely RAI Fiction, Rai Cultura and RAI Junior. Tiscali TV subscribers will also be offered PVR features that will allow for on demand access to these channels and to RAI 1, RAI 2 and RAI 3.

**PORTUGAL
PT LAUNCHES IPTV SERVICE**

Portugal Telecom has launched an 88 channel IPTV service in three target markets - Lisbon, Oporto and Castelo Branco - but intends to roll out the service to the entire country, with more than 100 channels, in the coming months. The launch of the IPTV service, which includes VOD and True HD content, will transform PT into a quadruple play operator (fixed and mobile telephony, Internet and TV). PT has invested over EUR 10 million to date in the service. Alcatel-Lucent have been selected as technological partner.

**RUSSIA
KOREA TELECOM TO LAUNCH IPTV TRIALS**

Korea Telecom plans to launch an IPTV service in Russia before doing so at home. Trials began August in Russia's Maritime Province ahead of a full launch next year. KT currently offers an Internet TV service in Korea called Mega TV, but it's considered only a halfway service as legal limitations bar real-time broadcasting. KT works through an affiliate in the Maritime Province, NTC, which has an 80% stake in the service in the Russian province. NTC has secured 30 Russian broadcast channels and plans to air real-time broadcasts over the Internet. It will also provide movies, TV programs and sports content via video on demand (VOD).

**UNITED KINGDOM
C&W and INUK TO DELIVER
IPTV NATIONWIDE**

Cable & Wireless will be first to deliver national IPTV services via broadband, through a wholesale deal with Inuk Networks, a triple-play service provider which has developed a platform to distribute broadcast quality TV and carrier-class telephony over closed IP-based networks. In addition, C&W will offer Inuk's IPTV platform to other wholesale DSL customers who want to provide their customers with a digital television offering. Cable & Wireless will deliver this triple-play offering to Freewire, Inuk's subsidiary. Besides the BBC, ITV, Channel 4, Five and Disney's ABC1, Inuk has also signed up international channel

partners including France's TV5, Al Jazeera, Germany's Deutsche Welle and PCNE of China.

SKY NEWS SIGNS UP WITH JALIPO

Sky News is making its 24-hour news service available online via internet TV start-up Jalipo, joining the likes of BBC World, EuroNews and Al Jazeera. Jalipo has opted for a pay-as-you-go model for TV, whereby viewers pay only for the amount of TV they have watched using the company's J:Credits system, rather than a monthly subscription. Sky News broadcasts will now be available via Jalipo in three different quality streams, with a range of on-demand content supporting the live channel feed.

OFCOM PLANS TERRESTRIAL HDTV

UK broadcasting regulator Ofcom has revealed plans for terrestrial HDTV services delivered through an aerial. According to Ofcom, it is possible to support four high-definition channels on the existing DTT network. Ofcom is expected to enforce a reshuffling of the DTT capacity with a partial move to MPEG-4 and/or DVB-T2 video compression for the new services.

NORTH AMERICA

**UNITED STATES
DIRECTV-10 BECOMES OPERATIONAL**

The DirecTV-10 satellite launched recently from Baikonur sent its first on-orbit signals in July to the Boeing Mission Control Centre in El Segundo, California, indicating the satellite is operating normally. The new satellite will enable DTH service provider DirecTV Group to expand its HDTV programming across continental USA, Hawaii and Alaska. After about two months of in-orbit testing, the satellite will move to its operating position of 102.8 degrees West. Its sister satellite, DirecTV-11, will also be launched this year. DirecTV expects to offer 100 HDTV channels by the end of 2007.

**HALLMARK PLANS HDTV
CHANNEL FOR 2008**

Crown Media Holdings has announced that it would launch the high-definition Hallmark Movie Channel in the first quarter of 2008. CEO Henry Schleiff told analysts that the operator of the Hallmark Channel was looking to fill a family-friendly niche in television programming. The high-definition channel will be simulcast alongside the Hallmark Movie Channel.

LATIN AMERICA

**BRAZIL
OI INVESTS US\$ 150 MILLION FOR IPTV TRIAL**

Brazilian fixed-line operator Oi is to invest US\$ 150 million in the launch of an IPTV trial in Rio de Janeiro, scheduled for later in 2007. Oi has already started the investing the funds in the purchase of a new platform to support the IPTV technology and upgrade the data distribution network.

**CHILE
TELSUR LAUNCHES IPTV SERVICE
IN SOUTHERN CHILE**

Chilean telecoms operator Telefónica del Sur (Telsur) has launched a "WiTV" IPTV service available for consumers in parts of southern Chile. Telsur has been planning the IPTV launch for more than a year and will offer the service on its broadband network between the southern Chilean cities of Concepción and Puerto Montt. Telsur has invested around US\$ 30 million in upgrading and expanding its broadband network, which now has around 50,000 clients. The service will offer some 80 channels.

**TELEFONICA LAUNCHES IPTV
SERVICE IN SANTIAGO**

The Chilean unit of Spanish giant Telefónica has launched IPTV services in capital Santiago, its first in Latin America. The operator has invested US\$ 20 million into network upgrades and equipment purchases to facilitate the IPTV rollout. The service is still in its initial phase and limited to parts of Santiago, but should expand to other parts of the city by next year. By the end of the year, Telefónica expects to have some 3,000-5,000 IPTV subscribers. The IPTV service offers VOD, with some 240 hours of content available. Swiss-based Advanced Digital Broadcast (ADB) has been selected as the supplier of IPTV set-top boxes.

TELEFONOS DE MEXICO TO ACQUIRE ZAP

Telmex Chile Holding, a unit of Telefonos de Mexico SAB, Mexico's biggest fixed-line telephone company, has agreed to buy Chilean satellite-television operator Zap Television Satelital Directa. Telmex will use Zap to offer packages of telephone, high-speed Internet and television services to residential customers. The deal, worth as much as US\$ 20 million, will give Telmex access to about 40,000 subscribers.

ASIA & PACIFIC

**CHINA
CHINASAT 6B LAUNCHED SUCCESSFULLY**

The Zhongxing-6B (ChinaSat-6B) communications satellite, manufactured by Thales Alenia Space, has been successfully orbited by a Chinese CZ-3B Chang Zheng-3B launch vehicle. ChinaSat-6B carries 38 C-band transponders that will be used for DTH broadcasting, and will enable satellite operator ChinaSatcom to expand its services throughout mainland China. The satellite operates in geosynchronous orbit stationed at 115.5 degrees East. SatcoDX lists the channels as they start to transmit at www.satcodx4.com/1155/

**INDIA
MTNL LAUNCHES IPTV SERVICES**

Government owned telecom company Mahanagar Telephone Nigam has finally announced the commercial launch of its IPTV service. The company had been testing their IPTV services in 200 homes across Delhi on a trial basis. MTNL is charging RS 500 as registration fee and a monthly fee of RS 90 will be charged for 30 free-to-air channels and the bouquet of Star and Zee networks. Viewers can pay an additional RS 30 to get Sony network channels. The software, hardware service set-up and content delivery for IPTV service is being managed by Aksh Optifibre. UTStarcom is providing the Rolling Stream, a broadband digital TV delivery solution.

**BHARTI AIRTEL IPTV TO
DEBUT BY YEAR'S END**

Bharti Airtel is planning to launch an IPTV service by the end of the year, targeting high-end consumers of the top 6-7 cities. The company has been testing the service in 1,000 households in Gurgaon. The launch would take place in Delhi and would be expanded to other cities including Mumbai, Chennai, Kolkata, Hyderabad, Bangalore, Gurgaon and Jaipur. Bharti is collaborating with UTStarcom for their IPTV service launch in the Indian market. The company is also aiming to launch its DTH service by the fourth quarter.

**INDIA SIGNS SATELLITE LAUNCH
CONTRACT WITH ARIANESPACE**

India's cabinet approved in August the placing of a contract worth up to US\$ 67.5 million with European space launch company Arianespace for launching satellites. According to Information

Minister Priyaranjan Dasmuni, the contract will facilitate the timely launch of GSAT-8/INSAT-4G in 2008/2009 and would also enable a number of navigation, telecommunications, TV broadcasting and broadband services.

INDONESIA

M2B WORLD OPTS FOR BNS IPTV SOLUTION

Hong Kong-based IP solutions provider BNS has deployed an end-to-end IPTV solution for Singapore's M2B World to launch its M2Btv service in Jakarta in August. M2Btv delivers multiple TV channels live over the Internet to homes that have a high-speed internet connection. Subscribers will be provided with a set-top box that connects to their broadband to watch the programs on demand on their TV sets. M2Btv will offer a wide variety of content which will be available through a tiered subscription service ranging from free access to premium a la carte. M2B World aims to sign up around one million subscribers this year for the Jakarta service, which is the second market M2Btv in launching in after Singapore, where the service debuted in July 2006. The service is set to launch in a number of other markets in the region in the near future, including Japan, China, Korea, Taiwan, Australia Malaysia and Thailand.

THALES ALENIA TO BUILD AND LAUNCH PALAPA-D SATELLITE

Indonesian satellite operator PT Indosat has contracted Thales Alenia Space to build and launch its broadband Internet satellite Palapa-D. The satellite is to be launched in 2009 and will have 24 standard C-band, 11 extended C-Band and 5 Ku-band transponders, with coverage of Indonesia, ASEAN countries, other Asian countries, the Middle East and Australia. About 40% of the transponders will be used by Indosat for its own purposes while the remaining 60% will be rented out. Palapa-D will occupy the same orbital slot as Palapa-C2, whose service life expires in 2011.

ISRAEL

SPACECOM TO ACQUIRE AMOS 4 SATELLITE

Spacecom Satellite Communications has announced it will purchase the Amos-4 communications satellite from Israel Aerospace Industries (IAI) for US\$ 365 million. Amos-4 should be launched in 2011 and placed at an orbital position around 70 degrees East. Amos-4 will incorporate multiple steerable beams in both Ku and Ka bands and will extend coverage to South East Asia and Africa. The Amos-3 satellite is scheduled for launch in 2007 and will be placed at 4 degrees West, eventually replacing Amos-1.

JAPAN

RUSSIAN ROCKET TO LAUNCH JCSAT-11

A Russian Proton-M rocket will put into orbit the Japanese telecom satellite JCSAT-11 from the Baikonur spaceport on September 6. The satellite belongs to JSAT Corporation.

BSAT-3A SUCCESSFULLY LAUNCHED BY ARIANESPACE

The BSAT-3a broadcasting satellite designed and built by Lockheed Martin for the Broadcasting Satellite System Corporation (B-SAT) of Japan, handling direct television links for the entire Japanese archipelago. It has been launched successfully on August 14 aboard an Ariane 5-ECA rocket. BSAT-3a will be located at orbital location 110 degrees East. BSAT-3a contains 12 130-W Ku-band channels (eight operating at one time) and is the sixth DBS in the 12GHz BSS band procured by B-SAT.

NEW ZEALAND

TARGETCAST TO PROVIDE IPTV SOLUTION

Local company TargetCast is negotiating to provide a local TV network with a user-friendly

broadband and IPTV platform technology solution, that is capable of providing TIVO-like functionality. Providing an optional full screen mode and pre-emptive downloadable client and content management capabilities, access will be provided to both current and archived shows. The system is unique in its ability to compare users, identify potential common interests, and present content either intuitively or through community recommendations that can then be accepted, denied or given a moderated rating with regards to future delivery.

SINGAPORE

SINGAPORE TELECOM LAUNCHES IPTV SERVICES

Singapore Telecommunications (SingTel) has started offering its IPTV services called 'mio TV' tomorrow, with an initial 33 TV channels. Subscribers can choose any channel at a minimum monthly subscription fee of 15 Singapore dollars, excluding taxes. Channel prices range from 3.21 dollars per month for the Zee Music channel, up to 12.84 dollars per month for high-definition TV channels.

SOUTH KOREA

KOREA TELECOM LAUNCHES HDTV ON IPTV

Korea Telecom has launched its new IPTV service using HDTV set-top boxes, which provides over 1,200 on-demand videos and 27 interactive services. Also available are an electronic program guide, user-created content, digital photos and personalized stock, and weather and sports information. The IPTV service uses HDTV set-top boxes based on STMicroelectronics' STI710x family of highly integrated HDTV decoder chips. During the final trial, KT chose the STI710x-based set-top boxes from Humax (model name: TS-110) and Samsung (SMT-H6170), both of which are KT's consortium partners for the country's IPTV service. Additionally, LG-Nortel, another consortium partner for the service, is also developing its set-top boxes based on the STI710x.

UNITED ARAB EMIRATES

ASTRIUM AND THALES ALENIA WIN YAHSAT CONTRACT

Al Yah Satellite Communications Company (Yahsat), a wholly owned subsidiary of the Mubadala Development Company, had awarded a contract to a joint team of Astrium and Thales Alenia Space to build their US\$ 1.66 billion dual satellite communications system ready for a launch in the second half of 2010. Yahsat will provide broadcasting services, internet trunking via satellite, corporate data networks and backhauling services to telecom operators. The Yahsat system will comprise of two operational satellites -YahSat 1A and YahSat 1B. Yahsat 1A is to be stationed at the orbital position of 52.5° East.

AFRICA

AFRICA

RASCOM TO LAUNCH AFRICA'S FIRST SATELLITE

The West Africa Development Bank (BOAD) has partnered with Africa's Regional Organisation of Satellite Communication (RASCOM), to launch Africa's first satellite in orbit to give coverage to the whole continent. So far, all satellite communication in orbit is provided by Western companies. A satellite giving coverage to the African continent will not only improve telecommunication services in the continent but will also make sure that digital satellite broadcasting services are accessible to the majority of Africans. The project is expected to cost about 1.6 billion FCFA. The RASCOM-1 satellite will be launched on December 1 from French Guiana. It will have both Ku-band and C-band transponders and will be positioned at 2.85 degrees East.

TERRA

9 inputs up to 16 outputs

RADIAL MULTISWITCHES MSR9XX SERIES

Really compact one!

TERRA UAB
Draugystes str. 22, LT-51256, Lithuania
Tel. (+370 37) 313444 Fax (+370 37) 313555
E-mail: terra@terraelectronics.com
http://www.terraelectronics.com

The 14th International Electronic Media and Satellite Communications Event for the Middle East, Africa and South Asia

4 - 6 March 2008
Dubai International Convention and Exhibition Centre



CABSAT2008 is the **ONLY TRADE EVENT** that brings together a large number of global and local players in the **Broadcast & Production, Satellite Communications and Cable & Satellite Equipment and Accessories** sectors in the region.

With the **EXPLOSIVE GROWTH** experienced by these sectors in the region, CABSAT provides an ideal platform to launch products, exchange ideas and network with your industry peers.

CABSAT2007 was a resounding success!

580 companies | **50** countries | **8,530** quality visitors

92% of exhibitors felt that CABSAT was an important part of their marketing strategy in the region*

"We exhibit at over 20 shows annually. CABSAT is by far the best in terms of calibre of attendees and focus on satellite and business opportunities."

Scott Aukema, Senior Manger Channel Marketing, iDirect Technologies*

Explore business opportunities in the region!
BOOK A STAND AT CABSAT2008 NOW!

*Feedback compiled at CABSAT2007

For further information, please contact:
CABSAT Team, Dubai World Trade Centre,
P.O. Box 9292, Dubai, UAE.
Tel: (+971) 4 308 6077 / 308 6430
Fax: (+971) 4 318 8607
Email: cabsat@dwtc.com

Organised by



Supported by



Arab States
Broadcasting Union



Asia Pacific
Broadcasting Union



International Association of
Broadcasting Manufacturers

eycos[®]

multimedia systems

S 80.12 HD

New Kid in Town!



Uses External Hard Drive!

HDTV
RECEIVER

One of the first HDTV Receivers with PVR Using an External Hard Drive!



USB 2.0 and S-ATA Interface for External Hard Drives
9 Digit Blue Alphanumerical VFD Display
6000 Channel Memory

Composite Out (YUV)
Replay Pictures and MP3
Output: HDMI, 2 CI Slots

www.satforce.com

AUSTRIA
A-5300 Hallwang, Mayrweissstrasse 11
TEL +43 (0)662-665 699-0
FAX +43 (0)662-665 699-20

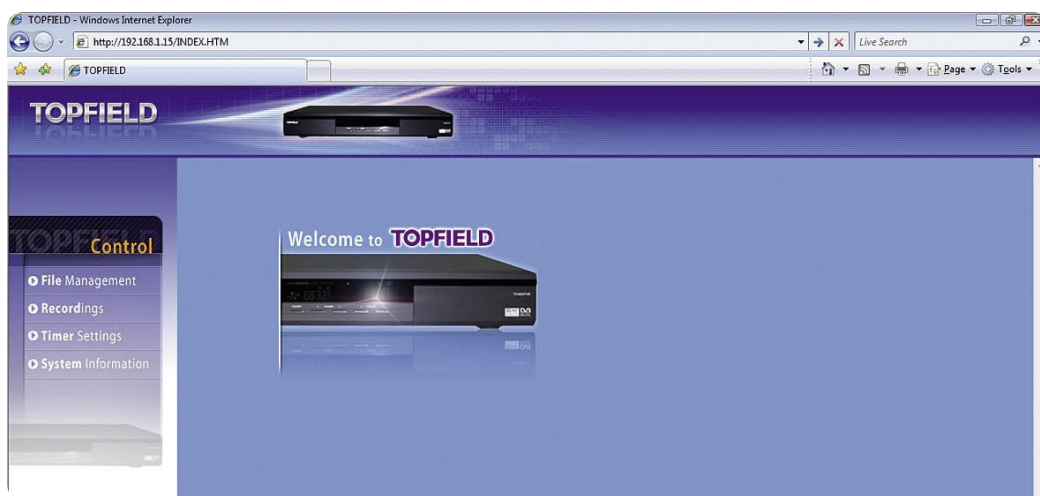
GERMANY
D-83395 Freilassing, Troppauerstrasse 6
TEL +49 (0)8654-770 98-0
FAX +49 (0)8654-770 98-15

SATFORCE[®]

多用途的网络接口

Thomas Haring

现在,越来越多的制造业者为其 PVR 接收机不仅配置了标准的 USB 2.0 接口,而且还配置了网络接口,有有线的也有无线的。实际上理由相当明显:如果你用 USB 2.0 的连接距离超过 10~15 米远,你就会知道你接近极限了。



通过互联网,用 FTP 访问 Topfield 接收机。

制造业者现在正在抓紧研究这一类客户:他们的接收机放在客厅,但是他们的个人计算机却安装在某处,如办公室或二楼。实际上借助成熟的网

络技术为制造业者省掉了一些工作。由于有了诸如 FTP 这样的标准化协议,USB 连接就不再需要额外的驱动程序来传送音像,每一个实用的

工具软件用起来都没有任何的问题。

值得一提的是网络连接可以使你与外面的世界有更广泛的联系,如果网络连接和

路由器都配置适当,你就可以从世界上任何一方来访问你的硬盘。

这可能是非常实用的,例如你碰巧因公出差,在酒店的房间里就可以确定你家中录制节目的定时器是否如期工作,而它也可能使录像节目的网络传送完全合法化。这也就是说,你可以直接地访问美国亲属的接收机硬盘,并将其录制的母语节目轻易地通过互联网进行传过来并观看。你所需要的只是有人在另一端设置好接收机并将其连接到互联网上。

当众多制造业者慢慢地认识到网络连接优势的时候,有一些厂家已经捷足先登了。为增加 FTP 协议功能,互联网主要借助 HTTP 协议,那么为什么不给接收机自己网络服务器呢?

这种可能性的前景是迷人的:想像一下吧,你正在计算机前工作,你所忘记录制的喜爱的电视节目录像突然出现了,而通常你起床后要走到客厅用手打开接收机才能录制节目。但是如果你碰巧拥有一个带有网络接口相应功能的



通过互联网,借助接收机上的网络连接界面,直接在网上收看卫星电视。



CHOOSE YOUR OWN OPERATING SYSTEM!

AB IPBox 250S PVR
AB IPBox 420S PVR
AB IPBox 422S PVR

MULTIBOOT FUNCTION!

WITH
NEW



THIS FUNCTION IS A POWERFUL ADVANTAGE OF
AB IPBox 250S PVR, AB IPBox 420S PVR, AB IPBox 422S PVR
RECEIVERS THAT STRONGLY DIFFERS THESE DEVICES FROM OTHER PRODUCTS.

The same way you can configure your own personal computer you can adjust your Linux **AB IPBox** satellite receiver. Thanks to the **Multiboot** function just choose one of the operating system - image (for example Enigma) and utilize its advantages or simply select the other one. It is easy to set up the default image.



AB-COM s. r. o.
Gogoľova 1
955 01 Topoľčany, Slovakia
e-mail: info@abcom.sk

tel.: +421 - 38 5362 611
fax: +421 - 38 5322 027

ab-com
www.abipbox.com



如用 Slingbox，从连接到互联网上的卫星接收机上接收到一个视频数据流。

接收机,那你就坐在座位上通过电脑上的网页浏览器来访问接收机的控制中心。依靠机器的生产及型号,几乎每个功能都被你使用上。每个型号其基本功能都是相同的:你可以开始/停止录制、设定定时器、从个人计算

机上对现有的录像进行删除/移动/重新命名或复制。

其他的制造业者走得更远:即提供全部遥控功能,这是通过电脑屏幕来实现远程遥控的。换句话说,你能遥控你接收机的所有功能,就好像它正在你面前一样。

而你也必须再想向,因为有些功能并不是必需的,从你的办公室走到客厅有时候不是一件坏事情。但是能够在假期你的酒店房间里遥控你的接收机,这些功能真的有用。

有了这样一个接收机,你会能够从世界上任何一点来遥控利用它。一户较大的机顶盒制造业者真是太有才了,他们让机器具有警报和安全功能。在你度假之前,把你的接收机连结到一台小摄像机上

并摆放到适当位置,例如在你家的前门口。当你出门时,你随时能检查家里的每件东西是否安然无恙。这样一来当你不在家的时候,没有人敢闯近来。

你的接收机越是有较多的控制功能,那安全性就越是重要。如果有人未经你的允许而擅自访问你的接收机硬盘并造成损失,例如,删除你喜欢的节目录像或你的频道目录,毫无疑问,你就会不高兴了。

基于这个原因,大多数的制造业者没有忘记你的安全要求,而提供了 FTP 和HTTP 连接传送协议的密码通道。当然,当你只用你家里的网络进行内部连接时,你也可以放弃这个功能。

和网络连接第三种有趣的可能性是流媒体服务。其全


JONSA Technologies Co., Ltd

website : www.jonsa.com.tw
 e-mail : saccount@jonsa.com.tw
 Tel : +886 49 2260666
 Fax : +886 49 2260675



通过互联网, 接收机显示天气预报。

部属于 IPTV , 你最近几年已经听得越来越多了吧。

除互联网和电话服务之外, 每个互联网服务提供商也提供 IPTV 服务。由于互联网连接的带宽正在变成越来越宽, 使其渐渐流行。不幸的是, 这些增值服务仍然昂贵,

而且在计算机上看电视并不太有趣。

但是考虑到这种技术在全世界的应用就可以想象到这样一种情形: 你在加勒比海的某处度假, 但是又不想错过自家的八点钟新闻。除非

你来自于美国, 否则你在酒店电视上发现有些频道的概率很低。

那为什么不用笔记本电脑通过无线上网观看新闻节目呢? 前提是你的机顶盒不但要一个网络接口, 还要有音频/视频输出能力, 再加上该酒店要具有高速宽带连接。通过FTP 和 HTTP 服务, 你不但能从远处遥控你的接收机, 而且还能收听观看你接收机里的声音和图像。

如果你沉醉于这些听起来很吸引人的可能性, 但是你的接收机又碰巧没有网络接口, 别害怕, 你还有其他的方法来打造你自己的 IPTV 系统。

在以前的《国际卫星电视》杂志里我们写过关于 Slingbox 的报道, 它是一个

能够通过互联网获得节目源, 并且能像 IPTV 一样在你的本地网络中分配信号的装置。由于内建 IR 发射器, 你所有的电子装置, 如电视、录象机、DVD、卫星电视接收机, 等等, 都能从远处受激遥控。

第四个 (对于玩家) 也是最有趣的应用是通过机顶盒访问互联网的数据。当大部分制造业者使用这个实际功能来更新软件和频道目录的时候, 另一部分已经采取措施来使他们的接收机变成更加有趣些。这是一些小乐趣, 例如显示最新的天气预报数据, 或者告知你电子邮件到达了。它将伴随着与互联网越来越多的连接, 你的机顶盒可以直接下载到多种有用的程序, 像是 MP3播放器、数字相片册, 等等。

TechnoTrend S2-3650CI

Handy HDTV-CI Receiver for Your PC



The German company

TechnoTrend has for some time now been working on HDTV solutions for your PC or laptop. Since many PC's have problems with available card slots, TechnoTrend decided to design an external box that is easily connected to your PC or laptop through the USB 2.0 interface.

Incorporating a USB 2.0 interface was not an arbitrary choice; this type of connection has established itself as a standard that can be found on most modern PCs and laptops today. There's also a nice little side-effect: thanks to the computing power that comes with a PC, TechnoTrend can offer its little HDTV receiver box for an unbeatable price.

On the front side of the S2-3650CI box that is only 15x10x3 cm in size can be found a CI module slot for reception of any PayTV form. In addition to

checking out Irdeco, Alphacrypt, Conax and Viaccess modules, we also confirmed that a Crypto-works module was just as easily recognized. PayTV reception is therefore not a problem at all.

On the back can be found an IF input, a USB connection as well as a connection for the external 12V power supply.

The included remote control sits nicely in your hand although the buttons themselves are rather small; unless you have smaller fingers, pressing two buttons at the same time is a

definite possibility. The included 48-page user manual provides detailed instructions on how to use their own "TechnoTrend Media Center" software.

Thanks to the USB connection, installation is a piece of cake. We also appreciated the overall mechanical quality of the box; no plastic parts were used. This left us with a very positive impression.

Everyday Use

The installation of the S2-3650CI box and its accompanying software is plug&play compatible. After connecting the box to a PC, the hardware is automatically recognized by Windows at which point it asks for the driver CD.

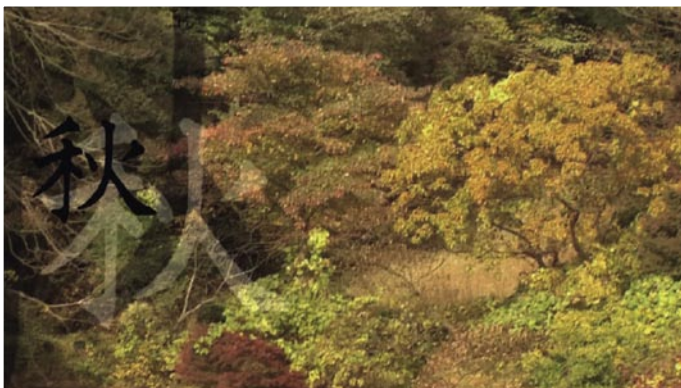
Once installed, the only remaining step is to set up the "TechnoTrend Media Center". It isn't even necessary to restart the PC; the box can be used immediately. We also had no trouble setting up this box on a 32-bit Windows Vista machine.

Some extra points were awarded here.

TechnoTrend recommends using an Intel Pentium 733 MHz PC for normal DVB-S. For DVB-S2 it should be at least a 3.4 GHz Pentium 4 or AMD 3500+/Dualcore along with a powerful graphics card such as the ATI X1800/X1900 or Nvidia 6600GT/7600GT. The PC itself must also be operating under Windows XP or Vista.

The included software is divided into two sections: the TechnoTrend Media Center software for TV reception and a tool for accessing data services such as Internet via satellite. The Media Center comes preprogrammed with a nearly complete channel list from the popular European ASTRA 19.2° east orbital position. The entire channel list is sorted by provider making it easy to find the channel you want.

If you want to receive other satellite besides ASTRA, this can be handled via the Channel Search menu. More than 90



HDTV via ASTRA 19.2° east as an example |



Winners of The Queen's Award For International Trade 2007, Horizon Global Electronics is a UK Company established in 2001 specialising in the design and manufacture of hand held test equipment for the digital satellite and TV sector. Our strength lies in being able to find innovative solutions to leading technology issues .

HORIZON

For a reliable solution!

NEW FOR JUNE 2007

THE HORIZON DIGITAL SATELLITE METER USB & USB PLUS



New for 2007 Horizon Global Electronics Ltd takes its legendary satellite meter range to the next level with the all new HDSM USB and HDSM USB PLUS.

The HDSM USB PLUS is packed with features only normally found on high end test and measuring equipment allowing the user to take their signal quality beyond the max.

HDSM USB Specifications

- New graphics capable 128 x 64 pixel high brightness (adjustable) backlit LCD
- New Full Speed USB 2 interface with automatic driver download
- Full backwards compatibility with existing HDSM downloads
- New 3300 mAh battery pack offering in excess of 7 hours operation
- New nylon F connectors for maximum durability
- Faster processor with recall of last selection used
- New manual carrier configuration mode
- Twice the satellite setting capacity with 64 selections available
- Lock indication within 100ms of acquiring the satellite
- Custom program files available on request (e.g. VSAT)
- L-Band, C-Band, Ku-Band and Ka-Band capability
- Quality indicator (Pre BER) displayed alongside RF Level (dBuV)
- Pre and Post BER can be displayed with their actual values (setup option)
- Toggle to display Post BER and Carrier to Noise (dB)
- DiSEqC switch commands (available from sub menu)
- Symbol rates 2Msymb to 45Msymb
- Frequency range 950 to 2150MHz
- Input impedance 75 Ohms

- LNB Pass / Fail test function
- LNB short circuit protection
- Satellite cable integrity test
- Upgradeable firmware
- Intelligent internal AC charger 100 to 240 V AC
- Automatic fast and trickle charge modes
- 12 volt in car charger supplied
- USB lead supplied
- CE approved
- Compliant with EN 61326-1 : 2006 (EMC) and EN 61010-1 : 2001 (Electrical safety)
- Registered design
- Free product support via phone and email

HDSM USB PLUS (additional features)

- Easy to use Spectrum Display Mode
- QPSK Constellation Diagram (with zoom function)
- Histogram display with up to 9 simultaneous carrier measurements for single cable installations (SCR)
- Data Logging (upload installation measurement data to your PC)

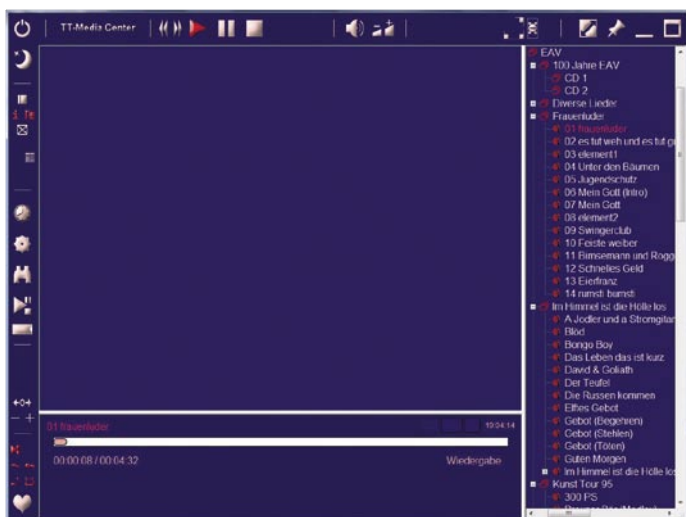
From Test To Measurement

HORIZON IS MOVING

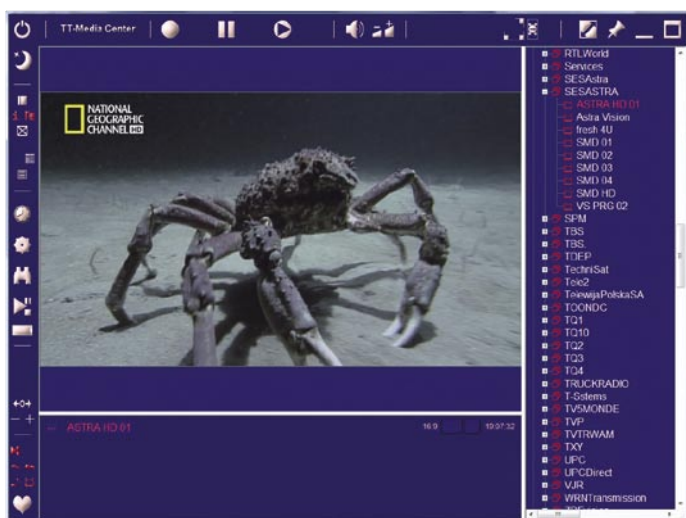
From 8th June our new contact details will be:
Horizon Global Electronics Ltd,
Unit 3 West Side Flex Meadow, Harlow,
Essex, CM19 5TJ, United Kingdom
Tel: +44 (0)1279 417005 Fax: +44 (0)1279 417025

DEALERS AND DISTRIBUTORS WANTED

visit our website
www.horizonhge.com
email: sales@horizonhge.com



The Media Center as a Jukebox – MP3 playback!



HDTV via ASTRA 19.2° east in a window!



EPG!



European, Asian and American satellites are preprogrammed with up-to-date data; this helps to make channel scanning fun again. It is also just as easy to expand or edit the transponder data.

Even every possible local oscillator frequency (LOF) is freely selectable.

In addition to a manual transponder scan, an entire orbital position can be scanned automatically. An 80-transponder satellite required about nine minutes for this task to be completed.

DiSEqC 1.0 is available for the control of up to four LNBs. Unfortunately, DiSEqC 1.1 for the control of up to 16 LNBs is currently not supported. At this point it should be mentioned that an unlimited number of channels can be stored and thanks to its easy-to-understand presentation and the Favorites lists, you should never lose track of what you have.

The "main panel" of the Media Center is divided into three sections. Thanks to the preprogrammed channel list, the user can jump right into TV viewing; the first channel doesn't need any more than two seconds to appear on the screen.

The channel switching time is actually quite good considering this is all happening through a PC. Switching between channels on the same transponder is taken care of in just about one second; between two different transponders, the software needs about two seconds. EPG data can also be displayed as long as this information is made available by the provider. Information on current and upcoming programs is displayed in a window near the bottom of the screen.

The EPG in the S2-3650CI box might make some owners of standard set to boxes green with envy. The software is able to read in all of the EPG data only a few seconds after switching to a new channel. The user can then take this data, including expanded EPG data, and arrange it in a more easy-to-read fashion with just the push of a button.

A Channel Magazine function

is also offered. In this mode the software displays the EPG data of all previously defined channels next to each other in an organized way so that, for example, with a single glance you can see what your favorite channels have in store for you in the evening.

If you're sitting comfortably watching TV and the telephone rings or someone comes knocking at your door, the TimeShift function lets you pause the program you are watching and pick it up again at a later time.

With the help of the Timer function, numerous programs can be marked for recording; weekly and daily timers are supported. Naturally, for recordings to take place the PC must be turned on; at the end of a recording, the Media Center will see to it that the PC is turned off. Of course a currently running program can be recorded at any time on the PC's hard drive.

We were quite pleased with the integrated teletext function. In only a few seconds it managed to download all of the available pages making it possible to access any of those pages or sub-pages in those same few seconds. These pages can also be saved in HTML format on your PC.

The TechnoTrend manufactured tuner is quite sensitive and has no problems handling small bandwidth SCPC signals. Our 1.6 Ms/sec test transponder was no obstacle for the S2-3650CI box; high symbolrates also presented no difficulties. In addition to QPSK modulation (necessary for DVB), the box and software also supports DVB-S2. Reception of the constantly increasing number of HDTV programs in MPEG4 using the H264 standard is no longer a problem.

After checking out all of the basic functions, we naturally wanted to test its HDTV capabilities. It didn't take long at all to find the FTA channels on ASTRA at 19.2° east and in just about two seconds we were enjoying the first channel in top-notch picture quality.

Only in a direct comparison could we see what the difference in HDTV quality meant. While

Arabic	العربية	www.TELE-satellite.com/TELE-satellite-0711/ara/technotrend.pdf
Indonesian	Indonesia	www.TELE-satellite.com/TELE-satellite-0711/bid/technotrend.pdf
Bulgarian	Български	www.TELE-satellite.com/TELE-satellite-0711/bul/technotrend.pdf
German	Deutsch	www.TELE-satellite.com/TELE-satellite-0711/deu/technotrend.pdf
English	English	www.TELE-satellite.com/TELE-satellite-0711/eng/technotrend.pdf
Spanish	Español	www.TELE-satellite.com/TELE-satellite-0711/esp/technotrend.pdf
French	Français	www.TELE-satellite.com/TELE-satellite-0711/fra/technotrend.pdf
Greek	Ελληνικά	www.TELE-satellite.com/TELE-satellite-0711/hel/technotrend.pdf
Croatian	Hrvatski	www.TELE-satellite.com/TELE-satellite-0711/hrv/technotrend.pdf
Italian	Italiano	www.TELE-satellite.com/TELE-satellite-0711/ita/technotrend.pdf
Hungarian	Magyar	www.TELE-satellite.com/TELE-satellite-0711/mag/technotrend.pdf
Mandarin	中文	www.TELE-satellite.com/TELE-satellite-0711/man/technotrend.pdf
Dutch	Nederlands	www.TELE-satellite.com/TELE-satellite-0711/ned/technotrend.pdf
Polish	Polski	www.TELE-satellite.com/TELE-satellite-0711/pol/technotrend.pdf
Russian	Русский	www.TELE-satellite.com/TELE-satellite-0711/rus/technotrend.pdf
Turkish	Türkçe	www.TELE-satellite.com/TELE-satellite-0711/tur/technotrend.pdf

SDTV channels hardly put any kind of load on the CPU of our Intel Core2 1.86 GHz machine, HDTV reception required much more CPU power. Our machine was able to handle this without any problems; there were also no negative effects to be seen on any of the other software programs that were running. It is therefore possible to watch

TV and work on your PC at the same time. Video and audio flowed smoothly with perfect synchronization between the two at all times.

If you happen to have an AC3 or Dolby Digital stereo system linked with your PC, you can naturally also take advantage of superior audio quality in addition to a super-sharp picture.

tion to a super-sharp picture.

In the Media Center software it is possible to program all of the buttons on the included remote control to whatever you need if the default settings happen to not be good enough. In addition to TechnoTrend's Media Center software, a variety of other programs are also made available that can be used with this box.

And don't worry; if you're one of those that simply can't do without ProgDVB, you can relax, this box also works nicely with this software. In the latest version of ProgDVB, DVB-S2 support was also implemented; the Media Center as tuning aid in the background is now a thing of the past.

Contrary to some DVB-S2 set top boxes, the TechnoTrend Media Center has no trouble handling BBC's Sky Digital transponders on ASTRA 2D at 28.2° east.

In addition to TV reception, the Media Center can also play back videos from the PC in all the different formats. Thanks to the integrated picture-in-picture function, the live TV picture can be displayed at the same time in a small window or vice-versa, the live picture in a large window and the video playback in a small window.

Annoying commercials can be skipped over. Not only that, the software can also act as a jukebox and play back any music data format. This is all nicely integrated into the channel list.

Through its own menu page

A special note for DXer's and hobbyists: the TechnoTrend S2-3650CI box can, like many other PC DVB-S solutions, also handle MPEG 4:2:2 assuming of course that the proper Codec is installed.

Expert conclusion

+ The TechnoTrend S2-3650CI is a true alternative to an HDTV set top box. You get quite a bit of power for not too much money. The included software functioned perfectly.

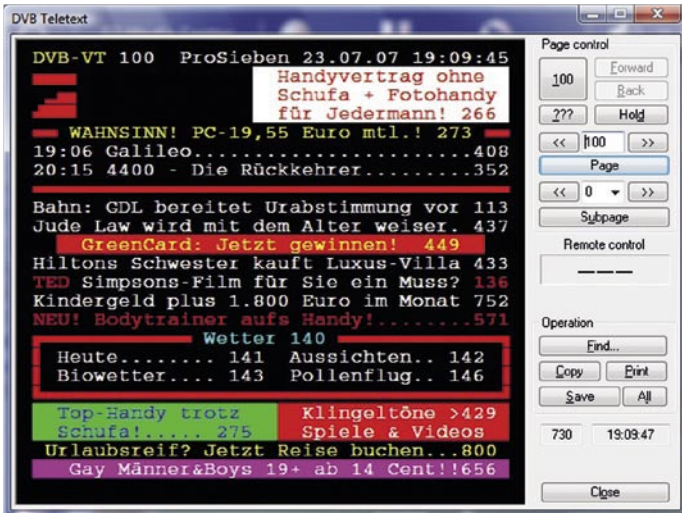
- An expansion of the DiSEqC protocol to 1.1 would be nice to have.



Thomas Haring
TELE-satellite
Test Center
Austria

TECHNIC DATA

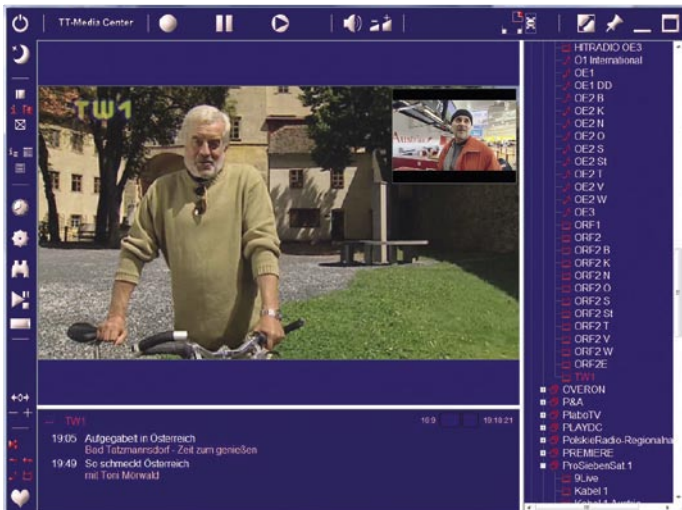
Distributor	DVB-Shop, Deutschland
Tel.	+49-34954/31960
Fax	+49-34954/49233
Website	www.dvbshop.net
E-Mail	webmaster@dvbshop.net
Model	TechnoTrend S2-3650CI
Function	USB box for reception of DVB and DVB-S2 in SDTV/HDTV
Channel Memory	unlimited
Satellites	93
Symbolrate	4-45 Ms/sec.
SCPC Compatible	yes (starting at 1.6 Ms/sec. in our test)
USALS	no
DiSEqC	1.0
EPG	yes
C/Ku-Band Compatible:	yes



Teletext |



TV Guide |



Picture in Picture |

Jiuzhou DVS-2018BS

专业接收机



如果你曾经在较硬的物体上钻孔,先是用不知名的钻机,然后再用专业的钻机,你就会知道差别在哪里了。“专业”两个字通常是高质量的同义字,即高度承受力和高度坚固。你能想象一个美发师使用在一家自选市场里买的便宜吹风机,而不是专业的吹风机吗?

在卫星电视领域中,我们也有专业的接收机。其中一款就是中国制造厂商——九洲技术公司寄给我们的。包裹相当大而且坚固,就是你期待的专业测试、测量设备包装。接收机可以安放在一个标准的19吋机柜里。前面板的高雅由于安装了两个CI插槽而稍稍受些影响,但是专业设备不是设计来美化你客厅的。LCD显示屏是2×20字符型并带有背光源。紧邻它的是状态显示

是分立的并且有3股电线。地线提供屏蔽,也就是保护在金属外壳里不同装置之间的电位,它和左面接地的效果是相同的。你可能曾经有过这样的经验:当你把电缆连接到机顶盒的时候会受到一个小小的电击,这是因为普通的接收机不使用有三股电线的电源线,因而没有接地的缘故。

在介绍其余接口以前,我们应该介绍什么是专业接收机

模拟电视效果的专业技术人员,然后由其调制到一个频道上并发送给整个网络。在这种情况下,就是从数字卫星电视到模拟有线电视的转变。这样的信号可以被一台典型的电视机通过连接到有线电视网络而收看到。操作者必须根据入网电视频道数量的需要在前端安装同样数量的专业接收机。

在数字有线电视网络中,我们不向机房传送模拟影像和声音信号,我们需要的是转发器传送的数据流。普通接收机不能输出这样的数据流,只有专业接收机具有这种能力。数据流在ASI接口输

据流,有线电视台的操作管理员可以选择把频道调制混合在一起,而不是最初分别来自卫星的状态了。所以,我们不是简单地一对一地把卫星转发器的节目送到有线电视网络中。而且,无论操作管理员选择什么,他总是需要每一个转发器配备一台专业的接收机。注意不同点:这次不是一个频道而是一个转发器配备一台专业的接收机。

回到后面板来看,ASI输出接口用来输出解密数据流



LED灯,它根据转发器锁定与否显示绿色或红色。只有6个控制按钮:菜单、OK和方向箭头,没有电源按钮,也没有遥控器。这款接收机不是用来远距离操作的。

前面板与普通接收机并没有什么区别,但是其后面板则大不一样。只有一些接口与家用接收机是相同的:一进一出LNB、RS 232、RCA立体声音视频接口和电源开关。我们能容易地猜测出他们默认的连接是:LNB、第二个接收机、个人计算机和一架电视机。电源线

的功能,读者们以前从没有见过这些装置。专业接收机应该是从选择的转发器中接收数字卫星电视信号并输出音频和视频的模拟信号给所选的电视频道,或者输出完整的数码流,包括转发器传送的所有数据。专业接收机用于模拟或数字有线电视的前端。

如果我们有典型的模拟有线电视网络,我们就使用模拟视频输出端子(BNC接口用于CVBS信号)和均衡的音频输出端子接到XLR接口上。两者的信号是要送给负责调节

出。ASI接口是异步串行接口,而且同SPI(同步并行接口)一起都是用于数字电视前端传送数据流的接口。该数据流包含一个给定的转发器所有频道的视频、音频、节目信息和相关数据。我们将它送入数字有线电视调制器(调节QAM),并在有线网络里镜像全部转发器。当然,观众家里一定要有有线电视电视机顶盒。这些机器等同于卫星接收机,只不过是来接收数字有线电视的。

有了从一些转发器传送的数

(它提供给我们CAM模块和面板上的智能卡插槽)及未解密数据流。后者被送到其它专业接收机来解密(通过ASI输入接口)或到其他的前端设备。

安装

DVS-2018BS的屏幕图形仅有一个开机界面和一个很基本的信息条(频道数字、频道名称、PCR PID、视频PID和音频PID)。所有设定的完成要借助面板那个双排字符的显示窗,因为菜单结构不可



QUALITY MADE IN GERMANY

integrated
DigiButler  Service



GOOD (2,2)
Tested: 11 LCD devices
Best rating 2,2

TechniSat HD-Vision

The first LCD-TV with 3 x DigitalDirect capability



TechniSat HD-Vision is the first LCD TV to feature an integrated multi-reception tuner for all transmission standards including DigitalSAT, digital and analogue cable TV as well as DVB-T. The decoding system CONAX is integrated for Pay-TV and Pay-Radio. An integrated CI slot can be used for additional CAM based encryption systems. The HD-Vision range includes a 32 and 40 inch model, with or without integrated hard drive (PVR), with over 30 individual models. The HD-Vision was voted best TV by Stiftung-Warentest with a rating of 2.2.

TechniSat[®]
DIGITAL
DAS ORIGINAL

www.technisat.com

TechniSat Digital S.A. · Mediacenter Betzdorf
11, rue Pierre Werner · 6832 Betzdorf / Luxembourg
Phone: +352 710 707 900 · Fax: +352 710 707 959
E-Mail: international@technisat.com

Download this report in other languages from the Internet:

Arabic	العربية	www.TELE-satellite.com/TELE-satellite-0711/ara/jiuzhou.pdf
Indonesian	Indonesia	www.TELE-satellite.com/TELE-satellite-0711/bid/jiuzhou.pdf
Bulgarian	Български	www.TELE-satellite.com/TELE-satellite-0711/bul/jiuzhou.pdf
German	Deutsch	www.TELE-satellite.com/TELE-satellite-0711/deu/jiuzhou.pdf
English	English	www.TELE-satellite.com/TELE-satellite-0711/eng/jiuzhou.pdf
Spanish	Español	www.TELE-satellite.com/TELE-satellite-0711/esp/jiuzhou.pdf
French	Français	www.TELE-satellite.com/TELE-satellite-0711/fra/jiuzhou.pdf
Greek	Ελληνικά	www.TELE-satellite.com/TELE-satellite-0711/hel/jiuzhou.pdf
Croatian	Hrvatski	www.TELE-satellite.com/TELE-satellite-0711/hrv/jiuzhou.pdf
Italian	Italiano	www.TELE-satellite.com/TELE-satellite-0711/ita/jiuzhou.pdf
Hungarian	Magyar	www.TELE-satellite.com/TELE-satellite-0711/mag/jiuzhou.pdf
Mandarin	中文	www.TELE-satellite.com/TELE-satellite-0711/man/jiuzhou.pdf
Dutch	Nederlands	www.TELE-satellite.com/TELE-satellite-0711/ned/jiuzhou.pdf
Polish	Polski	www.TELE-satellite.com/TELE-satellite-0711/pol/jiuzhou.pdf
Russian	Русский	www.TELE-satellite.com/TELE-satellite-0711/rus/jiuzhou.pdf
Turkish	Türkçe	www.TELE-satellite.com/TELE-satellite-0711/tur/jiuzhou.pdf

箭头按钮,你可以把它调整到适当的数,然后再按右箭头按钮把加亮区调到第二个数字。当所有的数值设置完毕,再按“OK”完成这个过程。这样你能完成所有没有 0~9 按钮的设定。

也是在这一子菜单中, 我们可能设置数字数据参数, 诸如: 输出数据包长度 (比特数) 和输入/输出 ASI 接口。那数字数据流以 188 或 204 位长的数据包输出。188数据包没有里德·所罗门错误订正密码。如果我们选择这一格式,下列的装置 (QAM 调节器) 一定设置增加这 16 位比特。

完成后, 我们可以进入到第二层子菜单: 频道搜索。在这里, 我们仅能搜寻“搜索 TP 子菜单”项目里进入的转发器。如果转发器传送的 NIT 表调整了其他转发器的参数,我们选择其他两种可能性之一会得到不同的结果: 搜索卫星或搜索网络。搜索卫星导致搜索我们手动进入的第一个 NIT 表提供的所有转发器。

例如,在进入 13°E 的 Hotbird 卫星转发器 (10.719 V, 27500) 后开始搜索卫星, 我们得到了 419 个电视频道和 154 个广播频道 (包括加密和免费节目)。搜索 10.758V 27500 上的 TPS 转发器, 得到了 403 个电视频道和 153 个广播频道。搜索网络在上述转发器上不工作,而在另外的转发器 (10.892 H, 27500) 上则工作,这是波兰的 Cyfra+ 转发器平台。网络搜索的结果是这个转发器有 631 个电视频道和 197 个广播频道。而卫星搜索的结果是有 655 个电视频道和 202 个广播频道。很明显, 找到哪些频道和多少频道取决于 NIT 表中起始转发器传送的数据。

频道搜寻非常迅速。DVS-2018 BS 能够在 2.5 分钟之内在 Hotbird 卫星上寻找

到 655 个频道。然而, 有个疑问是: 一个专业的接收机中是否真的需要卫星和网络搜索? 答案是这样的: 相同的频道可能由多个转发器传送。在此情形下, 输入包含那个重要频道转发器的调谐参数可能是有用的。如果在基本转发器上出现意外, 我们可以很快地转到另一个转发器以保证连续服务。

在频道搜索菜单下的最后一个菜单项目是通过接收机软件更新实现 OTA 下载。也可以用个人计算机通过后面板上的相应接口实现升级。

在频道管理子菜单中, 你可以选择用 CAM 模块来解密哪一个频道。我们在频道管理子菜单能做的另外一件事是正在电视和广播之间进行切换, 当我们离开它时它会停留在电视或广播模式上。

接收机以 VBI 形式正确地输出图文电视文件, 用装有图文电视解码器的电视机来阅读是不成问题的!

日常的使用

为检验接收机的性能, 我们调谐它对准一些转发器和频道。在此过程中, 我们试验过的转发器有高和低的符码率。举例来说, 我们锁定了在 Hellas 2 号卫星 (39°E) 上一个 SCPC 转发器上的 Pgm1 频道 (11.135V, SR=1425, 3/4) 和同一个卫星上的《声音》频道 (12.524H, SR=30000, 7/8)。Pgm1 的符码率实际上低于额定范围 (2~45MSPS), 但是 DVS-2018 BS 却立刻将它锁定, 可见高频头的质量无可挑剔。在接收机之前将信号变弱 (模拟非常长的电缆) 也没有影响它的工作质量。

说到这里, 多数重要的接收指标更多的是依赖 LNB 的性能而非接收机。举例来说, LNB 本振的频漂通常比接收机的频漂大些。同样也适于 C/N 比。

该款专业接收机肯定能够

能是复杂的。主菜单有 4 个项目:
 • 频道管理
 • CI
 在进入用户安装子菜单之后, 你能设置所有和转发



频道搜索 |



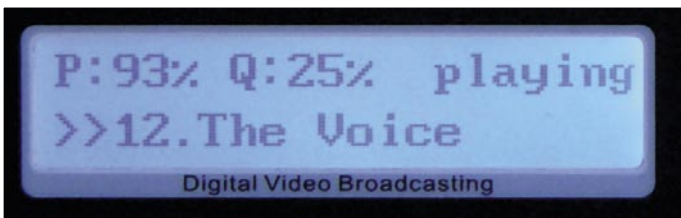
开机界面 |



播放《Pgm1》频道节目 |



信息条 |



播放《声音》频道节目 |

器、LNB 有关的参数。每个操作都是非常基本的。例如, 你除了 LNB 供电方式就不必选择极化方式 (关闭、14 V 为垂直极化而 18 V 为水平极化), 你也可以手动设置 22 KHz 信号的有无。当

进入频率调整的时候, 你就不能像平常那样操作了, 我们没有遥控器和 0~9 按钮。

它以如下列方式工作。当你按下“OK”按钮, 频率的第一个数值便被加亮。借助上/下



Quad



Monoblock



Octo



Twin



AP8-XTS2E



AP8-ST2E

MTI UNIVERSAL SINGLE

Low Phase Noise & High Gain

• Full Ku-Band Coverage

• Low Power Consumption



合揚科技股份有限公司
MICROELECTRONICS TECHNOLOGY INC.

29, rue de Luxembourg L-8077 Bertrange Luxembourg.

E-tronix

Tel: +352 26 44 02 60

Fax: +352 26 44 02 61

info@e-tronix.lu

很好地抵制互调，因为我们向它输入了频率范围很宽的强弱信号，它输出了质量非常高的影像和声音并保持着稳定的水平。我们是赞不绝口。

但这还不是全部。我们很少考虑到接收机软件稳定性。这是前端设备的一个极其重要的指标。

一个非常简单但却有效的软件稳定性测试就是长时间将接收机置于微弱信号条件下（例如整个晚上），仅仅是刚刚处于接收门限之上，大量比特错误存在于接收到的信号中。不是每个接收机都能在

这个测试后幸存下来，我们检查 DVB-2018 BS 后完全有把握地说测试没有失败！

当我们调谐接收机时，并没有多少事情来做。当然，我们可以用带上/下箭头的按钮（间隔少于 2 秒）来调整频道，或用带左/右箭头的按钮来调整音量，当然没有 EPG、喜爱频道目录和通常我们测试普通机器时所有的东西。专业接收机应该只保留转发器调谐及类似设定的功能。你听说过一个商场老板用普通卫星接收机来当作其广播

系统音乐节目源的故事吗？直到第一次停电前它还工作得很好。当来电后，该接收机又开始播放而那声响大得了不得，可当时没有人知道设备间的钥匙放在哪里。你可能想象

得出，专业接收机是不会在停电来电的反复中进入备用模式或改变初始设定的，它应该是尽快地复原到完全相同的以前初始设定状态，而 DVS-2018 BS就是这么做的。

专家结论

+

这是一款运行稳定、结构坚固的接收机。九洲公司提供了外部电缆（ASI BNC-BNC）和适配转换器（XRL到BNC）功能，其有些性能甚至连制造商也没有标出（例如图文电视输出功能和接收SR低于1.5Msps的SCPC节目的能力）。在经历断电后能立即恢复初始设置的状态。



Peter Miller
TELE-satellite
Test Center
Poland

由于具有良好的硬件基础，一些使用者会提出增加一些用于前端的功能，如4:2:2、网络控制和多种音频格式等。

TECHNIC DATA

Manufacturer	SICHUAN JIUZHOU ELECTRIC GROUP CO., LTD, 17th Floor, China Youse Building, 6013 Shennan Avenue Futian District 518040, ShenZhen, Guangdong, CHINA
Webpage	www.jiuzhou.com.cn
Contact	overseas@jiuzhou.com.cn
Tel	+86-816-2468774
Fax	+86-816-2468903
Model	DVS-2018BS
Function	Professional Digital Satellite Receiver with 2 CI slots
Input	DVB-S, MPEG-2, ISO/IEC 13818-1
Input frequency range	950MHz to 2150MHz (DVB-S)
Input signal level	-65 to -25dBm
Symbol rate	2.0 to 45.0 MS/s
SCPC compatible	yes, confirmed from 1.425 Msps
C/Ku compatible	yes, any LOF can be entered manually
Video	ISO/IEC 13818-2, MPEG-2 MP@ML PAL/NTSC (4:3), max resolution 720x576, 1.0Vp-p, 75 ohm
Audio	ISO/IEC 13818-3, MPEG-1 Layer I&II, output: single track, left, right and stereo, balanced and non-balanced
Power supply	87-265 V AC, 50/60 Hz, 35 W max.
Dimensions	480 x 320 x 45 mm
Hardware	Main chip: STi5518BQC, 81MIPS, FLASH: 16Mb, AV SDRAM: 32Mb

TechniSat DigitSim S2

带有两个SIM读卡系统 小巧强悍的卫星接收机



卫星接收机的价格现在是什么可能都有，但是真的好机器却变得比较难找。来自德国的制造厂家 TechniSat 公司一直注重产品、使用简洁，并及时采用最新的硬件技术。最近，我们收到了来自他们数字接收机生产线上最新型的机器：DigitSim S2。

这款高质量接收机制作坚固，而体积则小到可以随身携带。如果配上同样小巧的卫星天线，用 Multytente 系统可接收四个卫星。当你和朋友或者家人度假的时候，它会在野营和旅行时展现精彩。

体积只有 16×10.5×3.5 cm，前面板上两支 LED 灯显示当前的操作状态。

因为它的尺寸小，显然背面没有太多位置，因此 TechniSat 只装有必需的欧插、IF 输入接口及外接 12V 电源插口。

但是 SIM 卡怎么办？还有，因为它太小，DigitSim S2 小得配不上标准的 CI 模块或付费电视卡。因此，TechniSat

选择使用移动电话也采用的最新卡片技术。

许多付费电视供应商已经在提供标准大卡的同时，也提供较小的新式 SIM 卡，如在捷克和斯洛伐克 TechniSat 就有自己的收音机广播套餐。其他的供应商也正在陆续提供较小的 SIM 卡，这个趋势将继续发展下去。

在 DigitSim 系列接收机内建的读卡器支持 Conax 加密系统(DigitSim

S1)，DigitSim S2 支持 Cryptoworks 加密系统。

TechniSat 不负众望，随机的遥控器手感舒适，所有按键标记清楚。最好在手边时常备有新的电池，因为没有遥控器则接收机使用不了。

随机的使用者手册附有详细的信息和众多的照片，可以清楚地解释该机的所有功能，即使是一位初学者也会轻松地使用。

作为附赠，TechniSat 提供了一个能使用收听 120 天 TechniSat 广播的 IC 卡。对于所有欧洲的观众，每月只需很少的费用用该卡就能

收看到 MTV 无极限的电视节目。

日常使用

使用一个操作复杂的机器是一件令人烦恼的事情，买来一个新接收机后花好几个小时来阅读说明书会让人索然无味。

多年来 TechniSat 一直努力消除和避免这种麻烦，对于 DigitSim S2 也不例外。简单易行、令人喜爱的图解式的安装向导让使用者在选择完 OSD 语言后就完成简单的初始安装步骤。使用者可以选择德语、英语、法语、西班牙语、意大利语、土耳其语、



Your world of digital Television & Broadcast



**Technotrend S320 HDMI
RECEIVER FULLHD Upscale**

**NEW!
HDTV S2 H.264/AVC
compatible**

**NEW!
HDTV S2 H.264/AVC
USB 2.0 + CI**

**NEW!
HDTV S2 H.264/AVC
compatible**

Taxfree shopping at:
Dealerprice:

www.dvbshop.net (worldwide shipping)
www.dvbshop.net/dealerprice.pdf

www.dvbshop.net

DVBSHOP Network and Television GmbH
Brehnaer Strasse 18 · D-04509 Neukyhna
Tel: +49 8122 955716 · Fax: +49 8122 955718
E-Mail: hundt@dvbshop.net · Web: www.dvbshop.net

**DEALERS
WANTED!**

Arabic	العربية	www.TELE-satellite.com/TELE-satellite-0711/ara/technisat.pdf
Indonesian	Indonesia	www.TELE-satellite.com/TELE-satellite-0711/bid/technisat.pdf
Bulgarian	Български	www.TELE-satellite.com/TELE-satellite-0711/bul/technisat.pdf
German	Deutsch	www.TELE-satellite.com/TELE-satellite-0711/deu/technisat.pdf
English	English	www.TELE-satellite.com/TELE-satellite-0711/eng/technisat.pdf
Spanish	Español	www.TELE-satellite.com/TELE-satellite-0711/esp/technisat.pdf
French	Français	www.TELE-satellite.com/TELE-satellite-0711/fra/technisat.pdf
Greek	Ελληνικά	www.TELE-satellite.com/TELE-satellite-0711/hel/technisat.pdf
Croatian	Hrvatski	www.TELE-satellite.com/TELE-satellite-0711/hrv/technisat.pdf
Italian	Italiano	www.TELE-satellite.com/TELE-satellite-0711/ita/technisat.pdf
Hungarian	Magyar	www.TELE-satellite.com/TELE-satellite-0711/mag/technisat.pdf
Mandarin	中文	www.TELE-satellite.com/TELE-satellite-0711/man/technisat.pdf
Dutch	Nederlands	www.TELE-satellite.com/TELE-satellite-0711/ned/technisat.pdf
Polish	Polski	www.TELE-satellite.com/TELE-satellite-0711/pol/technisat.pdf
Russian	Русский	www.TELE-satellite.com/TELE-satellite-0711/rus/technisat.pdf
Turkish	Türkçe	www.TELE-satellite.com/TELE-satellite-0711/tur/technisat.pdf

瑞典语、葡萄牙语、俄语、希腊语、波兰语、捷克语、匈牙利语和荷兰语,你会找到你所需要的。

在选择声音的语言之后,你会被询问你的位置,然后再进行一些基本的设定,如选择夏令时间或标准时间。

为使接收机在两者之间自动地转换,它需要知道所在国家和时区。国家的选择决定如何进行自动频道分类和目录更新,国家明细分类位于频道目录的顶端。

天线设置菜单存有欧洲最受欢迎的两个卫星: 19.2° E 的 ASTRA 和 13° E 的 HOTBIRD。如果你对其他的卫星感兴趣或需要输入 DiSEqC 参数,可以直接进入安装助手菜单来手动输入。

它可以接收 Ku 波段双本振 LNBF, TechniSat 自己的 Multytenne 系统可以接收 4 个卫星, Disicon 单一线缆解决方案也能使用。即使是特殊的 LNB 本振也没有问题,可以采用手动的办法。如果你

碰巧有一个 DiSEqC 马达,那就算你有运气,它支持 DiSEqC 1.2 和 1.3 (USALS) 协议。

初始安装的最后项是通过卫星搜寻软件更新。DigitSim S2 会讯问使用者

是搜索所有的频道还是加密的频道。

如果你真的想要它容易些,你只需选择 ISIPRO 就行,这是 TechniSat 的自动频道更新系统。在这个模式中,只需点击一下,接收机就会通过卫星下载一份精心准备好的频道目录,并将会自动更新以保持最新状态。

在安装过程中如果选择了一个特定的国家,那么频道目录将会作出相应的安排。举例来说,奥地利人总会寻找 ORF

节目,而瑞士人总是在目录的顶端寻找 SF 频道。

接收机现在可以使用了。如果有任何特别的设定需要做,比如音频/视频的输信号或复杂的 DiSEqC 参数,稍后可以通过六种主菜单来处理。

虽然没有 YUV 和 S 视频端口,但 DigitSim S2 支持 CVBS 和 RGB。试想,谁会在他们的露营车中安装一个电视

它可以在稍微超过八分钟的时间里完成 80 个卫星转发器的扫描。很显然,在这里没有打破速度的记录,但是它仍然在可接受的范围中。另一方面,ISIPRO 系统不需要使用者先进行人工的扫描,而是提供了一份最新的频道目录,它包含了所有最重要的频道。对于富有经验的使用者,当然可以进行 PID 扫描。

如果你对 ISIPRO 系统的

发射系统或一架平面电视呢? 该接收机可以接收 PAL 和 NTSC 制式图像信号,接收美国的影像传送也不成问题。

遗憾的是预置的卫星目录只包括 20 个欧洲的卫星,再增加 13 个卫星只能用手动的办法。

TechniSat 给这款小小接收机提供了存储 4000 个频道的充足空间。如果 DigitSim S2 驱动一个 DiSEqC 马达,那么你会用到频道记忆功能。

优点不感兴趣,那你可以采取多种形式自行分类、编辑。可以将流行的频道编入喜爱频道目录,别的频道也能移出或删除。编辑功能可以将电视和收音机频道目录分开,这样一来更有条理,也更清楚。

这款接收机的另一个亮点是它可以在特定的时间通过卫星自动下载 EPG 信息。这样,当你,想要看这些信息的时候,你就会立刻看到而不必等候很长时间。对于使用者,明显的好处在于不管当



主菜单 |



卫星目录 |



接收 36° E 的 EUTELSAT 卫星上 SCPC 信号 |

时在播放什么频道,所有 EPG 信息都可以同时下载而毫不影响,举例来说,就是用遥控器上的一个按键就可以提前预选节目单。

即使在正常的电视模式中,这款小巧的 TechniSat 接收机表现也很出色。在按下“OK”按键之后,一个编排精致的频道目录就显现出来,而预览窗口则显示该频道现在的 EPG 信息。目录按照喜欢

频道或节目供应商分类。

不同转发器上的两个频道之间的切换时间明显少于 1 秒。在每个频道切换后,信息条上就会显示出该频道的 EPG 信息及附加信息(图文电视信息、AC3、声道、副标题,等等)。

按两下“OK”按键,就会显示出节目供应商所提供的所有 EPG 信息。

使用遥控器上的“SFI”按键,可以启动 EPG (电子节目向导),同时显示出当前

频道及预置的 12 个频道信息,如果需要,还可以显示一个频道的各个节目信息。你也能从 EPG 中设定定时器,这样一来你就绝对不会错过喜爱的节目。

TechniSat 内建的高频头在我们的测试中表现出了良好的灵敏度,而且接收 C/N 值为 4 到 5 个分贝之间的较弱信号也没有问题。

接收机在接收 SCPC 信号

时表现出了它最好的一面: 我们测试了 36° E 的 EUTELSAT SEASAT 卫星转发器上符码率为 1.628Ms/秒的信号,效果流畅,即使是制造厂家承诺的最

低规格也只有 2Ms/秒。借助于较快的图文解码器, DigitSim S2 的完美画质有了更进一步的提升。还有,简单易用的童锁功能也很不错。



Expert Conclusion



+
The operation of the DigitSim S2 from TechniSat is clearly and logically arranged making it easy to use even for newcomers. The family-friendly living room receiver proves itself with its well thought out features and reliable functions. Its small size makes it perfect for use in RVs or for your weekend cabin in the woods. It slips easily into your pocket so you can take it anywhere. We especially liked its excellent sensitivity and its fast channel switching speed.

-
Its available channel memory could stand for improvement; 4000 channels for a CI receiver with DiSEqC motor support might not be enough.

TECHNIC DATA

Manufacturer	TechniSat Digital GmbH, 54550 Daun, Germany
Tel	+49-(0) 65 92 / 712-600
Fax	+49-(0) 65 92 / 49 10
Website	www.technisat.com
Model	DigitSim S2
Function	Digital CI Satellite Receiver
Channel Memory	4000
Satellites	33
Symbol rates	2-45 Ms/sec.
SCPC Compatible	yes, 1.628 Ms/sec in our tests
USALS	yes
DiSEqC	1.0 / 1.2 / 1.3
Scart Connectors	1
Audio Connectors	no
UHF Modulator	no
0/12 Volt Output	no
Digital Audio Output	no
EPG	yes
C/Ku-Band Compatible	yes
Power Supply	180-250 VAC / 50 Hz via Power Supply; 12V / 1.6A direct



SFI EPG 概览 |



频道的EPF 信息 |



DiSEqC马达设置 |

Technotrend TT-micro S320

通过 HDMI 传输视频

过去,从接收机到电视传输的一直是模拟视频或颜色信号。2003年,HDMI(高品质多媒体接口)的规格被明确定义,它允许任何兼容装置输出的音视频信息进行完全的数字传输。这项革命性技术在日常生活的应用日

益广泛,特别是由于“准高清”电视机已能够处理HDMI信号。因此,如果高端DVB机顶盒能够接收高清电视,则信号就要用高清电视标准经过HDMI传送到电视机。Technotrend现在就将这种技术以低成本投入使用。

道,你就需要相应的IC卡,还需要在接收机的CI位置插入CI模块。

作为出厂默认状态,接收机预先设定了18个卫星的转发器数据。然而,由于接收机



不可否认,只有卫星接收机才能收到MPEG-2标准的频道,这就意味着新的更高的协议-正处于测试阶段的MPEG-4信号现在还不可能出现在你的电视屏幕上。然而,即使画质一般的PAL制信号也正在改善以接近真正的高清电视水平。

为了要做到这点,Technotrend使用一种叫做“upscaler”的技术,这是一个将现有PAL制的625行模拟成1080行的算法系统。采用这种技术,明显看得见的扫描线(绝大多数LCD屏幕都有)消失了,而图像看起来变得更清晰。

由于它具有未来适用的技术,所以我特别地喜欢这一款接收机,即使它有一些局限性。除此之外,它很小巧,而且轻,不消耗过多的能源。由于它采用12V直流供电,还便于轿车或旅行车使用。非常低的信号门限使它成为旅行中理想的朋友。

在电视和广播之间的切换也非常迅速并且没有任何的图像扭曲,这就是称得上高级操作系统的证明。通过ASTRA1卫星可迅速进行软件升级和下载。每当选择一个新的频道,关于当前节目和下一个节目的信息就会在屏幕

上显示出来,并有相关的内容介绍。

它没有说完整的EPG(电子节目指南)具有长期模式,也就是说你只可以上溯一星期以前查阅节目信息,并可在EPG模式下直接设定定时器。

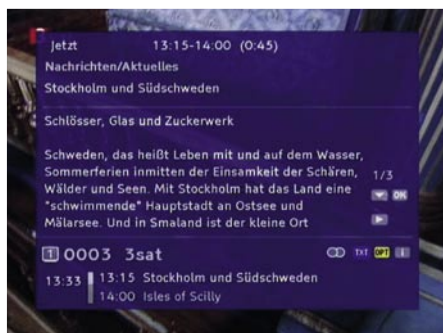
做为一项附加的性能,图文电视非常完整,它储存了所有被选择过的页面,这使任何挑选过的页面能够立刻显示出来。

完整的信号搜寻可以很快地完成,也可以选择限定搜寻免费节目、加密节目或所有节目。如果你想要接收加密频

只使用DiSEqC 1.0协议和脉冲控制,你受到限制而只能在单一LNB、双卫星或四卫星多馈源系统这三种模式中选择。你不能把一个极轴天线连接到这款接收机上。



全部频道目录/喜爱频道目录 |



卫星3节目指南 |



节目浏览 |

Arabic	العربية	www.TELE-satellite.com/TELE-satellite-0711/ara/technotrendHDMI.pdf
Indonesian	Indonesia	www.TELE-satellite.com/TELE-satellite-0711/bid/technotrendHDMI.pdf
Bulgarian	Български	www.TELE-satellite.com/TELE-satellite-0711/bul/technotrendHDMI.pdf
German	Deutsch	www.TELE-satellite.com/TELE-satellite-0711/deu/technotrendHDMI.pdf
English	English	www.TELE-satellite.com/TELE-satellite-0711/eng/technotrendHDMI.pdf
Spanish	Español	www.TELE-satellite.com/TELE-satellite-0711/esp/technotrendHDMI.pdf
French	Français	www.TELE-satellite.com/TELE-satellite-0711/fra/technotrendHDMI.pdf
Greek	Ελληνικά	www.TELE-satellite.com/TELE-satellite-0711/hel/technotrendHDMI.pdf
Croatian	Hrvatski	www.TELE-satellite.com/TELE-satellite-0711/hrv/technotrendHDMI.pdf
Italian	Italiano	www.TELE-satellite.com/TELE-satellite-0711/ita/technotrendHDMI.pdf
Hungarian	Magyar	www.TELE-satellite.com/TELE-satellite-0711/mag/technotrendHDMI.pdf
Mandarin	中文	www.TELE-satellite.com/TELE-satellite-0711/man/technotrendHDMI.pdf
Dutch	Nederlands	www.TELE-satellite.com/TELE-satellite-0711/ned/technotrendHDMI.pdf
Polish	Polski	www.TELE-satellite.com/TELE-satellite-0711/pol/technotrendHDMI.pdf
Russian	Русский	www.TELE-satellite.com/TELE-satellite-0711/rus/technotrendHDMI.pdf
Turkish	Türkçe	www.TELE-satellite.com/TELE-satellite-0711/tur/technotrendHDMI.pdf

频道储存在两个目录里，其一包括所有的电视频道和所有的广播频道。按照一个普通德国观众的想法，每个目录里的频道应该这样安排，即在德语国家中大多数观众接收的 ASTRA1 频道，这样观众将会感到满意。

事实上在总目录里不能重新排列频道可能会惹恼一些使用者，但是做为补偿还有 4 个喜爱频道目录，它们可以分



别存放你心目中喜爱的电视和广播频道。

首先，让一些使用者不快的原因确实是由于性能的缘故，其次，合乎逻辑的原因在于前面板上真的缺乏控制按

键，因为安装 CI 插槽和 LED 状态指示灯以后已经没有空间了。

后面板则很相似：除了 LNB 和电源插座之外，只有模拟和数字(更重要)的音视频输出



Systeminformation	
Hauptmenü / Technische Informationen	
Hardware-Version	000F 0014 13C2 000B
Systemschlüssel	0000-0001 / FFFF-FFFF
MAC-Adresse	nicht verfügbar
Produkt	TechnoTrend TT-micro® S320
Software-Version	1.65.02 / Jun 27 2007 09:03
Software-Aktualisierung	OK

系统信息 |

Programminformation	
TV * 0004 Bayerisches FS - MPEG2	
Satellit	Astra (19,2°E)
Transponder	11836 MHz - H - 27500
Netzwerk	0001 ASTRA
Anbieter	ARD
Service-ID	28107 Audio-PID 202
Teletext-PID	204 Video-PID 201
Signalstärke	13,0 dB 65%
Signalqualität	0.00e+00 100%

节目信息 |



切换后的信息条 |

TECHNIC DATA

Distributor	DVB-Shop, Deutschland
Tel.	+49-34954/31960
Fax	+49-34954/49233
Website	www.dvbshop.net
E-Mail	webmaster@dvbshop.net
Model	TT-micro S320 HDMI
Power Supply	12 V DC or 230 V AC
Power Consumption	10/11 Watt (Stand-By/Off)
Size	25x17x3,5 cm
Weight	650 g
DiSEqC	1.0 and Toneburst
Satellites	max. 4 of 18
RF-Modulator	No
Program Listings	TV, Radio, Favorites
Teletext	800 Page Memory
EPG	Day, next day, week with program details
Timer	EPG-programmable On/Off
Connectors	IF In, 2xSCART, 2xRCA, S/PDIF, HDMI, Power Supply
Upgrades	Via Satellite

专家结论

这是一款小巧的低成本接收机，但是它却拥有标准接收机的所有性能。

+

由于具有 HDMI 功能，图像完美的频道切换快速的图文

-

总频道目录不能编辑不适用于极轴天线



Heinz Koppitz
TELE-satellite
Test Center
Germany

Horizon HDSM USB PLUS

“傻瓜都会使用它”

坦白地说,看见它的时候,我们都被逗乐了。这是什么呀?它太小了——还没有小猫的一半大(见照片)。就好像你在DIY电子商店买了一个前面板上只有箭头按钮的东

西一样,而且还是黄色的! 我们想:“不,这不可能真的有用处——也许只是一个为那些玩卫星天线不计时间的业余爱好者们准备的玩具吧...”事实上是我们错了!

《国际卫星电视》编辑的这只小猫使地平线公司这款新型的 HDSM USB PLUS 显得更加小巧了

带着满腹疑问,我们开始检查配件。皮包里有一段带子可以将它挂到你的脖子上或腰间。皮包上有些孔洞,可以用来穿入电缆线、汽车电源、USB线或电源线(所有的这些

都在包里)。它还有内置的电源! 也就是说没有了那些插来插去的头痛问题。若不算电源部分,HDSM USB PLUS 一点也不重。每一件都配有“维可牢”钩毛搭扣带来固定,因而在日常的使用中很实用。

我们先得给蓄电池充电。制造厂商在使用手册中清楚地

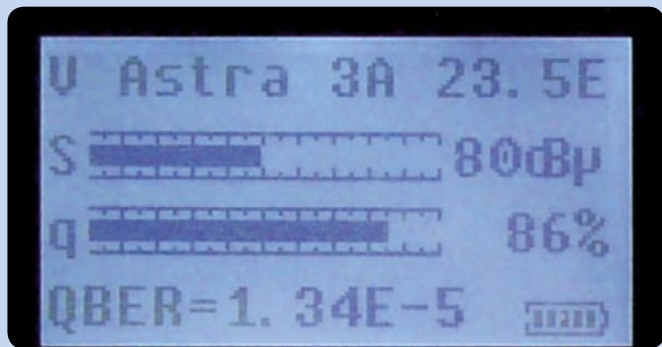
说明它还没有充电。在充电期间,仪器向我们显示电池已充电量的百分比。另外值得一提的是其充电电路,你可以将其闲置一段时间而不必担心电池出现问题。虽然手册推荐第一次充电要连续充满 24 小时,但我们注意到在大约1.5小时之后,蓄电池电量显示已由 10% 达到了 100%。当

然,我们无法尝试让该仪器再等候 24个小时,于是在充满电后就开始测试了。

操作仪器可不简单。你将电缆从 LNB 连接到 F 头输入端,打开仪器,用带箭头的按钮选择你天线想要对准的卫星。现在,你可以转动你的天线直到你听到仪器发出声



HORIZON did a wonderful job in giving the installer all data he needs with a simple push of a button:



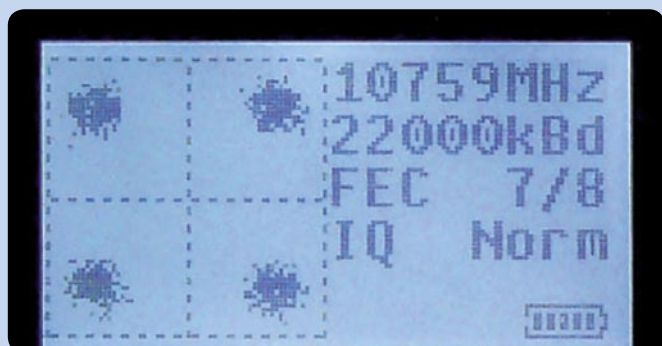
信号强度和纠错前的 BER



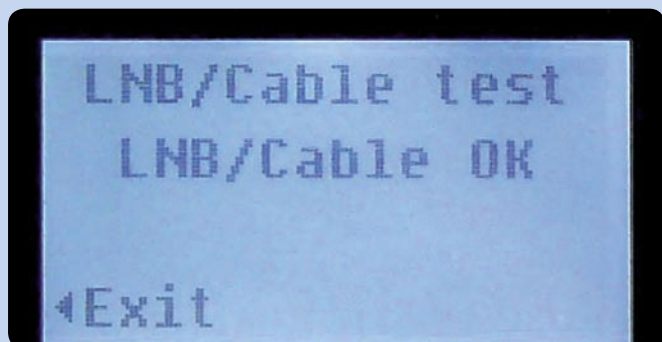
噪声比和过去的 Viterbi 算法 BER



频谱



星座图



LNB/有线电视测试

Arabic	العربية	www.TELE-satellite.com/TELE-satellite-0711/ara/horizon.pdf
Indonesian	Indonesia	www.TELE-satellite.com/TELE-satellite-0711/bid/horizon.pdf
Bulgarian	Български	www.TELE-satellite.com/TELE-satellite-0711/bul/horizon.pdf
German	Deutsch	www.TELE-satellite.com/TELE-satellite-0711/deu/horizon.pdf
English	English	www.TELE-satellite.com/TELE-satellite-0711/eng/horizon.pdf
Spanish	Español	www.TELE-satellite.com/TELE-satellite-0711/esp/horizon.pdf
French	Français	www.TELE-satellite.com/TELE-satellite-0711/fra/horizon.pdf
Greek	Ελληνικά	www.TELE-satellite.com/TELE-satellite-0711/hel/horizon.pdf
Croatian	Hrvatski	www.TELE-satellite.com/TELE-satellite-0711/hrv/horizon.pdf
Italian	Italiano	www.TELE-satellite.com/TELE-satellite-0711/ita/horizon.pdf
Hungarian	Magyar	www.TELE-satellite.com/TELE-satellite-0711/mag/horizon.pdf
Mandarin	中文	www.TELE-satellite.com/TELE-satellite-0711/man/horizon.pdf
Dutch	Nederlands	www.TELE-satellite.com/TELE-satellite-0711/ned/horizon.pdf
Polish	Polski	www.TELE-satellite.com/TELE-satellite-0711/pol/horizon.pdf
Russian	Русский	www.TELE-satellite.com/TELE-satellite-0711/rus/horizon.pdf
Turkish	Türkçe	www.TELE-satellite.com/TELE-satellite-0711/tur/horizon.pdf

音然后再观察信号强度和质量的读数。如果你什么也没找到,提高或降低天线的仰角后再开始转动它。在测试过程中,你最多只要一分钟就能找到需要的卫星。在我们的测试中,它用了我们不过 5~15 秒的时间。当然,我们已经有了些经验,知道卫星大致在哪里,还有仰角大约为多少。

有时当你旋转你的天线角度稍大时,最好是观察这个仪器 - 而不只是等候“成功的声音”。当你注意信号强度增加时,你可能想要开始调整 HDSM USBPLUS 到其他的卫星(用左右箭头按钮)上,直到你的天线准确地对准了它。这样一来,它给了你一种明确的想法想要转动它从东到西把天上的卫星都找遍。

它存储了 32 个卫星上的 64 个转发器数据(每个卫星 2 个转发器:一个水平极化,一个垂直极化)。另外,你能手动进入其它的转发器,即你安装中最注意的那一个。此时,你要注意其 LOF 的选择范围是非常宽的,包括 C、Ku 和 Ka 波段。

我们也在问我们自己 HDSM USB PLUS 是否“知道”在我们本地哪一个转发器可以用来识别卫星?我们都知道,在世界不同地区,会接收到不同的卫星。即使在不同的位置也可以接收相同的卫星,而通常你在一个地方接收的是一个波束,而在另外一个地方则接收到的却是其它波束。这意味着即使接收相同的卫星,而在英国、西班牙或波兰却需要识别不同的转发器。我们

在手册里没有发现相关的解释,因此我们登录对地平线公司的网页(www.horizonhge.com)。而后,怎么做就很清楚了。该仪器针对不同国家设定了不同的转发器。换句话说, HDSM USBPLUS 的记忆中储存了不同的转发器参数,当它卖到英国和卖到波兰时机器里存储的数据是不一样的。事实上,在该公司的下载区里,我们发现了 14 个不同的地区,包括俄国、巴西和中国等。我们知道,凭我们的经验要为一个特别的位置(国家)选择正确的转发器需要付出许多时间和努力。地平线公司替我们做到了,谢谢他们!

当该仪器发现了需要寻找的卫星,它会发出一个短的声音,同时在信号强度的信息条下,它会显示出信号质量的百分比。在两个信息条下面,我们还能见到频道的 BER 数值显示(QBER),这是 Viterbi 算法错误纠正之前的 BER。通常, QBER 应该低于 1.0×10^{-2} , 否则我们可能观察到影像的扭曲。

我们可以切换仪器开关来显示另外的数值。即将信号强度、信号质量和 QBER 改为 C/N 比、用百分比显示的过去的 Viterbi 算法质量及 Viterbi 算法 BER 数值(VBER)。VBER 并不很实用(它会从非常坏的数值快速地跳跃到非常好的数值), C/N 比可用来比较不同的天线装备。举例来说,你可以看看插入一个复合开关对于接收系统 C/N 比的影响。

除了这些模式之外,该仪器还可能显示频谱图。当调整

天线的时候,这种图对于搜索微弱信号特别有用。在频谱模式中,我们可以改变下列步长(用上/下箭头按钮): 60、120、240、480、960 和 1200 Hz和中心频率 (用左/右箭头按钮)。

对于偏爱图解式评估信号质量而不喜欢数字显示的人来说,该公司用 HDSM USB PLUS 提供了另外一种模式,这就是 QPSK 星座图。象限里连线的点越多,信号质量越好(噪声少)。

在这只小猫“1/4”的体积里,地平线公司设法装进了更多的东西。你可以将 HDSM USB PLUS 连接到 DiSEqC 开关之后再使用仪器菜单,你就能够选择 A、B、C 或 D 卫星。如果不确定哪个是有线电视哪个是 LNB,运行 LNB/有线电视测试,该仪器将会发现短路和开路(没有耗费对 LNB 的供电)。

对于专业人士而言,最重要的是记录测量结果的能力。HDSM USB PLUS 可以通过 USB 口重新编程(从它的名字就明确知道怎样做),为此,我们要升级到新版软件,下载记录过的数值或上传转发器的设定,于是我们决定为该仪器升级。

我们做了一些测量,通过与另外的一个仪器比较来看它的准确性。我们发现了多达 1



待用:可以轻松提起仪器的带子,位于顶端

个分贝的信号强度差异。注意,HDSM USBPLUS 读取的是来自于真实精密的数字 Q+I 数值,其他的仪器可能使用模拟信号来源,造成了它们的数据解析和读取可能不同于 HDSM USB PLUS。

当它告诉你某一天线比另一个要好的时候,你可以完全信赖这款仪器。你可以确信使用 HDSM USB PLUS 对准的天线是最佳的状态,前提是你有足够的耐心用它来调整好天线的仰角、方位角和 LNB 极化角。

专家结论



Peter Miller
TELE-satellite
Test Center
Poland

该仪器小巧轻盈。而且很多重要性能指标使用 HDSM USB PLUS 都可以轻松获得。我们未曾想象生产厂家能够提供如此使用简易但却具备全部功能的仪器。干得棒极了!不要苛求其玩具似的外观,它真的是一款非常实用的仪器。DVB-S2不久将面世,读取 MER 的功能将通过软件升级来提供。

地平线公司应当使锁定转发器的声音再大些。

TECHNIC DATA	
Manufacturer	Horizon Global Electronics Ltd.
Fax	+44 (0) 1279 417025
E-mail	sales@horizonhge.com
Web page	www.horizonhge.com
Model	HDSM USB PLUS
Function	Antenna alignment meter
Input frequency	950~2150 MHz
C/Ku-Band compatible	Yes (DVB-S)
Signal level	-65 dBm to 25 dBm
Symbol Rate	1~45 Msps
LNB supply	250 mA nom., 500 mA max.
Number of pre-programmed satellites	32 (horizontal & vertical polarization)
Power supply	100~240 V, 50/60 Hz, 0.31A max. 12 V DC, 0.8 A max.
Operational time when fully charged	5 hours typ.



连接到汽车充电器或 USB 口,接口在背面。

THE BEST SAT MOTOR



Stab



ITALY

Stab - USALS

**UNIVERSAL SATELLITES
AUTOMATIC LOCATION SYSTEM**

3 YEARS WARRANTY

HH90

HH100

HH120

EASIEST TO INSTALL! EVERYTIME!

**ONLY STAB USALS® MOTORS
WITH MAXINTELLIGENCE™**

**PRECISION CALIBRATION:
GO TO THE SATELLITE
ACCURATELY EVERYTIME!**



STAB S.r.l.

Via Seminiato, 79

44031 Ambrogio (Fe) - ITALY

Tel. +39 0532 830739

Fax +39 0532 830609

www.stab-italia.com

www.stab-usals.us

info@stab-italia.com

Eycos S80.12 HD

首款高清卫星电视 PVR 接收机

不管是 Anga、Cabsat, 还是 Cebit, 这些天在消费电子产品展览会上的主题就是高清电视, 而带 CI 的机顶盒则已是去年城镇里的话题。不过, 今年厂家们又向前迈了一大步: 他们将新型高清卫星电视 PVR 接收机呈现给了惊奇的观众。

首批厂家中的一家公司已经在他们的产品线中增加了这种机型, 这就是大有前途和希望的韩国 Eycos 公司, 他们经过合作试验, 已经通过了德国卫星节目和欧洲市场的测试。

当然, 当第一个 S80.12 高清系列的机顶盒从装配线上

开机后, 9 位蓝色的数字字符显示窗被点亮了, 7 个银色按键装在黑色的前面板上, 构成了完美的外表。

通常, 这种产品的用户被建议为遥控器准备好电池, 因为机器上的按键只能用来运行有限的数字操作。两个 CI 插槽被隐藏在前面板右边的仓盖后面, 它能运行所有标准



HDMI接口, 给人留下深刻印象的还有 USB 2.0 和 S-ATA 接口。

对我们来说, 后面 USB 2.0 接口的用途很清楚, 不过, 你们大部份或许会问 S-ATA 接口做什么目的呢? 答案真的相当简单: 作为首批 PVR 厂家之一的韩国 Eycos 公司已经认

500 GB 的 Freecom 牌外接硬盘

计算机上常常是很麻烦的一件事, 因为往往个人计算机会在另外一个房间里, 且连接时需要很长的线缆。

第三, 许多人喜欢带着他们还没有制成 DVD 的录像到朋友那里看或者节假日在家里看。所有这些理由都明确地指向一个清楚的解决办法, 这就是外接硬盘。



下来直接放在我们编辑部的时候, 我们寄予了很高的期待。当我们打开包装后, 所有的同事礼物都只认为只是还可以。后来, 厂家的一个人决定除掉面板上那些炫耀诸如内含 DiSEqC、MPEG 和 DD 等性能的贴签。我们并不欣赏这种做法, 因而也希望其他的制造厂商不再采用这些“时髦”而又浪费的设计。

的 Irdeto、Seca、Viaccess、Conax、Cryptoworks 和 Alphacrypt 等CA模块。

如果前面板让你心动的话, 那么后面板或许会让你吃惊。除了通常都能被猜到的一进一出高频头接头、数字声音输出、欧插、RCA 立体声音视频插座和 YUV, 当然, 对于高清电视接收机, 它还有

识到这样的事实, 即硬盘接收机将是完美的解决方案。

首先, 消费者在买机器的商店里就不得不就决定其硬盘的容量大小, 而且以后更换硬盘不再是一件费神的事情, 还需要指定的经销商要确保承诺不变。

第二, 为了要传输数据而把一个接收机连结到一个人

Eycos 了解消费者需要的是什么, 外接硬盘可以和他们的装置连接, 无论是 USB 2.0 接口还是 S-ATA 接口。

你甚至可以把硬盘同时连结到两个接口上, 每次当你开始录像或设定定时录像时, 接收机将会询问使用哪一个硬盘。交换硬盘而且把数据转移到一台个人计算机



THE 04 SATELLITE TV SYSTEMS FROM SEA TEL. QUALITY YOU CAN ACTUALLY TOUCH.



Imagine, single touch control for satellite TV. Sea Tel's 04 Series TV-at-Sea sports an intuitive new touch screen, locking in signals with a feather touch. Whisper-quiet, the 04 Series' "super dish reflector" pushes the edge of your satellite coverage further offshore. It's just one in a family of products that insure wherever you cruise, whatever size your vessel, there's a high-performing Sea Tel perfect for you. As the leader in satellite communications at sea for more than two decades, Sea Tel stands alone. Doesn't your boat deserve the best? Don't you deserve a Sea Tel?

The 04 Series features 30" to 50" systems with an industry-first touch screen control.



Look to the leader. Look to Sea Tel.

A Cobham Company

Sea Tel, Inc. 925.798.7979 www.seatel.com Sea Tel Europe +44 2380 671155

已经成为区区小事,甚至一个容量足够的 USB 盘也可以插到 USB 接口上,所以你的裤兜里也可以存放好几个小时的录像。

也可以用一个 USB 盘来更新接收机的操作系统,所以 RS-232 接口多数时间将会闲置。

我们测试的机器带有一个外接的 Freecom 牌 500GB 硬盘,它有一个独特的优点,即一旦接收机进入待机状态它就关机。

从设计的观点看,S80.12 HD 前面板上LED 的蓝颜色是非常可取的。

随机还带有 USB 延长电缆,可以外连 USB 装置而不必在接收机的背面接口缀上什么装置,他们想得很到位。

Eycos 接收机的工艺正如我们期待的那样精湛,而遥控器也使用灵敏,可能会有一些使用者认为它大了一点点。所有的按键都有清楚的标注,

即使是初学者也立刻就能使用它。

我们测试机器的操作手册是德语的,充满整洁而详实的风格,贴签上标明包含了所有必需的数据。

日常使用

毫无疑问,Eycos S80.12 高清电视卫星接收机是面向欧洲市场的,因此它预置了所有欧洲国家能够接收到的频道也就不足为奇。频道目录包括了19.2° E ASTRA、13° E HOTBIRD 和 42° E TURKSAT 等卫星的最新参数。

Eycos 接收机在商店正式面市的时候,已经承诺增加 23.5° E ASTRA 3A 和 28.2° E ASTRA2 两个欧洲上空的卫星,上面有一些高清电视频道。从制造厂商的网站 www.eycos.de 上可以得到更新的频道目录。

按动“菜单”按钮,你会感

到惊讶,因为 Eycos 已经设法赋予了新型的 S80.12 HD 许多性能并分布在四个漂亮的菜单区域。

第一个区域处理天线配置和频道目录。很重要的是列出了 175 个欧洲、亚洲和美国的卫星,然而目录并不是最新的,需要做一些修订。制造厂商已经答应解决这一个问题并在正式销售开始之前提供更新。

接收机能够接收 C、Ku 波段信号,而且由于有了手工的 LOF 设定,即使再奇特的 LOF 也不会出现问题。你可以用新型 Eycos 接收机选择使用 DiSEqC 或多馈源天线,因为它具有 DiSEqC 1.0、1.2 和 1.3(USALS) 功能。唯一缺少的是 DiSEqC 1.1。

说起优点,接收机信号扫描的时间是非常快的。四分半钟内它可以完全扫描一个有 80 个转发器的卫星,大概这是它为这个工作创造的一项新记

录吧。最主要的是它能记忆 6000 个频道,对于大部分使用者来说应该是足够的。

第二个菜单区域是帮助使装置个性化,从选择 OSD (英语、法语、德语、西班牙语、意大利语、俄语、土耳其语、荷兰语、捷克语和波兰语)语言到设定前面板的 LED 显示,包括所有的 OSD 设定。

值得一提的是 AC3 声音的自动识别。由于有了这个功能,使用者的 DD 5.1 家庭影院系统就不必用手选择杜比数字声音了,这件工作完全由接收机承担。

借助欧插,S80.12 HD 的 AV 设定可以选择清晰度参数(576p、720p 或者 1080i)、彩色电视制式(PAL 或 NTSC)和 CVBS 或 RGB 信号类型使接收机和电视机连接起来。

当然,你也可以定义你电视的显示比例为 4:3 或者

Download this report in other languages from the Internet:

Arabic	العربية	www.TELE-satellite.com/TELE-satellite-0711/ara/eycos.pdf
Indonesian	Indonesia	www.TELE-satellite.com/TELE-satellite-0711/bid/eycos.pdf
Bulgarian	Български	www.TELE-satellite.com/TELE-satellite-0711/bul/eycos.pdf
German	Deutsch	www.TELE-satellite.com/TELE-satellite-0711/deu/eycos.pdf
English	English	www.TELE-satellite.com/TELE-satellite-0711/eng/eycos.pdf
Spanish	Español	www.TELE-satellite.com/TELE-satellite-0711/esp/eycos.pdf
French	Français	www.TELE-satellite.com/TELE-satellite-0711/fra/eycos.pdf
Greek	Ελληνικά	www.TELE-satellite.com/TELE-satellite-0711/hel/eycos.pdf
Croatian	Hrvatski	www.TELE-satellite.com/TELE-satellite-0711/hrv/eycos.pdf
Italian	Italiano	www.TELE-satellite.com/TELE-satellite-0711/ita/eycos.pdf
Hungarian	Magyar	www.TELE-satellite.com/TELE-satellite-0711/mag/eycos.pdf
Mandarin	中文	www.TELE-satellite.com/TELE-satellite-0711/man/eycos.pdf
Dutch	Nederlands	www.TELE-satellite.com/TELE-satellite-0711/ned/eycos.pdf
Polish	Polski	www.TELE-satellite.com/TELE-satellite-0711/pol/eycos.pdf
Russian	Русский	www.TELE-satellite.com/TELE-satellite-0711/rus/eycos.pdf
Turkish	Türkçe	www.TELE-satellite.com/TELE-satellite-0711/tur/eycos.pdf

16:9,以使接收机通过 HDMI 传送正确的信号格式。此外,内置的时钟可以用手动调整,或与卫星数据同步。

PVR 的主要功能之一是具有通过设定定时器来记录一个特定事件的可能性。在这里 Eycos 机顶盒与定时器和闹钟具有一定区别。

设定闹钟只是将接收机在设定的时间打开一个挑选好的频道,而定时器则是使接收机于指定时间在硬盘上录下挑好的节目。总之,可以定义 30 个定时器,而真正的定时器也会羡慕它能够每天或每周的事情事先都预置好。

最后两个菜单区域专门处理任何插入的 CI 组件,还有外接硬盘的两个接口。就像 IE,你可以直接找到外部 USB 或 S-ATA 硬盘的地址。新的目录可以通过某一按键的触动产生,而录像也能删除、移动或重新命名。新的磁盘可以被格式化,而现有磁盘的数据可以随时检查。

可以轻易地看到一个按键标着“上传频道”,而它代表的功能在许多卫星接收机用户梦寐以求的,只要简单地按下此按钮,当前的频道目录就被传送并储存在硬盘上。

一方面这在很大程度上有

利于频道目录的编辑,而另一方面,这个功能有利于在频道搜寻或系统重新设定后生成频道目录的备份。

因为新的频道在大约 1 秒之后在屏幕上出现,所以用 S80.12 HD 在频道之间快速切换真的很有趣。即使在高清电视和标清电视之间切换,我们也没有看到任何过分的延迟。

如果你想要手动开始新的录制,你所需要做的只是按下录制按钮。为防万一两个硬盘同时都录上,接收机会问你

喜欢使用哪一个。因为新的 Eycos 机顶盒只装有一个高频头,所以你只能收看到同一转发器上传的频道或录制好的一个频道,而且一经开始录制你只有等待结束才能转到其他的频道

在录制高清电视频道期间,即使我们真的努力尝试也不能改变接收机的状态。所有的录像都将光鲜地而且没有任何失真地重放。

Eycos 所用的高频头真是物有所值,即使我们在维也纳的一个极限测试位置接收 7° W NILESAT 卫星的一个弱信号时也没有遇到任何困难。在慕尼黑的另外一个测试位置接收英国广播公司的高清电视也没有任何问题。

当 S80.12 HD 接收到并

处理了符号率低至 1.6 Ms /s 信号的时候,也就通过了我们的 SCPC 测试。其接收

符号率在 10 和 32Ms/s 之间 DVB-S2 信号也没有任何问题。

专家结论



Thomas Haring
TELE-satellite
Test Center
Austria

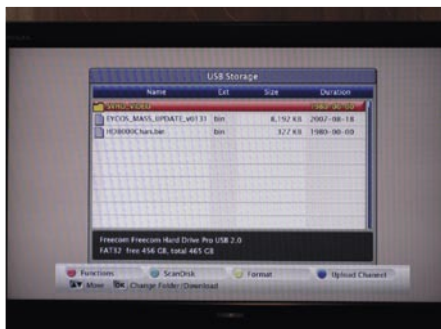
+

Eycos S80.12 高清电视卫星接收机是一款首批能够接收和录制高清卫星电视的 PVR,在我们的测试中其称得上是这一领域的先锋。外接硬盘给我们带来了向计算机传输数据和制作 DVD 的乐趣,而周末电视机前舒适的晚上就不再有什么问题了,只需带着录制着你最喜欢的电影或表演的硬盘就足够了。通常, Eycos 接收机还应是客厅里的新伙计,因为它的使用非常简便易于家用

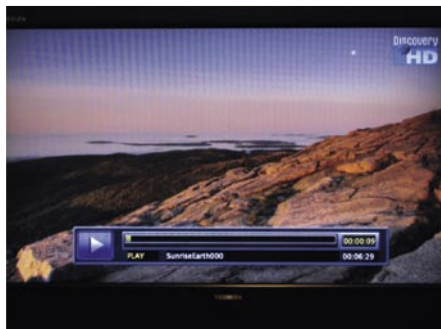
- 对于所有拥有复合馈源天线的用户来说应该有掌管 16 个 LNB 的 DiSEqC 1.1 协议。



TECHNIC DATA	
Manufacturer	Eycos
Distributor	Satforce Kommunikationstechnik GmbH
Tel	+49 (0)86 54 773 851
Fax	+49 (0)86 54 773 852
E-Mail	info@satforce.com
Model	S80.12 HD
Function	Digital HDTV Satellite PVR Receiver
Channel memory	6000
Satellites	175
Symbolrate	2~45 Ms/sec. (in test from ca. 1.6 Ms/s) in DVB 10~31 Ms/s in DVB-S2
SCPC compatible	yes
USALS	yes
DiSEqC	1.0 / 1.2 / 1.3
Scart euroconnectors	2
Audio/Video outputs	3xRCA
YUV	yes
HDMI	yes
USB 2.0	yes
S-ATA	yes
UHF output	no
0/12 Volt connection	no
Digital Audio output	yes
EPG	yes
C/Ku-Band compatible	yes
Power supply	95-250 VAC, 50/60 Hz



硬盘浏览器软件 |



回放指示条 |



某个频道的 EPG |



Technomate

Your Digital Partner For Life

New

TM-9100

Linux Satellite Receiver

- **Linux Home Multimedia Center**
- **PVR Ready**
- **9in 1 Memory Card Reader:**
Smart Media Card, SD, MMC, RSMHC,
Olympus, Mini SD, Memory Stick/Pro,
Memory Stick Duo/Pro Duo
- **Ethernet Communication Port**
- **Unlimited Channel Memory**
- **2x Smart Card Readers**
- **1x Common Interface (CI)**



ZI DE VUNT 4, 3220 HOLSBECK,
BELGIUM
Tel: +32(0)16/40.80.47

info@defisat.be

SPAUN SMS 91609 NF Multiswitch

你和邻居们可以同时接收到两个卫星

在市场上有很多复合开关。它们其中的一些是为卫星设计的，其余的则是为众多接收机设计的。有一些是Cascadable，当

你将来要拓展网络时它尤其有用，其余的则不用于延长网络。

我们决定要对德国制造商 SPAUN 的新型号开关 SMS 91609 NF 做进一步了解。它是一个复合开关，用于 2 个四输出 LNB 并实现对 16 个接收机的输入。它更大的“兄弟们”（SMS 920009 NF 和 SMS 93609 NF）甚至是设计

用于接驳 20 和 36 个接收机的。很明显，这些装置是设计用于小区里公寓居民接收常用的一两个卫星的。

正如你在照片上看到的，开关的工艺无可挑剔。SMS 91609 NF 看起来非常专业。如不接驳 2 个四输出 LNB，

你还可能连接 4 个 LNB、两个 LNB 或两个双本振 LNB，而你只需要按照要求在 SMS 91609 NF 顶端设置好“LNB 模式”。

除了卫星信号输入以外，复合开关也可输入一路开路电视信号并输出给 16 个用户。开路信号一定要接到“0”位置。其供电范围要求是 100~240 V，50/60 赫兹。借助其上盖的图例，任何人都会轻松地正确进行连接。

Transponder	Freq.	Pol.	Transponder	Freq.	Pol.
Tr-1	10719	V	Tr-7	10723	H
Tr-2	11278	V	Tr-8	11219	H
Tr-3	11662	V	Tr-9	11642	H
Tr-4	11727	V	Tr-10	11681	H
Tr-5	12111	V	Tr-11	12092	H
Tr-6	12713	V	Tr-12	12731	H

表1(table1)用于测试的热鸟卫星转发器数据



你准备自己连接许多电缆：
每个双卫星输入分为 H 和 V 两种极化和高低两个波段，
这使多达 16 个接收机可以选择任何他们需要接收的。
输入“0”是接收开路地面电视信号，而且到达所有的输出端口。



Bringing The World To Your Vision

Free to air Mercury II



- Channel Back-up function
- Channel Recovery function
- 8 button front panel
- 4 Device remote control
- Component/Composite/S-Video outputs
- Electronic Program Guide
- Power Scan with parameter controls



80 cm FTA Dish



STAB HH-90 Motor



FSKU-2V

Fortec Communications Inc.

Serving FTA around the world
www.fortecstar.com

Download this report in other languages from the Internet:

- Arabic العربية
- Indonesian Indonesia
- Bulgarian Български
- German Deutsch
- English English
- Spanish Español
- French Français
- Greek Ελληνικά
- Croatian Hrvatski
- Italian Italiano
- Hungarian Magyar
- Mandarin 中文
- Dutch Nederlands
- Polish Polski
- Russian Русский
- Turkish Türkçe

- www.TELE-satellite.com/TELE-satellite-0711/ara/spaun.pdf
- www.TELE-satellite.com/TELE-satellite-0711/bid/spaun.pdf
- www.TELE-satellite.com/TELE-satellite-0711/bul/spaun.pdf
- www.TELE-satellite.com/TELE-satellite-0711/deu/spaun.pdf
- www.TELE-satellite.com/TELE-satellite-0711/eng/spaun.pdf
- www.TELE-satellite.com/TELE-satellite-0711/esp/spaun.pdf
- www.TELE-satellite.com/TELE-satellite-0711/fra/spaun.pdf
- www.TELE-satellite.com/TELE-satellite-0711/hel/spaun.pdf
- www.TELE-satellite.com/TELE-satellite-0711/hrv/spaun.pdf
- www.TELE-satellite.com/TELE-satellite-0711/ita/spaun.pdf
- www.TELE-satellite.com/TELE-satellite-0711/mag/spaun.pdf
- www.TELE-satellite.com/TELE-satellite-0711/man/spaun.pdf
- www.TELE-satellite.com/TELE-satellite-0711/ned/spaun.pdf
- www.TELE-satellite.com/TELE-satellite-0711/pol/spaun.pdf
- www.TELE-satellite.com/TELE-satellite-0711/rus/spaun.pdf
- www.TELE-satellite.com/TELE-satellite-0711/tur/spaun.pdf

为测试这款开关的性能，我们选择了 Hotbird 卫星(13° E)上的 12 个转发器来当输入信号源。在表1中提供了它们的参数。当然，我们在天线上安装了四输出LNB(0.2 dB)，来看看该复合开关是否会正确地选择 LNB 输出。图 1 显示 SMS 91609 NF 3 个输出增益(接收机 1、3 和 5)。

这显示了从接收机输出端输出的信号与从 LNB 直接获得的信号比较起来有多少增益放大。如果增益是负，则该信号是变弱。SPAUN额定参数的典型值是: -2~+4dB。你在图解中可以看到,对于一些频率来说,我们取得了更大的增益,超过了额定值。

下一步,我们检查信号在通过复合开关之后的质量。为此,我们测量调制误差率(MER),在实际生活中,它比C/N更可信。虽然 MER 是源自于比特错误的数量而不是测量



开关侧面的LNB输入接口,最右侧的是开路信号接口。

SMS 91609 NF SPAUN 公司新型的 SMS 91609 NF 复合开关将所有接口标注的很清楚,安装者很容易知道如何接驳。

SMS 91609 NF 开关体积小,刚好能够接驳各个F接口,这里我们可以看见两边各接驳 8 个接收机。右边的螺丝孔是用来接地的。

噪音能量,这两种测量方法都有很密切的相互关系。MER 越高,C/N 比越高,信号质量也越好。每个复合开关都会降低输入信号的质量吗?这是物理学要管的事情。对于 SMS 91609

NF 又是如何呢? 你可以在图 2 见识到。

从图 1 和 图2 中你能得出推论:在输出端之间并没有大的不同。为了要确定这是事

实, 我们测试了同一输入信号各输出端的信号。结果在图 3 里显示。很显然,所有输出结果实际上完全相同。使用这个复合开关的邻居中没有一个人得到的信号比其他人要差。

图1 (Fig.1) 不同信号的增益

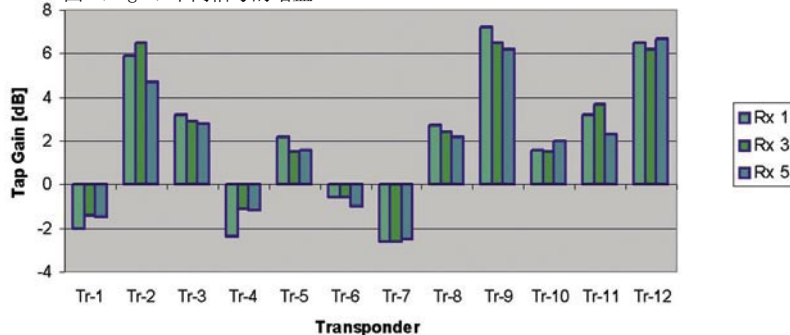
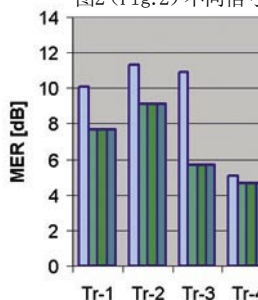


图2 (Fig.2) 不同信号



VSAT ANTENNA TVRO SYSTEM

Intelsat /GVF Type Approved

- Reliable Communications
- Rapid Communications
- Remote Communications



AZURE SHINE INTERNATIONAL INC.

No. 1000, Gwang Fu Road, Pa Teh City, Taoyuan, 33455 Taiwan, R.O.C.
 Http:// www.azureshine.com.tw/ E-mail: azure.shine@azureshine.com.tw
 Tel: 886-3-3611393 Fax: 886-3-3615877



Please visit us at IBC 2007 Booth No. H2-343 & TAITRONICS AUTUMN from 9 to 13 OCT. 2007 in Taipei, Taiwan

专家结论



Peter Miller
 TELE-satellite
 Test Center
 Poland

+

SPAUN 的 SMS 91609 NF 是一款高质量的复合开关, 面向需要接收 2 个卫星的专门拥护群, 并且他们将来不再需要扩充系统。复合开关的安装非常简单。它有很高的卫星信号增益和较低的开路电视信号损失。它的 16 个输出端口性能一致。

-

如果卫星信号不够强, 你最好使用一个较大的天线, 开关内不可避免地会有信号损耗。

号输入和输出的MER

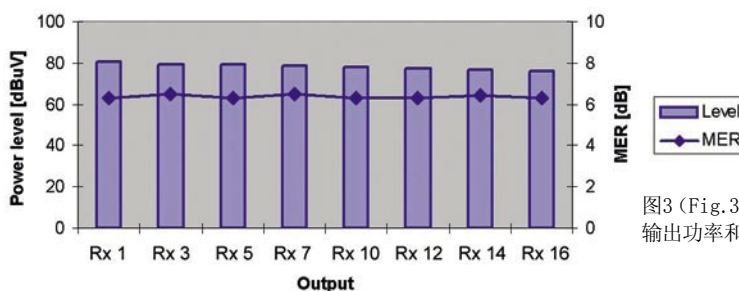
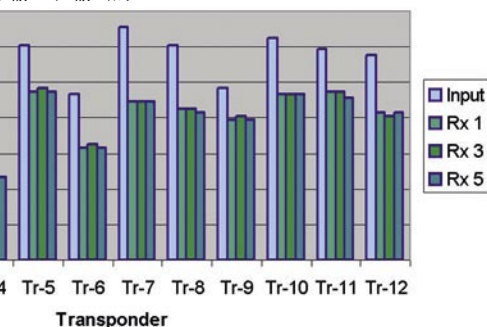


图3 (Fig. 3) 相同信号各输出端的输出功率和MER

TECHNIC	
DATA	
Manufacturer	SPAUN Electronic, Byk-Gulden-Str. 22 D-78224 Singen, Germany
Webpage	www.spaun.de
E-mail	info@spaun.de
Phone	+49 (0) 7731-86730
Fax	+49 (0) 7731-64202
Model	SMS 91609 NF
Function	Multiswitch with embedded power supply
Inputs	8 LNB + 1 terrestrial
Receiver outputs	16
Cascade outputs	none
Input frequency	950~2200 MHz (Sat.) and 5~862 MHz (Terr.)
IF tap gain	-2~+4 dB
Terrestrial tap loss	10~11 dB
Isolation between satellite inputs	> 30 dB
Remote power supply	700 mA per LNB
Power supply	100~240 V / 50~60 Hz 36 W max.
Operating temperature range	-20... + 50° C/dry indoor use

EMP P.168-W

“Motorized” DiSEqC Switch

DiSEqC 1.0 and 1.1 are for switching LNB’s, and DiSEqC 1.2 and 1.3 (USALS) are for controlling motors. Right? Right for everybody but not for EMP-Centauri! EMP-Centauri is a large manufacturer of multiswitches and DiSEqC switches as well as related accessories. Evidently, there must

have been a young engineer in that company who did not know that DiSEqC 1.2 was for motors - not for switches. Thanks to that fortunate event, we can now enjoy the P.168-W switch. The switch that can be controlled both with standard DiSEqC 1.1 and DiSEqC 1.2 commands!

The first nice thing about the switch becomes evident right after the first look. Yes, this is a switch to be mounted outside. Its protective cover and all connectors mounted on the bottom side leave no doubt about it. It means that one hole in your window frame is enough to get access up to 8 antennae. Moreover, you can use it to route the signal from your terrestrial antenna too. Of course you will need to split it up back to satellite and terrestrial cables after passing a window or a wall.

But let’s say something about the control of the switch. P.168-W can be driven by DiSEqC 1.1 command “Write N1” which selects one out of eight “uncommitted switches” (spe-

cific DiSEqC term). Namely, the following DiSEqC commands are used: Switch 1 (A/B), Switch 2 (A/B), Switch 3 (A/B) and Switch 4 (A/B).

If your hunger is not satisfied with 8 birds, you may extend this distribution system with the additional “normal” DiSEqC 1.0 switches. That’s because P.168-W responds only to the commands reserved for DiSEqC 1.1. So, when cascaded, the system can offer you even 32 LNB inputs (4x8). Naturally,

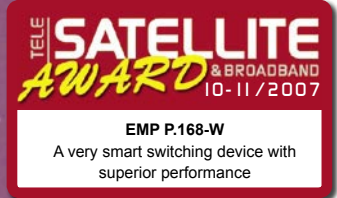


Figure 1. The principle of operation of P.168-W.

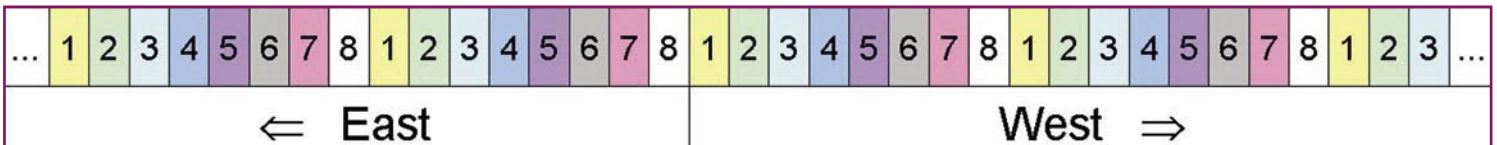
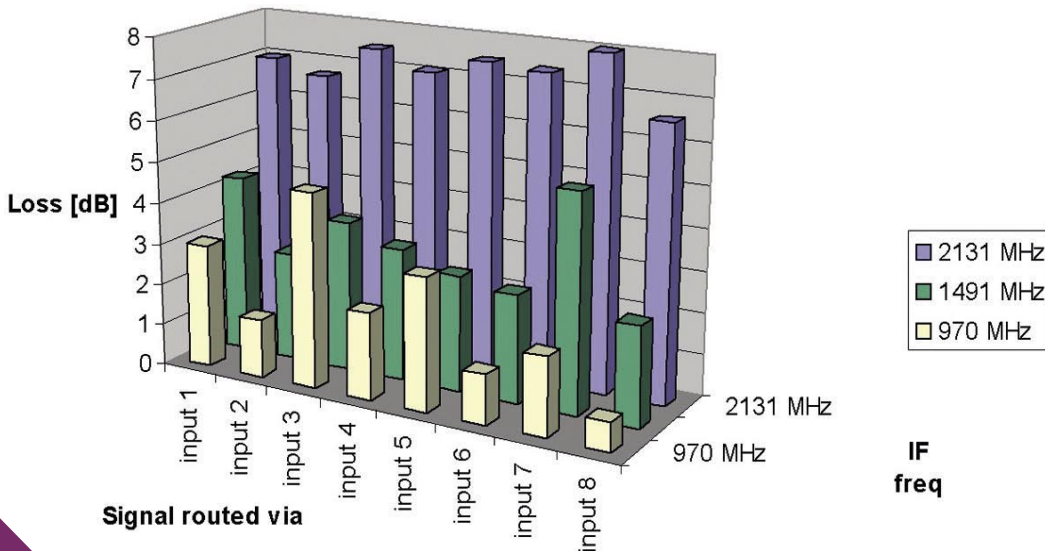


Figure 2. Signal loss versus frequency for different inputs.



your receiver would have to be compatible with DiSEqC 1.0 & 1.1.

But let’s focus on 8 inputs. It is a fact that not all receivers support DiSEqC 1.1. If your receiver supports only DiSEqC 1.0, the P.168-W will be of no use for you. However if it supports DiSEqC 1.2 you may use it very easily. And that’s where the magic of this product is!

Normally, DiSEqC 1.2 commands are used to move the dish to the East or to the West. In the motor installation menu you have the commands like: “Go to reference”, “Go to West” and “Go to East”. Sometimes also: “One step East” and “One step West”. Now, if you press and hold “Go West”

11th International Trade Fair and Conference for Satellite Communication, Broadcasting, Cable and TV Content

Broadcast
Cable & Satellite
eurasia

a **CEBIT** Event

www.cebitt-bcs.com



22 -25 November 2007
Istanbul Expo Center
Istanbul, TURKEY

Hall 9 : Broadcasting, Cable & TV Content
Hall 10 : Satellite Communication

Media Supporters:

broadcasterinfo
uydu dünyasi

Organization:



Deutsche Messe
Worldwide

Hannover-Messe International
Istanbul Ltd. Şti.

Phone: +90 212 334 69 00
Fax: +90 212 334 69 34
Email: info@hf-turkey.com

This fair is organized with the permission of The Union of Chambers and Commodity Exchanges of Turkey in accordance with the law number 5174.

the receiver will be sending commands to move motor to the West in small steps. P.168-W is designed in such way to recognize the "position of the motor" and switch on and off its switches in turn. It can be explained as in figure 1.

For example, if we are continuously "moving the dish" to the West, after a while Switch 1 will be turned on, a moment later it will be turned off and Switch 2 will be turned on, etc. After Switch 8, Switch 1 will be turned on again, then switch 2 and so on. We checked that the selection repeats over and over again in both direction: East and West. So it is not really any problem to teach your receiver how to control P.168-W. You connect your LNB to one of its inputs, set in the installation menu that this satellite signal comes from the DiSEqC 1.2 motor, and start "moving the dish" either to East or West. After maximum a few seconds, you will notice the signal. So, you release the button and execute Save command in the motor installation menu. From this moment on, your receiver will remember how to switch to this satellite with DiSEqC 1.2

command. You repeat the process with the rest of LNB's connected to other switch inputs.

Once you understand the DiSEqC 1.2 control idea, you will not like to return to the classical DiSEqC commands like Sat Position (A/B) or Option (A/B) which are quite often confusing for the "normal" people.

How fast is the switching between satellites? Is it comparable with a real motor system? Absolutely not! The switching is immediate, it is just a matter of milliseconds. You will not notice a difference between

channel zapping within one satellite and between different satellites!

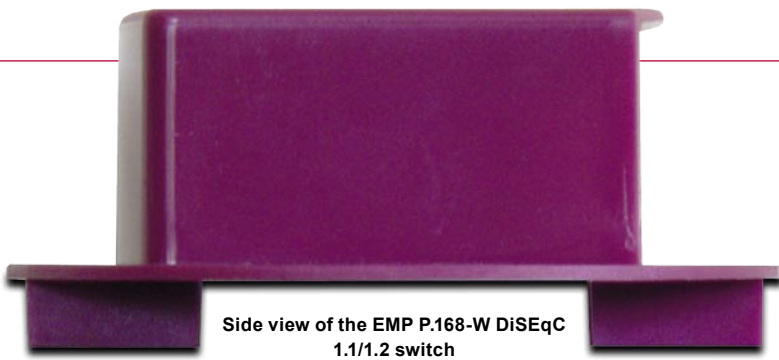
Having checked the installation and the satellite switching speed, we moved to the electrical characteristics of the product. First



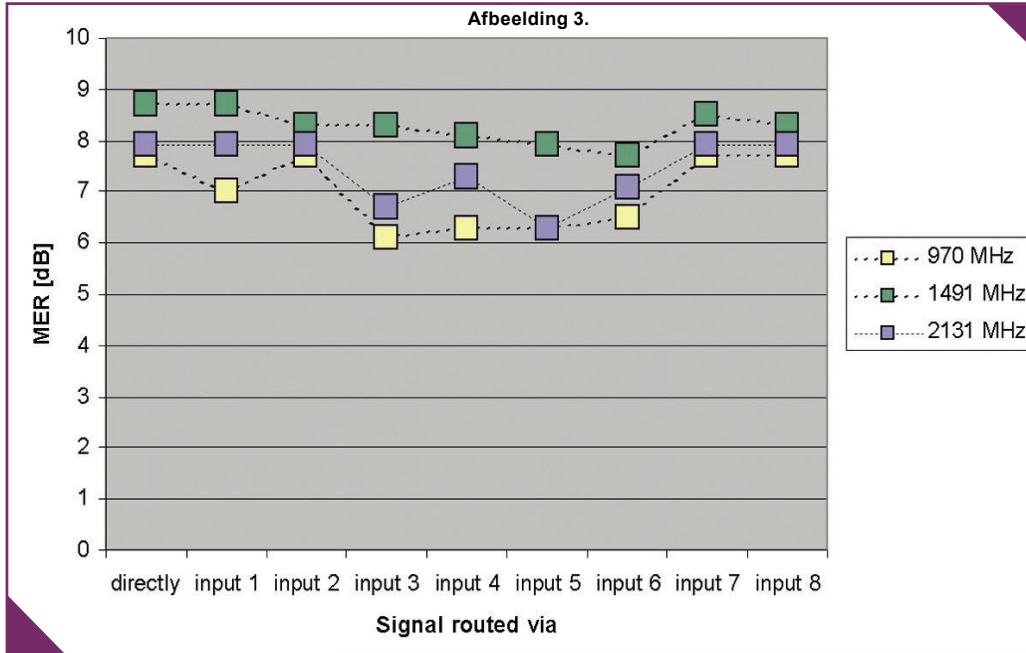
Arabic
Indonesian
Bulgarian
German
English
Spanish
French
Greek
Croatian
Italian
Hungarian
Mandarin
Dutch
Polish
Russian
Turkish

العربية
Indonesia
Български
Deutsch
English
Español
Français
Ελληνικά
Hrvatski
Italiano
Magyar
中文
Nederlands
Polski
Русский
Türkçe

www.TELE-satellite.com/TELE-satellite-0711/ara/emp.pdf
www.TELE-satellite.com/TELE-satellite-0711/bid/emp.pdf
www.TELE-satellite.com/TELE-satellite-0711/bul/emp.pdf
www.TELE-satellite.com/TELE-satellite-0711/deu/emp.pdf
www.TELE-satellite.com/TELE-satellite-0711/eng/emp.pdf
www.TELE-satellite.com/TELE-satellite-0711/esp/emp.pdf
www.TELE-satellite.com/TELE-satellite-0711/fra/emp.pdf
www.TELE-satellite.com/TELE-satellite-0711/hel/emp.pdf
www.TELE-satellite.com/TELE-satellite-0711/hrv/emp.pdf
www.TELE-satellite.com/TELE-satellite-0711/ita/emp.pdf
www.TELE-satellite.com/TELE-satellite-0711/mag/emp.pdf
www.TELE-satellite.com/TELE-satellite-0711/man/emp.pdf
www.TELE-satellite.com/TELE-satellite-0711/mand/emp.pdf
www.TELE-satellite.com/TELE-satellite-0711/ned/emp.pdf
www.TELE-satellite.com/TELE-satellite-0711/pol/emp.pdf
www.TELE-satellite.com/TELE-satellite-0711/rus/emp.pdf
www.TELE-satellite.com/TELE-satellite-0711/tur/emp.pdf



Side view of the EMP P.168-W DiSEqC 1.1/1.2 switch



switch. We were much more concerned about its noise performance. How much quality suffers when signal passes the switch? To evaluate this, we measured the modulation error ratio when the LNB was connected directly to the analyzer and when it was connected via different inputs of the switch. We tested all 8 inputs and the results were amazingly good! See figure 3. For some combinations of frequency and input port, the deterioration of signal quality was immeasurable! In the worst case the MER was reduced by less than 2 dB. This is pretty good! You may even use this switch with your DX antenna but if you do, it is a good idea to try the most critical satellite on different switch inputs. In our test sample, input 2, 7 and 8 were the best.

parameter we measured was the signal loss. P.168-W is a passive device so it can not amplify signal, it can only attenuate it. The specification promises 5 dB loss on the average. As you can see in figure 2, it varies from about 1dB to almost 8 dB, being better for the lower end of L-band and worse for the higher end. There was no need to check it for various bands or polarizations because every LNB outputs the intermediate frequency in 950~2150 MHz range.

So far, so good. But the signal loss is not the most critical parameter for a



Experts Conclusion

+

EMP P.168-W DiSEqC 1.1/1.2 switch is a very smart device. It is not only easy to install with DiSEqC 1.1 or 1.2 compatible receivers, but its electrical performance is really superior! For some input ports and frequencies, we were even unable to detect any change in signal quality despite using a dedicated analyzer (not just a commercial receiver).



Peter Miller
TELE-satellite
Test Center
Poland

-

It is difficult to attach cables to this switch – the connectors are too close to one another. If we could, we would also change the color of the casing. We usually do not pay attention to such kind of attributes for switches that are supposed to be mounted somewhere under the roof, but P.168-W will most likely be put in a visible place with a bunch of white cables connected to it from the bottom. Why not grey or white?

TECHNIC DATA

Manufacturer	EMP-Centauri, Czech Republic
Internet	www.emp-centauri.cz
Fax	+420-376-323-809
Model	P.168-W
Function	8+1 inputs DiSEqC 1.1/1.2 switch
Frequency range	5-2300 MHz
Control	DiSEqC 1.1, 1.2
Insertion Loss	Sat inputs: 5dB avg.; Terr. input: 3 dB avg.
Isolation	30 dB avg.
LNB current	400 mA max.
Current drawn	50 mA max.
Dimensions (w,d,h)	112.3 x 112.3 x 48.3 mm
Temperature range	-30°C~+70°C

BUILDING CITY OF THE FUTURE TOGETHER!

www.eebc.net.ua

5th EASTERN EUROPE
EXHIBITION AND CONFERENCE
IN TELECOMMUNICATIONS
AND BROADCASTING

EEBC
2007

Telecom & Broadcasting

PRODUCTS, SERVICES AND TECHNOLOGIES FOR
• TELECOMMUNICATIONS • BROADBAND SYSTEMS
• INTERNET • TELEVISION • BROADCASTING

**SEPTEMBER
27-29**
KIEV, UKRAINE
«KievExpoPlaza»

CUT ✂

5th EASTERN EUROPE EXHIBITION AND CONFERENCE IN TELECOMMUNICATIONS AND BROADCASTING

EEBC
2007
Telecom & Broadcasting

www.eebc.net.ua

VISITOR'S PASS
27-29 September, Kiev, Ukraine
«KievExpoPlaza», Salyutnaya street, 2-B

ORGANIZER:

TechExpo

"TECHEXPO" (UKRAINE)
+38 044 501 64 50
+38 044 501 64 51
INFO@EEBC.COM.UA



4813523

General Information Sponsor:



Official media partners:



Information media partner:



Media partners:



SatcoDX Global Satellite Chart 10/2007

Compiled by the Worldwide SatcoDX Monitoring Stations, exclusively for TELEsatellite Magazine New Channels Since Last Issue of E-satellite Magazine are marked with a ●

Table with 2 columns: Channel Name and Frequency. Includes sections for EUROBIHD 4.0 East, EUROBIHD 4.044.0 East, and SIRIUS 2.065.0 East.

Table with 2 columns: Channel Name and Frequency. Includes sections for SIRIUS 3.000.0 East, SIRIUS 3.000.0 East (continued), and SIRIUS 2.065.0 East (continued).

Table with 2 columns: Channel Name and Frequency. Includes sections for SIRIUS 2.065.0 East (continued), SIRIUS 2.065.0 East (continued), and SIRIUS 2.065.0 East (continued).

Table with 2 columns: Channel Name and Frequency. Includes sections for SIRIUS 2.065.0 East (continued), SIRIUS 2.065.0 East (continued), and SIRIUS 2.065.0 East (continued).

Table with 2 columns: Channel Name and Frequency. Includes sections for SIRIUS 2.065.0 East (continued), SIRIUS 2.065.0 East (continued), and SIRIUS 2.065.0 East (continued).

Table with 2 columns: Channel Name and Frequency. Includes sections for SIRIUS 2.065.0 East (continued), SIRIUS 2.065.0 East (continued), and SIRIUS 2.065.0 East (continued).

Table with 2 columns: Channel Name and Frequency. Includes sections for SIRIUS 2.065.0 East (continued), SIRIUS 2.065.0 East (continued), and SIRIUS 2.065.0 East (continued).

Table with 2 columns: Channel Name and Frequency. Includes sections for SIRIUS 2.065.0 East (continued), SIRIUS 2.065.0 East (continued), and SIRIUS 2.065.0 East (continued).

Table with 2 columns: Channel Name and Frequency. Includes sections for SIRIUS 2.065.0 East (continued), SIRIUS 2.065.0 East (continued), and SIRIUS 2.065.0 East (continued).

Der Spezialist für die SAT-ZF-Verteiltechnik

Einer für alle ...
Only one ...

8 SAT-ZF-Ebenen mit Terrestrik 8 SAT-IF-Layers with terrestrial

Freq./Po Channel Name	Symbolrate	Freq./Po Channel Name	Symbolrate	Freq./Po Channel Name	Symbolrate	Freq./Po Channel Name	Symbolrate
10.830H FLNMTZ Cy	27500	11.880 I 8MTV Brasil New	27500	12.020H BRAND	27500	12.020H BRAND	27500
10.830H MGM	27500	11.880H Pina Hls 1	27500	12.020H KISS ROM	27500	12.020H KISS ROM	27500
10.830H National Geographic	27500	11.880H Pina Hls 2	27500	12.020H KISS RUS	27500	12.020H KISS RUS	27500
10.830H Sigma Sports 1	27500	11.891 TV Test	27500	12.020H MB Radio PARIS	27500	12.020H MB Radio PARIS	27500
10.830H Sigma Sports 2	27500	11.891 TV Canal 5	27500	12.020H Music	27500	12.020H Music	27500
10.830H SBE Satva 2	27500	11.891 TV Italia 1	27500	12.020H PERAK ENKUSA	27500	12.020H PERAK ENKUSA	27500
10.830H SuperSport Cy	27500	11.891 TV Madhopping	27500	12.020H Radio 5	27500	12.020H Radio 5	27500
10.830H SuperSport 2	27500	11.891 TV Raketosport	27500	12.020H Radio 5 HD	27500	12.020H Radio 5 HD	27500
10.830H Travel Channel	27500	11.891 TV Raketosport	27500	12.020H RAI 1	27500	12.020H RAI 1	27500
10.830H WHV	27500	11.891 TV Raketosport	27500	12.020H RAI 2	27500	12.020H RAI 2	27500
10.830H CY Feed	27500	11.891 TV Raketosport	27500	12.020H RAI 3	27500	12.020H RAI 3	27500
10.830H NOVA SCOPE	27500	11.891 TV Raketosport	27500	12.020H RAI 4	27500	12.020H RAI 4	27500
10.830H Radio Gold	27500	11.891 TV Raketosport	27500	12.020H RAI 5	27500	12.020H RAI 5	27500
10.830H SPORT HD 8.2	27500	11.891 TV Raketosport	27500	12.020H RAI 6	27500	12.020H RAI 6	27500
10.830H SBT FM	27500	11.891 TV Raketosport	27500	12.020H RAI 7	27500	12.020H RAI 7	27500
10.830H EPIC	27500	11.891 TV Raketosport	27500	12.020H RAI 8	27500	12.020H RAI 8	27500
10.830H OTV PTV	27500	11.891 TV Raketosport	27500	12.020H RAI 9	27500	12.020H RAI 9	27500
10.849H Carlton Network	27500	11.891 TV Raketosport	27500	12.020H RAI 10	27500	12.020H RAI 10	27500
10.849H CANTON CEE Coboc	27500	11.891 TV Raketosport	27500	12.020H RAI 11	27500	12.020H RAI 11	27500
10.849H Disney Channel	27500	11.891 TV Raketosport	27500	12.020H RAI 12	27500	12.020H RAI 12	27500
10.849H Tunnel Classic Europe	27500	11.891 TV Raketosport	27500	12.020H RAI 13	27500	12.020H RAI 13	27500
10.849H Al Fort	27500	11.891 TV Raketosport	27500	12.020H RAI 14	27500	12.020H RAI 14	27500
10.849H Al Fort	27500	11.891 TV Raketosport	27500	12.020H RAI 15	27500	12.020H RAI 15	27500
10.849H AND	27500	11.891 TV Raketosport	27500	12.020H RAI 16	27500	12.020H RAI 16	27500
10.849H DMC TV	27500	11.891 TV Raketosport	27500	12.020H RAI 17	27500	12.020H RAI 17	27500
10.849H DMC TV	27500	11.891 TV Raketosport	27500	12.020H RAI 18	27500	12.020H RAI 18	27500
10.849H DMC TV	27500	11.891 TV Raketosport	27500	12.020H RAI 19	27500	12.020H RAI 19	27500
10.849H DMC TV	27500	11.891 TV Raketosport	27500	12.020H RAI 20	27500	12.020H RAI 20	27500
10.849H DMC TV	27500	11.891 TV Raketosport	27500	12.020H RAI 21	27500	12.020H RAI 21	27500
10.849H DMC TV	27500	11.891 TV Raketosport	27500	12.020H RAI 22	27500	12.020H RAI 22	27500
10.849H DMC TV	27500	11.891 TV Raketosport	27500	12.020H RAI 23	27500	12.020H RAI 23	27500
10.849H DMC TV	27500	11.891 TV Raketosport	27500	12.020H RAI 24	27500	12.020H RAI 24	27500
10.849H DMC TV	27500	11.891 TV Raketosport	27500	12.020H RAI 25	27500	12.020H RAI 25	27500
10.849H DMC TV	27500	11.891 TV Raketosport	27500	12.020H RAI 26	27500	12.020H RAI 26	27500
10.849H DMC TV	27500	11.891 TV Raketosport	27500	12.020H RAI 27	27500	12.020H RAI 27	27500
10.849H DMC TV	27500	11.891 TV Raketosport	27500	12.020H RAI 28	27500	12.020H RAI 28	27500
10.849H DMC TV	27500	11.891 TV Raketosport	27500	12.020H RAI 29	27500	12.020H RAI 29	27500
10.849H DMC TV	27500	11.891 TV Raketosport	27500	12.020H RAI 30	27500	12.020H RAI 30	27500
10.849H DMC TV	27500	11.891 TV Raketosport	27500	12.020H RAI 31	27500	12.020H RAI 31	27500
10.849H DMC TV	27500	11.891 TV Raketosport	27500	12.020H RAI 32	27500	12.020H RAI 32	27500
10.849H DMC TV	27500	11.891 TV Raketosport	27500	12.020H RAI 33	27500	12.020H RAI 33	27500
10.849H DMC TV	27500	11.891 TV Raketosport	27500	12.020H RAI 34	27500	12.020H RAI 34	27500
10.849H DMC TV	27500	11.891 TV Raketosport	27500	12.020H RAI 35	27500	12.020H RAI 35	27500
10.849H DMC TV	27500	11.891 TV Raketosport	27500	12.020H RAI 36	27500	12.020H RAI 36	27500
10.849H DMC TV	27500	11.891 TV Raketosport	27500	12.020H RAI 37	27500	12.020H RAI 37	27500
10.849H DMC TV	27500	11.891 TV Raketosport	27500	12.020H RAI 38	27500	12.020H RAI 38	27500
10.849H DMC TV	27500	11.891 TV Raketosport	27500	12.020H RAI 39	27500	12.020H RAI 39	27500
10.849H DMC TV	27500	11.891 TV Raketosport	27500	12.020H RAI 40	27500	12.020H RAI 40	27500
10.849H DMC TV	27500	11.891 TV Raketosport	27500	12.020H RAI 41	27500	12.020H RAI 41	27500
10.849H DMC TV	27500	11.891 TV Raketosport	27500	12.020H RAI 42	27500	12.020H RAI 42	27500
10.849H DMC TV	27500	11.891 TV Raketosport	27500	12.020H RAI 43	27500	12.020H RAI 43	27500
10.849H DMC TV	27500	11.891 TV Raketosport	27500	12.020H RAI 44	27500	12.020H RAI 44	27500
10.849H DMC TV	27500	11.891 TV Raketosport	27500	12.020H RAI 45	27500	12.020H RAI 45	27500
10.849H DMC TV	27500	11.891 TV Raketosport	27500	12.020H RAI 46	27500	12.020H RAI 46	27500
10.849H DMC TV	27500	11.891 TV Raketosport	27500	12.020H RAI 47	27500	12.020H RAI 47	27500
10.849H DMC TV	27500	11.891 TV Raketosport	27500	12.020H RAI 48	27500	12.020H RAI 48	27500
10.849H DMC TV	27500	11.891 TV Raketosport	27500	12.020H RAI 49	27500	12.020H RAI 49	27500
10.849H DMC TV	27500	11.891 TV Raketosport	27500	12.020H RAI 50	27500	12.020H RAI 50	27500



16 Teilnehmer
16 Receiver

SMS 91609 NF



20 Teilnehmer
20 Receiver

SMS 92009 NF



36 Teilnehmer
36 Receiver

SMS 93609 NF


Neuer Katalog Edition 11 gegen Gewerbenachweis.
Latest catalogue edition 11 only with trade evidence



Byk-Gulden-Str. 22 • D-82224 Singen
Telefon: +49 (0) 7731 - 86730 • Telefax: +49 (0) 7731 - 84202
E-Mail: info@spaun.de • www.spaun.de



SatODX Global Satellite Chart 10/007

Freq/Channel Name	Symbol rate	Freq/Channel Name	Symbol rate	Freq/Channel Name	Symbol rate	Freq/Channel Name	Symbol rate	Freq/Channel Name	Symbol rate	Freq/Channel Name	Symbol rate	Freq/Channel Name	Symbol rate	Freq/Channel Name	Symbol rate	
#02151 Saab Sport 27500		#12811 TBS 27500		#11851 Bahrain 53 27500		ASIRA 2A-B-D 			#02101 Boonboom 27500		#12221 Pakistan TV 27500		#10571 Channel M 27500		#02151 SaabTV 27500	

Main table containing satellite data with columns for Frequency, Channel Name, Symbol rate, Coverage, and various service details. Includes sections for EUTELSAT, HELIOS, and various regional services.

The Full Chart with the most up-to-date channel data is available exclusively for TELE-satellite readers from SatcoDX's CD "World of Satellites" CD is Exclusively Available only by Subscription to Print Copy of TELE-satellite Magazine - For Private and Personal Use Only - Commercial Use is Granted Only to Existing Advertisement Clients to TELE-satellite Magazine © SatcoDX Inc © TELE-satellite Medien GmbH

TELE-satellite

Tel.: +36 . 30 . 9336 277 Fax: +36 . 1 . 788 1043 m.szabo@TELE-satellite.com

Parabolspiegel bis 13 Meter

Verlustarmer Mehrbandempfang Erfahrungen in Europa / Asien / Afrika

Jürgen Müller Satellitenempfangstechnik 73249 Wernau, Panoramastr. 17 Tel.: 07153/32642, Fax: 07153/39583

VSAT-Systeme Internet via Satellit CATV und BK-Anlagen Hotelleitsysteme

Gewerbering 2 76351 LH-Hochstetten Fon (0 71 47) 20 70-0 Fax 20 70-600



Web: www.fh-sat.de

BLUETVAT logo, CARD SPLITTER, CARD SHARE NETWORK & SERVER, SHARECARD, IRDETO, SECA & VIACCESS, SHOW AT PRESENT PACHT+CA, OVER 100PCS ACCEPT OEM OFFER DVBS DESCRAMBLE

Main table listing satellite channels with columns for frequency, polarization, and channel name. Includes sub-sections for ASIASAT 4, SINOSAT 3, THAIACOM 1A, and various regional services.

The Full Chart with the most up-to-date channel data is available exclusively for TELE-satellite readers from SatcoDX's CD 'World of Satellites'... This CD is Exclusively Available only by Subscription to Print Copy of TELE-satellite Magazine... Commercial Use is Granted Only to Existing Advertisement Clients to TELE-satellite Magazine

Satellite Chart 10/2007

Freq/Pol/Channel Name	Symbol rate	Freq/Pol/Channel Name	Symbol rate	Freq/Pol/Channel Name	Symbol rate	Freq/Pol/Channel Name	Symbol rate	Freq/Pol/Channel Name	Symbol rate	Freq/Pol/Channel Name	Symbol rate	Freq/Pol/Channel Name	Symbol rate	Freq/Pol/Channel Name	Symbol rate
12.3011 ABC/CN2	25000	12.3011 BOBbing TV	25000	12.3011 CBS	25000	12.3011 HBO Channel	25000	12.3011 HBO Channel	25000	12.3011 HBO Channel	25000	12.3011 HBO Channel	25000	12.3011 HBO Channel	25000
12.3011 HBO Channel	25000	12.3011 HBO Channel	25000	12.3011 HBO Channel	25000	12.3011 HBO Channel	25000	12.3011 HBO Channel	25000	12.3011 HBO Channel	25000	12.3011 HBO Channel	25000	12.3011 HBO Channel	25000
12.3011 HBO Channel	25000	12.3011 HBO Channel	25000	12.3011 HBO Channel	25000	12.3011 HBO Channel	25000	12.3011 HBO Channel	25000	12.3011 HBO Channel	25000	12.3011 HBO Channel	25000	12.3011 HBO Channel	25000
12.3011 HBO Channel	25000	12.3011 HBO Channel	25000	12.3011 HBO Channel	25000	12.3011 HBO Channel	25000	12.3011 HBO Channel	25000	12.3011 HBO Channel	25000	12.3011 HBO Channel	25000	12.3011 HBO Channel	25000
12.3011 HBO Channel	25000	12.3011 HBO Channel	25000	12.3011 HBO Channel	25000	12.3011 HBO Channel	25000	12.3011 HBO Channel	25000	12.3011 HBO Channel	25000	12.3011 HBO Channel	25000	12.3011 HBO Channel	25000

10th ANNIVERSARY INTERNATIONAL EXHIBITION AND CONFERENCE

CSTB - 2008

4-7 FEBRUARY, MOSCOW, CROCUS EXPO

- PAY-TV: CABLE AND SATELLITE TV, IPTV, HDTV, CONTENT, MOBILE TV
- DIGITAL BROADCASTING • BROADBAND • SATELLITE COMMUNICATIONS



YOUR ONE STOP SHOP FOR TECHNOLOGY

www.cstb.ru

Organizer

MIDexpo
МЕЖДУНАРОДНЫЕ ВЫСТАВКИ И РЫНКИ

General partners



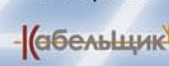
Conference sessions
in association with



Information sponsors



Industry
media-partner



Official travel agent



www.midtravel.ru

Satellite Global Satellite Chart 10/2007

Pol Channel Name	Symbol rate	Freq Pol Channel Name	Symbol rate	Freq Pol Channel Name	Symbol rate	Freq Pol Channel Name	Symbol rate	Freq Pol Channel Name	Symbol rate	Freq Pol Channel Name	Symbol rate	Freq Pol Channel Name	Symbol rate	Freq Pol Channel Name	Symbol rate
12.291 KPOD (ShopNBC)	20000	12.301 Galvacion USA Oeste	20000	12.311 Speed Channel Ne	30000	12.321 ESPN2	20000	12.331 ESPN FM	20000	12.341 RAKMAYI	20000	12.351 Reggae	20000	12.361 VUE 1	9600
12.292 Sports	20000	12.302 Galvacion USA Este	20000	12.312 Speed Channel Ne	30000	12.322 ESPN2 HD	20000	12.332 ESPN FM 2 HD	20000	12.342 RAKMAYI	20000	12.352 Reggae	20000	12.362 VUE 2	9600
12.293 HBO World	20000	12.303 Galvacion USA Oeste	20000	12.313 Speed Channel Ne	30000	12.323 ESPN2 HD	20000	12.333 ESPN FM 2 HD	20000	12.343 RAKMAYI	20000	12.353 Reggae	20000	12.363 VUE 3	9600
12.294 KMLTY	20000	12.304 Galvacion USA Este	20000	12.314 Speed Channel Ne	30000	12.324 ESPN2 HD	20000	12.334 ESPN FM 2 HD	20000	12.344 RAKMAYI	20000	12.354 Reggae	20000	12.364 VUE 4	9600
12.295 KNEWS-TV	20000	12.305 Galvacion USA Oeste	20000	12.315 Speed Channel Ne	30000	12.325 ESPN2 HD	20000	12.335 ESPN FM 2 HD	20000	12.345 RAKMAYI	20000	12.355 Reggae	20000	12.365 VUE 5	9600
12.296 KNEWS-TV	20000	12.306 Galvacion USA Este	20000	12.316 Speed Channel Ne	30000	12.326 ESPN2 HD	20000	12.336 ESPN FM 2 HD	20000	12.346 RAKMAYI	20000	12.356 Reggae	20000	12.366 VUE 6	9600
12.297 KNEWS-TV	20000	12.307 Galvacion USA Oeste	20000	12.317 Speed Channel Ne	30000	12.327 ESPN2 HD	20000	12.337 ESPN FM 2 HD	20000	12.347 RAKMAYI	20000	12.357 Reggae	20000	12.367 VUE 7	9600
12.298 KNEWS-TV	20000	12.308 Galvacion USA Este	20000	12.318 Speed Channel Ne	30000	12.328 ESPN2 HD	20000	12.338 ESPN FM 2 HD	20000	12.348 RAKMAYI	20000	12.358 Reggae	20000	12.368 VUE 8	9600
12.299 KNEWS-TV	20000	12.309 Galvacion USA Oeste	20000	12.319 Speed Channel Ne	30000	12.329 ESPN2 HD	20000	12.339 ESPN FM 2 HD	20000	12.349 RAKMAYI	20000	12.359 Reggae	20000	12.369 VUE 9	9600
12.300 KNEWS-TV	20000	12.310 Galvacion USA Este	20000	12.320 Speed Channel Ne	30000	12.330 ESPN2 HD	20000	12.340 ESPN FM 2 HD	20000	12.350 RAKMAYI	20000	12.360 Reggae	20000	12.370 VUE 10	9600
12.301 KNEWS-TV	20000	12.311 Galvacion USA Oeste	20000	12.321 Speed Channel Ne	30000	12.331 ESPN2 HD	20000	12.341 ESPN FM 2 HD	20000	12.351 RAKMAYI	20000	12.361 Reggae	20000	12.371 VUE 11	9600
12.302 KNEWS-TV	20000	12.312 Galvacion USA Este	20000	12.322 Speed Channel Ne	30000	12.332 ESPN2 HD	20000	12.342 ESPN FM 2 HD	20000	12.352 RAKMAYI	20000	12.362 Reggae	20000	12.372 VUE 12	9600
12.303 KNEWS-TV	20000	12.313 Galvacion USA Oeste	20000	12.323 Speed Channel Ne	30000	12.333 ESPN2 HD	20000	12.343 ESPN FM 2 HD	20000	12.353 RAKMAYI	20000	12.363 Reggae	20000	12.373 VUE 13	9600
12.304 KNEWS-TV	20000	12.314 Galvacion USA Este	20000	12.324 Speed Channel Ne	30000	12.334 ESPN2 HD	20000	12.344 ESPN FM 2 HD	20000	12.354 RAKMAYI	20000	12.364 Reggae	20000	12.374 VUE 14	9600
12.305 KNEWS-TV	20000	12.315 Galvacion USA Oeste	20000	12.325 Speed Channel Ne	30000	12.335 ESPN2 HD	20000	12.345 ESPN FM 2 HD	20000	12.355 RAKMAYI	20000	12.365 Reggae	20000	12.375 VUE 15	9600
12.306 KNEWS-TV	20000	12.316 Galvacion USA Este	20000	12.326 Speed Channel Ne	30000	12.336 ESPN2 HD	20000	12.346 ESPN FM 2 HD	20000	12.356 RAKMAYI	20000	12.366 Reggae	20000	12.376 VUE 16	9600
12.307 KNEWS-TV	20000	12.317 Galvacion USA Oeste	20000	12.327 Speed Channel Ne	30000	12.337 ESPN2 HD	20000	12.347 ESPN FM 2 HD	20000	12.357 RAKMAYI	20000	12.367 Reggae	20000	12.377 VUE 17	9600
12.308 KNEWS-TV	20000	12.318 Galvacion USA Este	20000	12.328 Speed Channel Ne	30000	12.338 ESPN2 HD	20000	12.348 ESPN FM 2 HD	20000	12.358 RAKMAYI	20000	12.368 Reggae	20000	12.378 VUE 18	9600
12.309 KNEWS-TV	20000	12.319 Galvacion USA Oeste	20000	12.329 Speed Channel Ne	30000	12.339 ESPN2 HD	20000	12.349 ESPN FM 2 HD	20000	12.359 RAKMAYI	20000	12.369 Reggae	20000	12.379 VUE 19	9600
12.310 KNEWS-TV	20000	12.320 Galvacion USA Este	20000	12.330 Speed Channel Ne	30000	12.340 ESPN2 HD	20000	12.350 ESPN FM 2 HD	20000	12.360 RAKMAYI	20000	12.370 Reggae	20000	12.380 VUE 20	9600

Freq/Pol Channel Name	Symbol rate	Freq/Pol Channel Name	Symbol rate	Freq/Pol Channel Name	Symbol rate	Freq/Pol Channel Name	Symbol rate	Freq/Pol Channel Name	Symbol rate	Freq/Pol Channel Name	Symbol rate	Freq/Pol Channel Name	Symbol rate	Freq/Pol Channel Name	Symbol rate
DIRECTV VS		AMC 1		4800 MHz	2847	4800 MHz	2847	1240 MHz	1900	1240 MHz	1900	3775 MHz	3070	1875 MHz	2600
25.0 East (103.8 West)		103.5 West (103.5 East)		4800 MHz	2847	4800 MHz	2847	1240 MHz	1900	1240 MHz	1900	3775 MHz	3070	1875 MHz	2600
AMC195		AMC195		4800 MHz	2847	4800 MHz	2847	1240 MHz	1900	1240 MHz	1900	3775 MHz	3070	1875 MHz	2600
DIRECTV VS 25.0 East		AMC 1 25.0 East		4800 MHz	2847	4800 MHz	2847	1240 MHz	1900	1240 MHz	1900	3775 MHz	3070	1875 MHz	2600
12.818 GHz USA	2000	12.818 GHz USA	2000	4800 MHz	2847	4800 MHz	2847	1240 MHz	1900	1240 MHz	1900	3775 MHz	3070	1875 MHz	2600
ENIK F1 CIR		ENIK F1 CIR		4800 MHz	2847	4800 MHz	2847	1240 MHz	1900	1240 MHz	1900	3775 MHz	3070	1875 MHz	2600
23.8 East (107.3 West)		ANIK F1 23.7 West		4800 MHz	2847	4800 MHz	2847	1240 MHz	1900	1240 MHz	1900	3775 MHz	3070	1875 MHz	2600
ANIK916		ANIK916		4800 MHz	2847	4800 MHz	2847	1240 MHz	1900	1240 MHz	1900	3775 MHz	3070	1875 MHz	2600
11.817 GHz USA	2000	11.817 GHz USA	2000	4800 MHz	2847	4800 MHz	2847	1240 MHz	1900	1240 MHz	1900	3775 MHz	3070	1875 MHz	2600
ANIK F1 23.7 East		ANIK F1 23.7 East		4800 MHz	2847	4800 MHz	2847	1240 MHz	1900	1240 MHz	1900	3775 MHz	3070	1875 MHz	2600
ANIK916		ANIK916		4800 MHz	2847	4800 MHz	2847	1240 MHz	1900	1240 MHz	1900	3775 MHz	3070	1875 MHz	2600
12.818 GHz USA	2000	12.818 GHz USA	2000	4800 MHz	2847	4800 MHz	2847	1240 MHz	1900	1240 MHz	1900	3775 MHz	3070	1875 MHz	2600
ENIK F1 CIR		ENIK F1 CIR		4800 MHz	2847	4800 MHz	2847	1240 MHz	1900	1240 MHz	1900	3775 MHz	3070	1875 MHz	2600
23.8 East (107.3 West)		ANIK F1 23.7 West		4800 MHz	2847	4800 MHz	2847	1240 MHz	1900	1240 MHz	1900	3775 MHz	3070	1875 MHz	2600

The Full Chart with the most up-to-date channel data is available exclusively for TELE-satellite readers from SatcoDX's CD "World of Satellites". This CD is Exclusively Available only by Subscription to Print Copy of TELE-satellite Magazine — For Private and Personal Use Only — Commercial Use is Granted Only to Existing Advertisement Clients to TELE-satellite Magazine © SatcoDX Inc © TELE-satellite Medien GmbH

Main table containing satellite data with columns for Frequency, Channel Name, Symbol rate, and various satellite names like BRASILEX, AMAZONAS, INTRAVIS, etc.

The Full Chart with the most up-to-date channel data is available exclusively for TELE-satellite readers from SatcoDX's CD "World of Satellites" This CD is Exclusively Available only by Subscription to Print Copy of TELE-satellite Magazine - For Private and Personal Use Only - Commercial Use is Granted Only to Existing Advertisement Clients to TELE-satellite Magazine © SatcoDX Inc © TELE-satellite Medien GmbH

Satellite Global Satellite Chart 10/2007

Freq/Ch Channel Name	Symbol rate	Freq/Ch Channel Name	Symbol rate	Freq/Ch Channel Name	Symbol rate	Freq/Ch Channel Name	Symbol rate	Freq/Ch Channel Name	Symbol rate	Freq/Ch Channel Name	Symbol rate	Freq/Ch Channel Name	Symbol rate	Freq/Ch Channel Name	Symbol rate
11.8771 (Empy Name)	27000	12.5411 01 02 18T	27000	11.2001 HbT1A	27000	10.8891 DVBbox	27000	4.175 R Adiant2	20000	11.0111 CANAL+ SPORT HD	20000	11.8771 (Empy Name)	27000	12.5411 01 02 31T	27000
11.8961 Shm Cam	27000	12.5411 01 02 14	27000	11.2001 HbT1A	27000	10.8891 DVBbox	27000	4.175 R Adiant3	20000	11.0111 Hb HD	20000	11.8961 Shm Cam	27000	12.5411 01 02 15	27000
11.8961 Shm Cam	27000	12.5411 01 02 16	27000	11.2001 HbT1A	27000	10.8891 DVBbox	27000	4.175 R Fashion TV	20000	11.0111 Hb HD	20000	11.8961 Shm Cam	27000	12.5411 01 02 16	27000
11.8961 Shm Cam	27000	12.5411 01 02 17	27000	11.2001 HbT1A	27000	10.8891 DVBbox	27000	4.175 R News	20000	11.0111 Hb HD	20000	11.8961 Shm Cam	27000	12.5411 01 02 17	27000
11.8961 Shm Cam	27000	12.5411 01 02 18	27000	11.2001 HbT1A	27000	10.8891 DVBbox	27000	4.175 R Sport	20000	11.0111 Hb HD	20000	11.8961 Shm Cam	27000	12.5411 01 02 18	27000
11.8961 Shm Cam	27000	12.5411 01 02 19	27000	11.2001 HbT1A	27000	10.8891 DVBbox	27000	4.175 R Spectrum	20000	11.0111 Hb HD	20000	11.8961 Shm Cam	27000	12.5411 01 02 19	27000
11.8961 Shm Cam	27000	12.5411 01 02 20	27000	11.2001 HbT1A	27000	10.8891 DVBbox	27000	4.175 R Sports	20000	11.0111 Hb HD	20000	11.8961 Shm Cam	27000	12.5411 01 02 20	27000
11.8961 Shm Cam	27000	12.5411 01 02 21	27000	11.2001 HbT1A	27000	10.8891 DVBbox	27000	4.175 R TBS	20000	11.0111 Hb HD	20000	11.8961 Shm Cam	27000	12.5411 01 02 21	27000
11.8961 Shm Cam	27000	12.5411 01 02 22	27000	11.2001 HbT1A	27000	10.8891 DVBbox	27000	4.175 R The Sports Channel	20000	11.0111 Hb HD	20000	11.8961 Shm Cam	27000	12.5411 01 02 22	27000
11.8961 Shm Cam	27000	12.5411 01 02 23	27000	11.2001 HbT1A	27000	10.8891 DVBbox	27000	4.175 R Viasat	20000	11.0111 Hb HD	20000	11.8961 Shm Cam	27000	12.5411 01 02 23	27000
11.8961 Shm Cam	27000	12.5411 01 02 24	27000	11.2001 HbT1A	27000	10.8891 DVBbox	27000	4.175 R Viasat	20000	11.0111 Hb HD	20000	11.8961 Shm Cam	27000	12.5411 01 02 24	27000
11.8961 Shm Cam	27000	12.5411 01 02 25	27000	11.2001 HbT1A	27000	10.8891 DVBbox	27000	4.175 R Viasat	20000	11.0111 Hb HD	20000	11.8961 Shm Cam	27000	12.5411 01 02 25	27000
11.8961 Shm Cam	27000	12.5411 01 02 26	27000	11.2001 HbT1A	27000	10.8891 DVBbox	27000	4.175 R Viasat	20000	11.0111 Hb HD	20000	11.8961 Shm Cam	27000	12.5411 01 02 26	27000
11.8961 Shm Cam	27000	12.5411 01 02 27	27000	11.2001 HbT1A	27000	10.8891 DVBbox	27000	4.175 R Viasat	20000	11.0111 Hb HD	20000	11.8961 Shm Cam	27000	12.5411 01 02 27	27000
11.8961 Shm Cam	27000	12.5411 01 02 28	27000	11.2001 HbT1A	27000	10.8891 DVBbox	27000	4.175 R Viasat	20000	11.0111 Hb HD	20000	11.8961 Shm Cam	27000	12.5411 01 02 28	27000
11.8961 Shm Cam	27000	12.5411 01 02 29	27000	11.2001 HbT1A	27000	10.8891 DVBbox	27000	4.175 R Viasat	20000	11.0111 Hb HD	20000	11.8961 Shm Cam	27000	12.5411 01 02 29	27000
11.8961 Shm Cam	27000	12.5411 01 02 30	27000	11.2001 HbT1A	27000	10.8891 DVBbox	27000	4.175 R Viasat	20000	11.0111 Hb HD	20000	11.8961 Shm Cam	27000	12.5411 01 02 30	27000
11.8961 Shm Cam	27000	12.5411 01 02 31	27000	11.2001 HbT1A	27000	10.8891 DVBbox	27000	4.175 R Viasat	20000	11.0111 Hb HD	20000	11.8961 Shm Cam	27000	12.5411 01 02 31	27000

SMART WIRES WITH A HUMAN FACE!



TAITRONICS AUTUMN

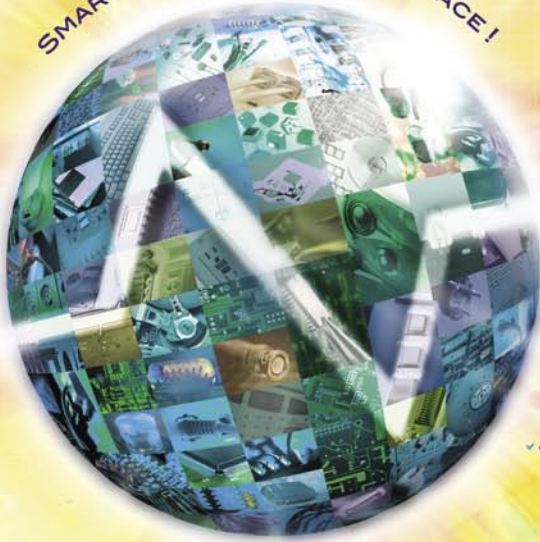
Taipei Int'l
Electronics
Autumn Show

Oct. 9-13
2007

www.taitronics.org/taipei

FEATURING

- ✓ Electronic Components & Equipment
- ✓ Meters & Instruments
- ✓ Wires & Cables
- ✓ Electronic Manufacturing Equipment
- ✓ Inspection Equipment
- ✓ Consumer Electronics
- ✓ Telecom & Satellite Products
- ✓ Security Systems & Products
- ✓ Computers & Peripherals
- ✓ Wireless & Networking Products
- ✓ Audio & Video
- ✓ Auto Electronics
- ✓ Stage Technology & Illumination Devices



NEW SIGNALS
UNLIMITED POSSIBILITIES



Taiwan RFID

Taiwan Int'l RFID Applications Show

2007
Oct. 9 - 13

www.RFIDTaiwan.com.tw

Organizers:



Taiwan External Trade
Development Council (TAITRA)

www.taiwantrade.com.tw
www.taitra.org.tw
E-mail: taitrronics@taitra.org.tw
rfid@taitra.org.tw



Taiwan Electrical &
Electronic Manufacturers'
Association (TEEMA)
www.teema.org.tw



Venue:

Taipei World
Trade Center
Exhibition Halls 1 & 3

2007 Photovoltaic Forum & Exhibition Taiwan

Taiwan International
Photovoltaic Forum & Exhibition

2007.10.11-12
www.pvtaiwan.com



Organizer :



Taiwan External Trade
Development Council (TAITRA)
E-mail: pv@taitra.org.tw

Sponsor :



Taipei World
Trade Center (TWTC)
www.twtc.com.tw

Venue:



Taipei International
Convention Center (TICC)
www.ticc.com.tw

“只有最好”

Alexander Wiese

只有最好的品牌和最好的质量，这是卫星器材批发商多比斯的生意经。他们的客户只有经销商和批发商，不是最终用户。专注于经销商上必然会重视产品的质量：最终用户主要在乎价格，而并不太注重质量，但对于专业人士来说，这是相对的。因为专业的天线安装人员受雇于他们的客户来安装卫星系统，这些安装人员需要使用优质零配件。事实上，专业人员自己也正在逐渐注意成本。

1987年，由赫尔玛·多比斯在一间车库成立了这家公司。这间车库最后变成了一间谷仓。赫尔玛是一个卫星器材爱好者，他在销售天线推杆方面有了很大的成功。他的公司逐步扩大，直到10年后他遇到了瓶颈。他积累了超过1000个国内外客户，他的生意变成非常吸引人。1998年，高福根公司注意到了已取得成功的多比斯和他的潜力。高福根公司从前是一个电子安装领域中的批发商，它成立于在1920年。

自从高福根接管多比斯以后，瑞纳·沃

克英就开始加强管理。克里斯托弗·高贝尔斯是多比斯的老板和经营者。2003年，多比斯公司搬到了小城穆德斯巴赫商务区中的一个新位置，沿着高速公路主干道到法兰克福只有17公里

母公司在电子安装领域的业务特点也体现在这栋建筑物里：当有人进入房间的时候，感应器就会发现，而天花板会自动发光照亮昏暗的室内。甚至仓库的加热系统也不一般，它更具有创意。瑞纳·沃克英解释说：“总共钻了10个洞通到地下70米处。在那里，地下水常年



▲ 瑞纳·沃克英谦逊地介绍他自己是“团队领导”而不是总经理。事实上是他来管理多比斯。但是他真的不需要头衔，但他已经有一个：他是目前德国老年铅球冠军！

保持14°C(57°F)的恒温，通过循环泵将水送到地面的加热系统。”冬天用来加热，夏天用来致冷。高福根很愿意让来访者见识他们使用多比斯设备储存能



▲ 多比斯在穆德斯巴赫的场地。办公室在前面而背面是仓库。门前一个标识让每个人知道在这里可以讲多种语言：除了英语和德语，客户也能用土耳其语，俄语和法语沟通。

www.invacom.com
sales@invacom.com



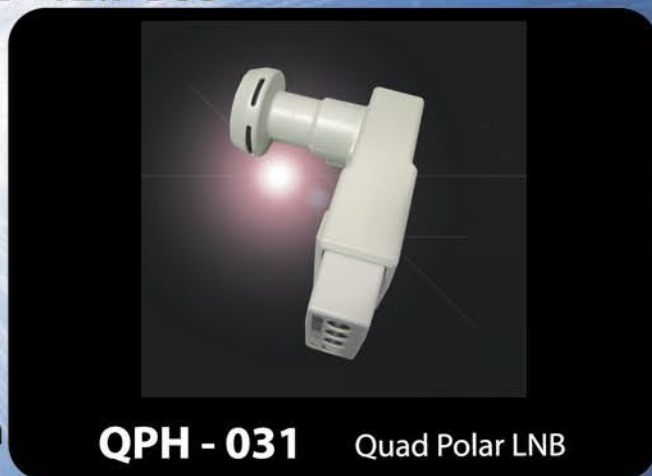
Tel +44 1438 317775
Fax +44 1438 310115

Innovation in Communications

Performance makes a Perfect Picture Everytime

The Invacom Quad Polar - The World's ONLY Circular & Linear LNB

- For FSS & BSS @ 11.7 - 12.7GHz FSS & 12.2 - 12.7 BSS
- Ideal for FTA & motorised antenna
- Proven noise figure
- 50 - 60 dB Gain
- Dual Oscillator
- Excellent stability (+/- 1MHz)
- Isolation (>30dB for Linear & >23dB for Circular)
- Available for Offset & Prime Focus antenna



QPH - 031 Quad Polar LNB

Full range of Single, Twin & Quad LNBs available

- 0.3dB noise figure (Proven with enclosed datasheet)
- 50 - 60dB Gain



QTH - 031 Universal Quad LNB



SNF - 031 Universal Single LNB

For Invacom's full range of VSAT Transmitters (BUCs) & LNBs (DRO & PLL), contact Invacom direct

Invacom products are ONLY available from Appointed dealers of the Invacom Master Distributor for the USA:

DMS International, 320B Northpoint Parkway, Acworth, Georgia, 30102

Tel: 770 529 6800

Fax: 770 529 6840

www.dmsiusa.com



这两位女职员和所有的男职员一样工作。科斯汀·克莱默(左边)负责处理来电,而茱塔·朗(右边的)则负责处理网站设计、每期《国际卫星电视》的广告等媒体方面的业务。茱塔·朗正在处理面前的工作:多比斯正在筹划一个网上商店,客户们可以通过它下订单。



这是技术支持团:丹尼斯(左边)、艾柔·阿尔古(中间)和克罗斯·如白萨姆(右边)。克罗斯解释说:“我们在当天就能处理完所有的维护合同。”不会耽搁一个,我们可以领略到多比斯的客户服务。每个工作站在楼前面都有三个天线和室内相联。在这里你会发现一个 1.0 米的极轴天线,一个 1.2 米的极轴天线,最大的一个是 E85 多焦点天线,一个 1.0 米的多馈源天线,还有一个 0.9 米环焦天线,它们对着 Turksat、Arabsat、Hotbird、Astra 和 W3A 卫星。一个60cm 的小天线和一个 30 多米的电缆行灯用来做为参照。“这让我们测试接收的问题是在接收机这端还是在天线那端”,克罗斯介绍说。

量技术的好处。让来访者在多比斯印象深刻的不仅是照明和加热系统,在入口处也看不到接待大厅,而是直接进入销售场所。“高效”是对多比斯管理的最好描述。1998 年,多比斯易手的时候只有 7 名职员,而今天它已经有了 18 名。瑞纳·沃克英在他的名片上用加亮的字体印着他的职位——“团队领导”,他给我们数着:“我们有 5 位技术员,4 位办公室职员,加上 1 个团队领导,5 个库管员及其主管,1 个媒体设计师,还有我的秘书,她也负责接电话。”

卫星器材安装需要什么多比斯就有什么,而且数量充足。卫星器材经销商今天需要一个 4.9 米天线吗?没有问题,“我们立刻发货送出一个碟形天线,我们的存货中就有”,瑞纳·沃克英边显示碟形天线边说道。确信货源充足,它就在那里,一个卫星爱好者的梦想马上就能实现了!他们的多数生意来自于如下产品:“我们销售额的 70% 是接

运送部门一瞥:马克西米连·斯戴格正在准备运送一个软件包裹,而仓库主管威尔弗瑞德·克力曼正在浏览有关运送文件。后面的箱子已经准备好装入一两个集装箱。总是有两个集装箱在码头上周转。多比斯和航运公司 GLS 合作,每天都有集装箱运送给客户。



收机”,瑞纳·沃克英说,“10% 是 LNB,其余的 5% 是信号分析仪和附件等。”

销售额的大部分是接收机,原因是它们是最贵的产品。高清接收机怎么样呢?瑞纳·沃克英的回答使我们吃惊:“2007 年,我们销售接收机的 20% 是高清机型,我们预计到 2008 年会增长到 40%,当然,如果有更好的高清电视频道,销售额可能会更多。”

多比斯努力关注于质量和品牌。“直

天线仓库一瞥。瑞纳·沃克英正握住两个常见的天线。右面架上的是 1.9 米天线的环型架。多比斯的进货里也包括 3.05 和 3.65 米的网状天线!



销售团队在工作： 卡尔·弗雷德里曼·摩根泰尔(左边)和瑞纳·赛克斯(右边)负责客户的定单...



...托斯顿·米勒(左边)和计划经理彼得·米切尔斯·泰斯(右边)。



在仓库并不能见到很多的空闲空间。但是没有问题，扩充很容易。

他们销售区域又如何呢?“我们 75% 销售在欧洲,只有 25% 在国内”, 瑞纳·沃克英解释说,“我们未来也不会改变这个比例。”我们现在没有向国际拓展的计划。首要的是要牢牢抓住新的客户:“多布斯需要知道他们的情况,而对于外国客户,还需要知道他们的纳税编号和增值税编号”,瑞纳·沃克英说明他们的策略是只针对专业的经销商。

多布斯如何看待未来的市场? “家用多媒体,也就是连接到网络上的接收机”,主管计划的经理彼得·米切尔斯·泰斯说道。“高清接收机”,瑞纳沃克英补充说,“我们的场地占地面积是 8000 平方米,已经占用了 1100 平方米。我们还想要随时扩展 500 平方米。”多布斯有充足的房间来满足持续扩展业务的需要!专注于经销商已经是一个成功的策略,同时并重理性和高效的管理,提供吸引人的价格就成为可能。多布斯正在设定非常好的未来发展前景!

到两年前,我们的一些产品还是贴着‘私人标志’,瑞纳·沃克英慢慢回忆说,“但是我们放弃了这种作法,这是一个很好决策,它这给予了多布斯更多的自主权来从厂家那里得到更好的产品。”我们现在有 100 种不同型号的接收机”,产品经理卡尔·弗里德里希·摩根泰尔解释说。我们有每个型号的 Humax,在德语区多布斯是 Humax 产品的主要销售商,也有各种型号的 Topfield 和 Eycos。

瑞纳·沃克英给我们看他喜爱的照片: “哪里有团结,哪里就有成功”。他说结果看起来有点像这里:“如果万一仓库变得非常忙碌,管理必须马上解决:我们卷起袖管一起干好每件工作,直到包装装船完毕。”团队工作变成了现实效果。



迪·瑞恩佐



汤尼把他的机柜移开给我们展示看他墙壁上的电缆线。他的天线最多能连接六个接收机。一个 4DTV 接收机为 LNB 供电并作为天控器控制天线马达。其它的接收机则连接到功分器及 DiSEqC 开关上。



汤尼·迪·瑞恩佐站在他后院里的 3 米天线旁,在他前面是他那装有 Stab 马达的 1.2 米天线。

汤尼·迪·瑞恩佐对于《国际卫星电视》的读者们来说应该是一个熟悉的名字。在 03/2006 期的《国际卫星电视》报道过他用一个小的天线做的 C 波段

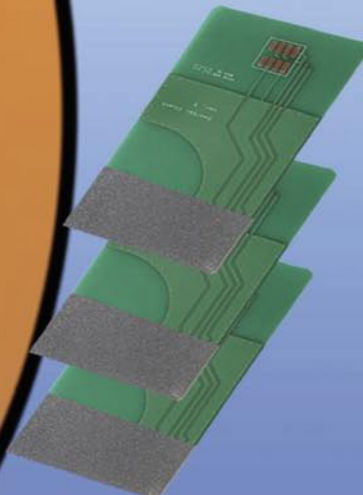
Wireless SmartWi.net Residential Cardsplitter

SmartWi is a wireless card splitter solution which can be used in household with more than one set top box.



Wireless SmartWi works on most common set top box for Satellite, Cable and Terrestrial systems

SmartWi split your subscription card and make it possible to watch different programs on each set top box with only one subscription card.



Wireless SmartWi come standard with
 1 Wireless SmartWi
 3 Wireless Smartwi client card
 1 Power adaptor for Smartwi master.

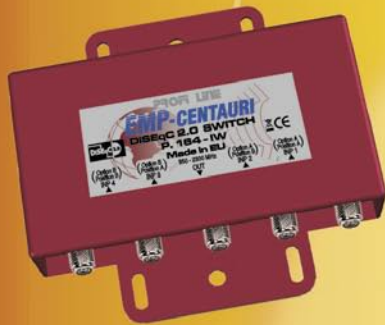


Contact information
<http://www.smartwi.net>
 E-Mail : info@smartwi.net

SmartWi Denmark
 Distribution Center
 Phone + 45 702 600 31

EMP-CENTAURI®

New line of weatherproof products



P.164-IW

4in/1out DiSEqC 2.0 switch in weatherproof housing for connection of up to 4 satellite positions to one receiver. The inputs of the switch are controlled from a receiver by "Position" and "Option" commands and are through for 22 kHz and DiSEqC signals, short-circuit protection is included.



P.168-W

9in/1out switch for direct connection of up to 8 SAT antennas to one receiver. The switch can be used practically with any type of DiSEqC receiver. Inputs are selected by DiSEqC 1.2 command "Goto nn" (6B), or by DiSEqC 1.1 command "Write N1" (39). Additional input for terrestrial antenna allows to combine satellite and terrestrial signals into one cable. The unit features weather-proof casing and short-circuit protection.



P.162-IW

2in/1out DiSEqC 2.0 switch in weatherproof housing for connection of 2 satellite positions to one receiver. The inputs of the switch are controlled from a receiver by "Position" command and are through for 22 kHz and DiSEqC signals, short-circuit protection is included.

Complete description of all models on

www.emp-centauri.cz

EMP-Centauri, s.r.o., Ulice 5. května 690, 339 01 KLATOVY 4, CZECH REPUBLIC, EU
phone: 00420-376-323 813, 00420-376-314 852, fax: 00420-376-323 809, 00420-376-314 367

接收实验。那篇报道在卫星接收圈子里产生了相当大的轰动。我们想要了解汤尼的近况,于是拜访了他在多伦多市郊的家。汤尼是1968年从意大利的阿布鲁齐来到加拿大的。他是做工程装置贸易的,而这给了他开始搞建筑的强烈愿望。他的卫星电视爱好始于他的一个有一个大天线朋友的家。“我真的特别喜欢所有体育节目的影像传送,而这在一般的电视广播中是无法看到的”,汤尼回忆说。他发现卫星影像传送使他能够

看到各种喜爱的运动赛事。1988年,他花了3700美元在他家的后院里竖起了一个3米天线。令人惊讶的是:“就是这个天线现在仍然在后院里!”它仍然像从前那样接收着他喜爱的影像传送。

而天控器几乎还是最初的那个。他的VonWeise天控器从18吋升级到了24吋。更大的天控器使他的接收范围从137°到20°W:“它让我能接收到52个卫星”,汤尼骄傲地解释说。他的另外两个120cm天线已经安装完毕,一个在他的

院中而另一个则在他的屋顶上,它们都用Stab HH120马达来驱动。用这些他接收的喜爱12.5°W的Telstar 12在15°W的大西洋鸟卫星。

汤尼这位三个小孩的父亲,是一个Fortec STAR的实测者。新的接收机经过他的实际测试以尽早发现缺点。“在软件的每一个功能都必须从头到尾检查以随时更新”,乐衷这一工作的汤尼解释说道。他正在准备测试即将上市的FortecStar 高清原型机。



汤尼使用带有CI的Fortec STAR典型机器进行盲扫,并用右边的接收机接收普通频道。



汤尼能用他的索尼电视机同时测试两个接收机的视频输入信号。在这个例子中他给我们展示的左边图像是来自Quali 高清接收机的PAL制信号。右边图像是来自功分器另一端Fortec STAR接收机的相同频道信号。这让他确定PAL制信号是否转换成NTSC制信号。

卫星 “爷爷”

伊瓦·卡特迈尔对于他的绰号非常自豪：“卫星爷爷”。他出生于赞比亚，那里以前属于罗德西亚的一个北方区域。他以自己的独特方法真的活到了名副其实于上面那个名字“卫星爷爷”，当然，他在卫星生意方面也累积了相当多的经验。

伊瓦，他学的是机械工程专业，担任过制动器装配生产线上的经理。在他退休之后，他热衷于接收卫星电视。起因是他在1994年收到的一个圣诞礼物。伊瓦解释说，“我的儿子把卫星接收系统当做一个礼物送给了我。”

当付费电视 DSTV 开始广播的一些年后，伊瓦开始了他的事业。1998年，他参与了通过 THAICOM 卫星传输<<3ABN>> 频道宗教第7日节目的合作。今天，伊瓦有10名安装人员并以较优惠的价格提供套站。“这些系统的80%是65cm天线套站，其余的是100cm的，”伊瓦解释说。

他每年销售500~600套系统，其中雇人安装有大约100套。伊瓦有个雄心壮志：“我的梦想是操作一个上行站。”当然，他拥有这样的房间。

伊瓦在他的小屋里，他以前在这里工作，不停测试新的接收机，在把他们卖给客户前预调好频道。



伊瓦在他自制的4.0米网状天线之前，那些孔洞非常小，以至于该天线完全可以接收Ku波段信号。他安装了驱动器，使其能够旋转将近180°！其他的天线包括三个极轴天线：2.2米、1.2米和0.60米天线。那开着“花”的C波段天线是对着78.5°E的THAICOM卫星，而Ku波段LNB对着68.5°E。





在约翰尼斯堡北方米德兰德的市郊，伊瓦的房子旁不仅有很多天线，而且还有小鸡和一个游泳池。

左边隐藏在树后的是另外三个 1 米天线，安装在靠近房子角落旁，分别对着 36°E （有多种选择）、 68.5°E （为基督徒频道）和 16°E （为毛里求斯和马达加斯加的法语频道）。



SatHawk 4000

Available at Sadoun Satellite Sales

Digital Satellite Signal Meter & Satellite Identifier



Features:

- 120 Satellites Memory
- C & KU Band Compatibility
- USB 2.0
- 3800 mAh Battery
- User Programmable
- Works with most LNBFs including DishPro Plus.
- Worldwide Compatibility
- Fast Satellite Identification



What is included in the box:

- SatHawk 4000 signal meter
- AC Wall Adapter
- DC Car Charger
- Carrying Case
- Operating Instructions

Dealers Wanted

This meter is programmable, user friendly and ideal for installation of digital satellite TV antennas. Works with DBS, DSS, most KU-band satellites, and C-band satellites.



SatHawk

Distributed in the USA by

Sadoun Satellite Sales

www.sathawk.tv or www.sadoun.com

1-888-519-9595 * 1-614-529-9560 * Fax 1-614-529-9570 * info@sadoun.com

TELE-satellite's Global Distribution

Online Readers **Arabic** Edition

Source: Google Analytics

Geographical Distribution of TELE-satellite Readership



Readership in descending order:

- Cairo
- Riyadh
- Rabat
- Alexandria
- Casablanca
- Giza
- Amman
- Algiers
- Dhahran
- Damascus
- Tunis
- Jiddah
- Kuwait
- Manama
- Khartoum
- Tripoli
- Sana
- Doha
- Vienna
- Masqat
- Ad Dammam
- Petah Tiqwa
- Herndon
- Beirut



TELE-satellite Arabic Edition
Grand Total Worldwide:
21777 Unique Readers

TELE-satellite Magazine is published in 16 languages and distributed all over the world. The map shows readership of Arabic edition of TELE-satellite Magazine.

TELE-satellite Worldwide Distributors Newsstands, Magazine and Bookshops

Europe

- Austria:** Pressegroßvertrieb Salzburg
- Belgium:** AMP
- Bulgaria:** Tel-Sat
- Estonia:** AS Lehepunkt
- Finland:** Rautakirja Oy Lehtipiste
- France:** Levant Distributors Sarl
- Germany:** IPS Pressevertrieb
- Greece:** Hellenic Distribution Agency
- Greece:** Evropi SA
- Ireland:** Eason & Son
- Luxembourg:** Messageries Paul Krauss
- Netherlands:** Betapress BV
- Sweden:** Svenska Interpress AB

Switzerland: Valora AG
Turkey: Dogan Burda Dergi
UK: Emblem Group

Middle East

- Bahrain:** Al-Hilal Publishing
- Israel:** Steimatzy
- Kuwait:** Kuwaiti Group for Publishing
- Lebanon:** Levant Group
- Oman:** Dar Al-Atta'a Est.
- Qatar:** Dar Al Sharq Printing
- Saudi Arabia:** Saudi Distribution
- UAE:** Emirates Printing & Publishing

Africa

- Botswana:** MCS Caxton
- Egypt:** Al Ahram
- Kenya:** Nation Media
- Namibia:** MCS Caxton
- Nigeria:** Newsstand Agencies
- South Africa:** MCS Caxton



TELE-satellite Magazine is available at the Eslite Media Shopping Center at Songgao Road, next to Trade World Center in Taipei, Taiwan

America

- Canada:** Disticor
- USA:** Prestige

Asia

- Australia:** Europress Distributors
- China:** Aluo-Sat
- India:** Sateesh Kumar P.C.
- Indonesia:** Indoprom
- Laos:** Infosat Intertrade
- Nepal:** Bazaar
- Pakistan:** Paradise Books & Distributors
- Taiwan:** Taiwan English Press
- Thailand:** Infosat Intertrade
- Vietnam:** XunhaSaba

If your country is not listed in TELE-satellite's Distributor List, you can go online and read TELE-satellite Magazine on the Internet in any of 16 currently available languages: www.TELE-satellite.com



MCS Caxton in Johannesburg/South Africa, distributes TELE-satellite Magazine in South Africa, Namibia, and Botswana. Butch Courtney (left) is MCS Managing Director, Alexander Wiese (center) Publisher, and Luisa Rebelo, MCS Account Manager for TELE-satellite Magazine.

Exhibition Preview

- **27 -29 September 2007: EEBC 2007**
The Leading Electronic Media & Communications Event in Eastern Europe
Exhibition Centre "KyivExpoPlaza", Kiev, Ukraine
www.eebc.net.ua



- **4 - 6 October 2007: SatExpo 2007**
Space and Advanced Telecommunications
Vicenza Fair Grounds, Vicenza, Italy
www.satexpo.it



- **9 - 13 October 2007: Taipei International Electronics Autumn Show**
Taipei World Trade Centre, 5, Hsin-Yi Road, Sec. 5, Taipei, Taiwan
www.taitronics.org/taipei/

- **22 - 25 November 2007: Broadcast Cable & Satellite eurasia**
11th International Trade Fair and Conference for Satellite Communication, Broadcasting and TV Content
İstanbul Expo Center, Yeşilköy, Istanbul, Turkey
www.cebit-bcs.com



- **4 -7 February 2008: CSTB**
Premier Professional Media Event in Russia
Crocus Expo, Moscow, Russia
www.cstb.ru

- **4 -6 March 2008: CABSAT 2008**
Electronic Media and Satellite Communications Event
Dubai International Convention and Exhibition Centre
www.cabsat.com

TELE-satellite International Magazine is published worldwide in 16 languages:



Subscription Coupon TELE-satellite English Edition

Aluo-sat Co., Ltd
PO Box 001-390
Shenzhen 518001
CHINA
Tel/Fax: +86-755-82173350

Subscription to TELE-satellite International English Edition includes the SatcoDX CD-ROM "World of Satellites".



Note: A one-year subscription includes six issues of TELE-satellite magazine plus the updated SatcoDX CD-ROM with each issue. The CD comes with the full version of SatcoDX's "World of Satellites" and includes the database update license.

SUBSCRIBE NOW

Name

Company

Address

City, ZIP

State

Tel

E-mail

Payment Credit Card Check Money Order

Card #

Exp. Date Security Number (see back of card)

Name on Card

Date

Signature



Opensat X9000 HDCI

- MPEG-2 & MPEG-4 High Definition support (H.264)
- 2 Common Interface and 1 Smart Card Reader
- Multi Video Outputs – HDMI, Component, RGB/HV, S-Video, Composite Video, Audio L/R
- Selectable Output for 1080i, 720p, 576p and 576i Format (Europe@50Hz)
- Dolby Digital(AC3) 5.1 Channel Surround Sound via Optical S/PDIF
- Aspect Ratio Adjustment 4:3(16/9 Crop), 4:3(16/9 Letter Box) and 16:9(4/3 Pillar Box)
- Multi-Lingual Teletext and Subtitle Support (VBI & OSD)
- Electronic Program Guide for On-Screen Channel Information
- User Friendly OSD Menu with Full Function
- Favorite Channel and Parental Lock Function
- Picture in Picture support(Aux input / optional)
- DiSEqC 1.0 and 1.2 support
- Installation by Easy Setup Guide

Ultimate dream collection...



Opensat X7000 CI

- 1 x Smart Card
- 2 x common interface
- 6000 channels programmable
- Powerful EPG with multiple-day information
- Easy installation for multiple satellites
- Zoom-in function

OPENSAT

www.opensat.info

RESYS
worldwide

www.resys-sat.com
e-mail: info@resys-sat.com



WATCH THE WORLD WITH JIUZHOU



DVB/ATSC DIGITAL STB SERIES CATV SERIES DISH ANTENNA SERIES LNB SERIES



JIUZHOU ELECTRIC GROUP

Headquarters: NO.16 Yuejin Road Mianyang,Sichuan,China
Shenzhen Branch: 17F,China Youse Building,6013 Shennan Avenue,Futian District,Shenzhen,China

Contact: Mr.Alex Deng
Tel: 86-816-2468774
Fax: 86-816-2468903
E-mail: overseas@jiuzhou.com.cn
Website: www.jiuzhou.com.cn



Dish Antenna

Digital Headend

Satellite Amplifier

